



## Catenin $\delta$ -1 (ANT0085R) Rabbit mAb

CatalogNo: ANT8235 **Recombinant** 

Formulation: PBS,50%glycerol,0.05%Proclin 300,0.05%BSA  
Quantity : 100 ug/vial

### Host Species

- Rabbit

### MW

- 108kD (Calculated)
- 108kD (Observed)

### Reactivity

- Human,Mouse,Rat,

### Isotype

- IgG,Kappa

### Applications

- WB,IHC,IF,IP,ELISA

## Recommended Dilution Ratios

IHC 1:200-1:1000

WB 1:1000-1:5000

IF 1:200-1:1000

ELISA 1:5000-1:20000

IP 1:50-1:200

## Storage

**Storage\*** -15°C to -25°C/1 year(Do not lower than -25°C)

## Basic Information

**Clonality** Monoclonal

**Clone Number** ANT0085R

## Target Information

Endogenous

**Gene name** CTNND1 KIAA0384

**Protein Name** Cadherin associated Src substrate;Cadherin-associated Src substrate;CAS;Catenin (cadherin associated protein) delta 1;Catenin delta 1;Catenin delta;Catenin delta-1;CTND1\_HUMAN;CTNND 1;CTNND;CTNND1;delta 1 Catenin;KIAA0384;p120;P120 CAS;p120 catenin;P120 CTN;p120(cas);p120(ctn);P120CAS;P120CTN

Organism	Gene ID	UniProt ID
Human	<a href="#">1500</a> ;	<a href="#">O60716</a> ;
Mouse		<a href="#">P30999</a> ;

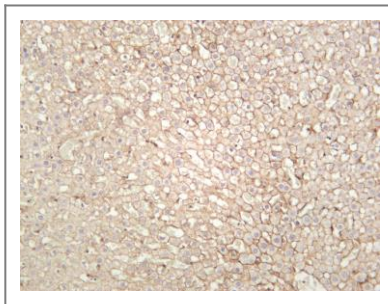
**Cellular** Membrane

**Localization**

**Tissue specificity** Breast/ Tonsil

**Function** Alternative products:Experimental confirmation may be lacking for some isoforms,Disease:May contribute to cell malignancy. Complete loss of expression was observed in approximately 10% of invasive ductal breast carcinomas investigated.,Domain:A possible nuclear localization signal exists in all isoforms where Asp-626--631-Arg are deleted.,Function:Binds to and inhibits the transcriptional repressor ZBTB33, which may lead to activation of target genes of the Wnt signaling pathway (By similarity). May associate with and regulate the cell adhesion properties of both C- and E-cadherins. Implicated both in cell transformation by SRC and in ligand-induced receptor signaling through the EGF, PDGF, CSF-1 and ERBB2 receptors. Promotes GLIS2 C-terminal cleavage.,induction:Induced in vascular endothelium by wounding. This effect is potentiated by prior laminar shear stress, which enhances wound closure.,ANTM:Phosphorylated.,similarity:Belongs to the beta-catenin family.,similarity:Contains 10 ARM repeats.,subcellular location:Interaction with GLIS2 promotes nuclear translocation.,subunit:Belongs to a multiprotein cell-cell adhesion complex that also contains E-cadherin, alpha-catenin, beta-catenin, and gamma-catenin. Binds to the C-terminal fragment of PSEN1 and mutually competes for E-cadherin. Interacts with ZBTB33. Interacts with GLIS2.,tissue specificity:Expressed in vascular endothelium.,

## Validation Data

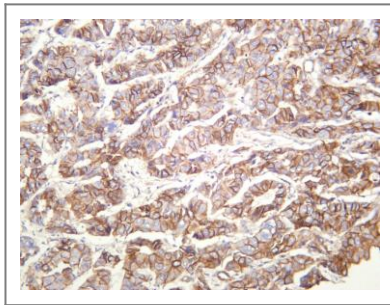
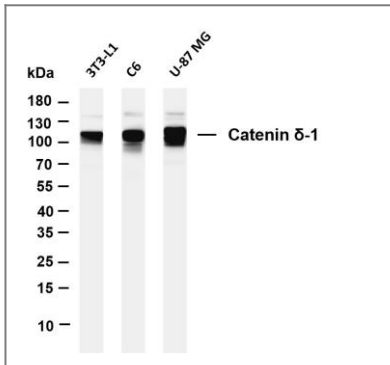


Rat liver was stained with anti-Catenin  $\delta$ -1 (ANT0085R)

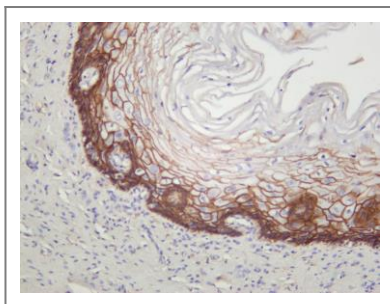
rabbit antibody

Various whole cell lysates were separated by 4-20% SDS-PAGE, and the membrane was blotted with anti-Catenin  $\delta$ -1 (ANT0085R) antibody. The HRPconjugated Goat anti-Rabbit IgG(H + L) antibody was used to detect the antibody. Lane 1: 3T3-L1 Lane 2: C6 Lane 3: U-87 MG Predicted band size:

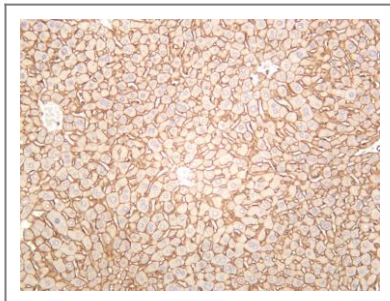
108kDa Observed band size: 108kDa



Human cervical squamous carcinoma was stained with anti-Catenin  $\delta$ -1 (ANT0085R) rabbit antibody



Human hepatocellular carcinoma was stained with anti-Catenin  $\delta$ -1 (ANT0085R) rabbit antibody



Mouse liver was stained with anti-Catenin  $\delta$ -1 (ANT0085R) rabbit antibody

For Research use only, not for diagnostics and clinical use  
Contact Antagene Inc Tel 1-866-964-2589 Email: [info@antageneinc.com](mailto:info@antageneinc.com)