



FTO (ANT0083R) Rabbit mAb

CatalogNo: ANT8233 **Recombinant R**

Formulation: PBS,50%glycerol,0.05%Proclin 300,0.05%BSA
Quantity : 100 ug/vial

Host Species

- Rabbit
- Human,Mouse,Rat,

Reactivity

- WB,IHC,IF,IP,ELISA

Applications

MW

- 58kD (Calculated)
 - IgG,Kappa
- 58kD (Observed)

Isotype

Recommended Dilution Ratios

IHC 1:3000-1:20000

WB 1:1000-1:5000

IF 1:200-1:1000

ELISA 1:5000-1:20000

IP 1:50-1:200

Storage

Storage* -15°C to -25°C/1 year(Do not lower than -25°C)

Basic Information

Clonality Monoclonal

Clone Number ANT0083R

Target Information

Endogenous

Gene name FTO
Protein Name Alpha-ketoglutarate-dependent dioxygenase FTO

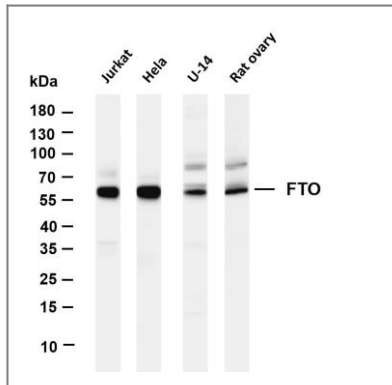
Organism	Gene ID	UniProt ID
Human	79068 ;	Q9C0B1 ;
Mouse	26383 ;	Q8BGW1 ;
Rat	291905 ;	Q2A121 ;

Cellular Localization Cytoplasm, Nucleus

Tissue specificity Ubiquitously expressed, with relatively high expression in adrenal glands and brain; especially in hypothalamus and pituitary (PubMed:17434869, PubMed:17496892). Highly expressed in highly expressed in acute myeloid leukemias (AML) with t(11;11)(q23;23) with KMT2A/MLL1 rearrangements, t(15;17)(q21;q21)/PML-RARA, FLT3-ITD, and/or NPM1 mutations (PubMed:28017614).

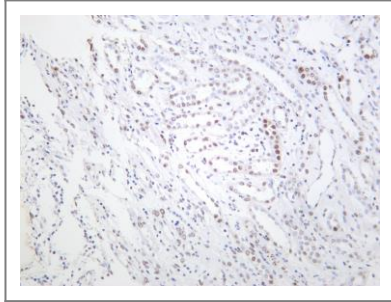
Function: The precise function of this protein remains to be determined., polymorphism: At least one intronic variation within the gene predisposes to childhood and adult obesity., similarity: Belongs to the fto family., tissue specificity: Ubiquitously expressed, with relatively high expression in adrenal glands and brain; especially in hypothalamus and pituitary.,

Validation Data



Various whole cell lysates were separated by 4-20% SDS-PAGE, and the membrane was blotted with anti- FTO (ANT0083R) antibody. The HRPconjugated Goat anti-Rabbit IgG(H + L) antibody was used to detect the antibody. Lane 1: Jurkat Lane 2: HeLa Lane 3: U-14 Lane 4: Rat ovary
Predicted band size: 58kDa Observed band size: 58kDa

Human kidney was stained with anti-FTO (ANT0083R) rabbit antibody



For Research use only, not for diagnostics and clinical use
Contact Antagene Inc Tel 1-866-964-2589 Email: info@antageneinc.com