



Mouse Monoclonal Antibody **Cyclin A2** conjugated to Sepharose Beads

CatalogNo: **ANT8232-S**

Size 200ul

Storage Store at 4 °C for frequent use

Description

This Antagene antibody is immobilized via covalent binding of primary amino groups to N-hydroxysuccinimide (NHS)-activated sepharose beads. It is useful for immunoprecipitation assays.

Cyclin A2 (ANT0082R) Rabbit mAb

Formulation: 50% slurry in PBS pH 7.2 with 0.01mg NaN₃ preservative.

Host Species

- Rabbit
- Human, Mouse, Rat,

Reactivity

- WB, IHC, IF, IP, ELISA

Applications

MW

- 49kD (Calculated)
 - IgG, Kappa
- 49kD (Observed)

Isotype

Recommended Dilution Ratios

IP

Basic Information

Clonality

Monoclonal

Clone Number ANT0082R

Immunogen Information

Specificity Endogenous

Gene name CCNA2 CCN1 CCNA

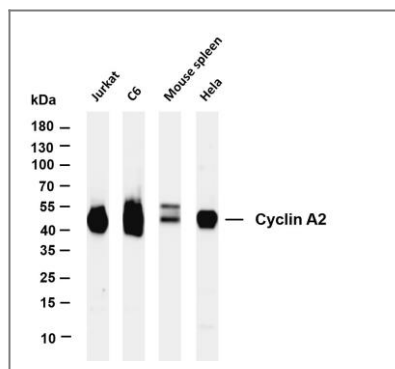
Protein Name Cyclin-A2 (Cyclin-A)

Organism	Gene ID	UniProt ID
Human	890 ;	P20248 ;
Mouse	12428 ;	P51943 ;

Cellular Localization Cytoplasm, Nucleus

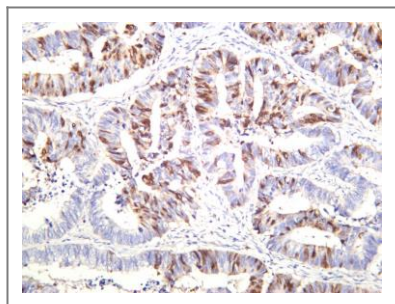
Function Cyclin which controls both the G1/S and the G2/M transition phases of the cell cycle. Functions through the formation of specific serine/threonine protein kinase holoenzyme complexes with the cyclin-dependent protein kinases CDK1 or CDK2. The cyclin subunit confers the substrate specificity of these complexes and differentially interacts with and activates CDK1 and CDK2 throughout the cell cycle.

Validation Data

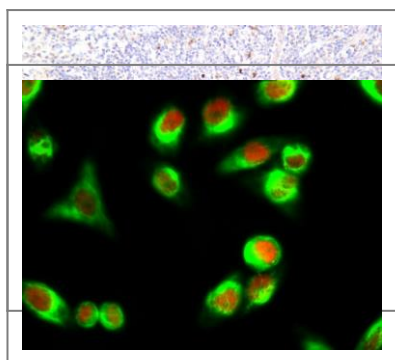


Various whole cell lysates were separated by 4-20% SDS-PAGE, and the membrane was blotted with anti-Cyclin A2 (ANT0082R) antibody. The HRPconjugated Goat anti-Rabbit IgG(H + L) antibody was used to detect the antibody. Lane 1: Jurkat Lane 2: C6 Lane 3: Mouse spleen Lane 4: HeLa
Predicted band size: 49kDa Observed band size: 49kDa

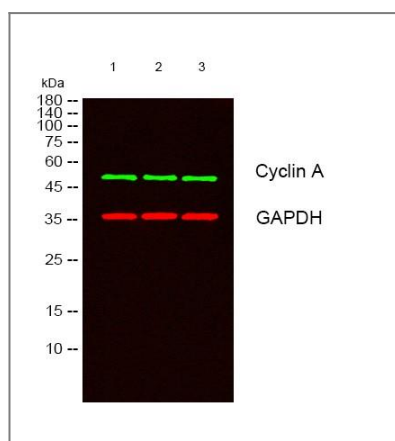
Human colon carcinoma was stained with anti-Cyclin A2 (ANT0082R) rabbit antibody



Human tonsil was stained with anti-Cyclin A2 (ANT0082R) rabbit antibody



Immunofluorescence analysis of HeLa cell. 1, Cyclin A Antibody (red) was diluted at 1:200 (4° overnight). β-actin Monoclonal Antibody (5B7) (green) was diluted at 1:200 (4° overnight). 2, Goat Anti Rabbit Alexa Fluor 594 Catalog: RS3611 was diluted at 1:1000 (room temperature, 50min). Goat Anti Mouse Alexa Fluor 488 Catalog: RS3208 was diluted at 1:1000 (room temperature, 50min).



Western blot analysis of lysates from 1) 3T3, 2) Jurkat, 3) K562 cells, (Green) primary antibody was diluted at 1:1000, 4° over night, secondary antibody (cat: RS23920) was diluted at 1:10000, 37° 1hour. (Red) GAPDH Monoclonal Antibody (2B8) (cat: YM3029) antibody was diluted at 1:5000 as loading control, 4° over night, secondary antibody (cat: RS23710) was diluted at 1:10000, 37° 1hour.

For Research use only, not for diagnostics and clinical use
Contact Antagene Inc Tel 1-866-964-2589 Email: info@antageneinc.com