

RPA32/RPA2 (ANT0080R) Rabbit mAb

CatalogNo: ANT8230 **Recombinant** 

Formulation: PBS,50%glycerol,0.05%Proclin 300,0.05%BSA
Quantity : 100 ug/vial

Host Species

- Rabbit
- Human,Mouse,Rat,

Reactivity

- WB,IHC,IF,IP,ELISA

Applications

MW

- 29kD (Calculated)
- 29kD (Observed)

Isotype

- IgG,Kappa

Recommended Dilution Ratios

IHC 1:1000-1:4000

WB 1:1000-1:5000

IF 1:200-1:1000

ELISA 1:5000-1:20000

IP 1:50-1:200,

Storage

Storage* -15°C to -25°C/1 year(Do not lower than -25°C)

Basic Information

Clonality Monoclonal

Clone Number ANT0080R

Target Information

Endogenous

Gene name

RPA2

Protein Name

Replication protein A 32 kDa subunit

Organism	Gene ID	UniProt ID
Human	6118;	P15927;
Mouse		Q62193;
Rat	59102;	Q63528;

Cellular

Nucleus

Localization

Tissue specificity

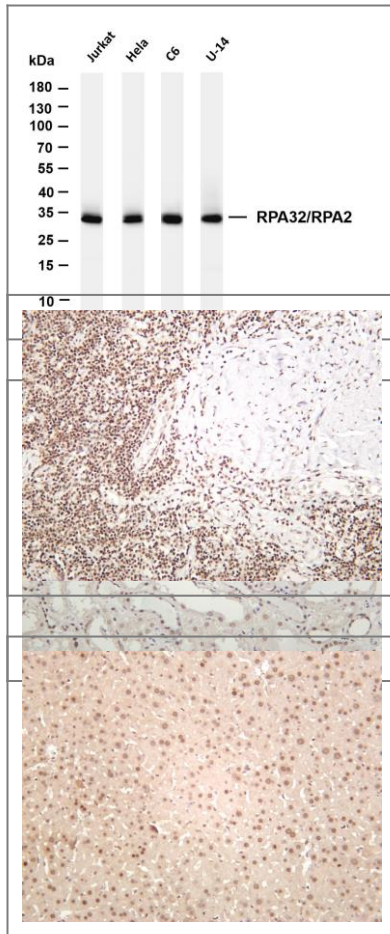
Kidney,Lung,Muscle,

Function

Function:Required for DNA recombination, repair and replication. The activity of RP-A is mediated by single-stranded DNA binding and protein interactions.,ANTM:Phosphorylated in a cell-cycle-dependent manner (from the S phase until mitosis). Phosphorylated by ATR upon DNA damage, which promotes its translocation to nuclear foci. Can be phosphorylated in vitro by PRKDC/DNA-PK in the presence of Ku and DNA, and by CDC2.,subcellular location:Also present in PML nuclear bodies. Redistributes to discrete nuclear foci upon DNA damage.,subunit:Heterotrimer of 70, 32 and 14 kDa chains. The DNA-binding activity may reside exclusively on the 70 kDa subunit. Binds to SERTAD3/RBT1. Interacts with TIPIN.,



Validation Data



Various whole cell lysates were separated by 4-20% SDS-PAGE, and the membrane was blotted with anti-RPA32/RPA2 (ANT0080R) antibody. The HRPconjugated Goat anti-Rabbit IgG(H + L) antibody was used to detect the antibody. Lane 1: Jurkat Lane 2: HeLa Lane 3: C6 Lane 4: U-14 Predicted band size: 29kDa Observed band size: 29kDa

Human kidney was stained with anti-RPA32/RPA2 (ANT0080R) rabbit antibody
Human tonsil was stained with anti-RPA32/RPA2 (ANT0080R) rabbit antibody

Mouse liver was stained with anti-RPA32/RPA2 (ANT0080R) rabbit antibody

Rat liver was stained with anti-RPA32/RPA2 (ANT0080R) rabbit antibody

For Research use only, not for diagnostics and clinical use
Contact Antagene Inc Tel 1-866-964-2589 Email: info@antageneinc.com