



Mouse Monoclonal Antibody **RPA32/RPA2** conjugated to Sepharose Beads

CatalogNo: **ANT8230-S**

Size 200ul

Storage Store at 4 °C for frequent use

Description

This Antagene antibody is immobilized via covalent binding of primary amino groups to N-hydroxysuccinimide (NHS)-activated sepharose beads. It is useful for immunoprecipitation assays.

RPA32/RPA2 (ANT0080R) Rabbit mAb

Formulation: 50% slurry in PBS pH 7.2 with 0.01mg NaN₃ preservative.

Host Species

- Rabbit
- Human, Mouse, Rat,

Reactivity

- WB, IHC, IF, IP, ELISA

Applications

MW

- 29kD (Calculated)
- 29kD (Observed)
- IgG, Kappa

Isotype

Recommended Dilution Ratios

IP

Basic Information

Clonality

Monoclonal

Clone Number ANT0080R

Immunogen Information

Specificity Endogenous

Gene name RPA2

Protein Name Replication protein A 32 kDa subunit

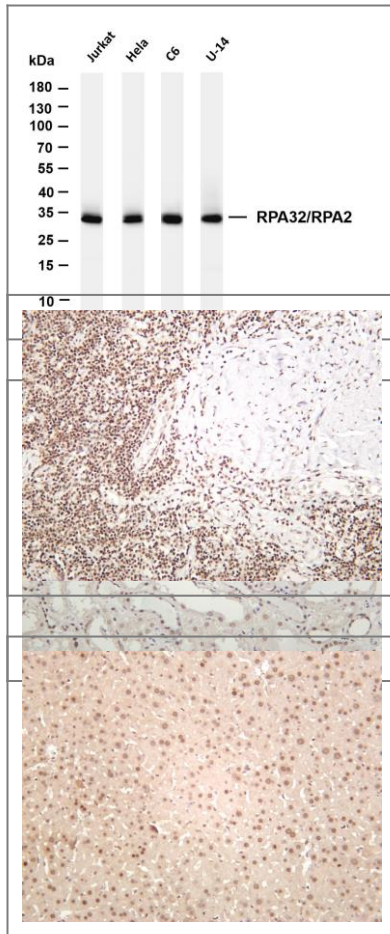
| Organism | Gene ID | UniProt ID |
|----------|------------------------|-------------------------|
| Human | 6118; | P15927; |
| Mouse | | Q62193; |
| Rat | 59102; | Q63528; |

Cellular Localization Nucleus

Tissue specificity Kidney,Lung,Muscle,

Function Function:Required for DNA recombination, repair and replication. The activity of RP-A is mediated by single-stranded DNA binding and protein interactions.,ANTM:Phosphorylated in a cell-cycle-dependent manner (from the S phase until mitosis). Phosphorylated by ATR upon DNA damage, which promotes its translocation to nuclear foci. Can be phosphorylated in vitro by PRKDC/DNA-PK in the presence of Ku and DNA, and by CDC2.,subcellular location:Also present in PML nuclear bodies. Redistributes to discrete nuclear foci upon DNA damage.,subunit:Heterotrimer of 70, 32 and 14 kDa chains. The DNA-binding activity may reside exclusively on the 70 kDa subunit. Binds to SERTAD3/RBT1. Interacts with TIPIN.,

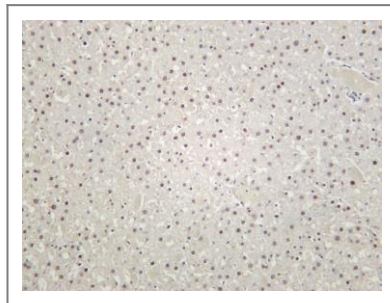
Validation Data



Various whole cell lysates were separated by 4-20% SDS-PAGE, and the membrane was blotted with anti-RPA32/RPA2 (ANT0080R) antibody. The HRPconjugated Goat anti-Rabbit IgG(H + L) antibody was used to detect the antibody. Lane 1: Jurkat Lane 2: HeLa Lane 3: C6 Lane 4: U-14 Predicted band size: 29kDa Observed band size: 29kDa

Human kidney was stained with anti-RPA32/RPA2 (ANT0080R) rabbit antibody
Human tonsil was stained with anti-RPA32/RPA2 (ANT0080R) rabbit antibody

Mouse liver was stained with anti-RPA32/RPA2 (ANT0080R) rabbit antibody



Rat liver was stained with anti-RPA32/RPA2 (ANT0080R) rabbit antibody

For Research use only, not for diagnostics and clinical use
Contact Antagene Inc Tel 1-866-964-2589 Email: info@antageneinc.com