



Mouse Monoclonal Antibody **RPA32/RPA2** conjugated to Sepharose Beads

CatalogNo: **ANT8230-M**

Size 200ul

Storage Store at 4 °C for frequent use

### Description

This Antagene antibody is immobilized by the covalent reaction of hydrazinonicotinamide-modified antibody with formylbenzamide-modified beads. It is useful for immunoprecipitation.

**RPA32/RPA2 (ANT0080R) Rabbit mAb**

Formulation: Each vial contains 1mg/ml Magnetic Bead in PBS, pH 7.2, 0.05mg ANaN3.

### Host Species

- Rabbit
- Human, Mouse, Rat,

### Reactivity

- WB, IHC, IF, IP, ELISA

### Applications

### MW

- 29kD (Calculated)
- 29kD (Observed)
- IgG, Kappa

### Isotype

## Recommended Dilution Ratios

### IP

## Basic Information

### Clonality

Monoclonal

Clone Number      ANT0080R

**Immunogen Information**

**Specificity**      Endogenous

**Gene name**      RPA2

**Protein Name**      Replication protein A 32 kDa subunit

Organism	Gene ID	UniProt ID
Human	<a href="#">6118;</a>	<a href="#">P15927;</a>
Mouse		<a href="#">Q62193;</a>
Rat	<a href="#">59102;</a>	<a href="#">Q63528;</a>

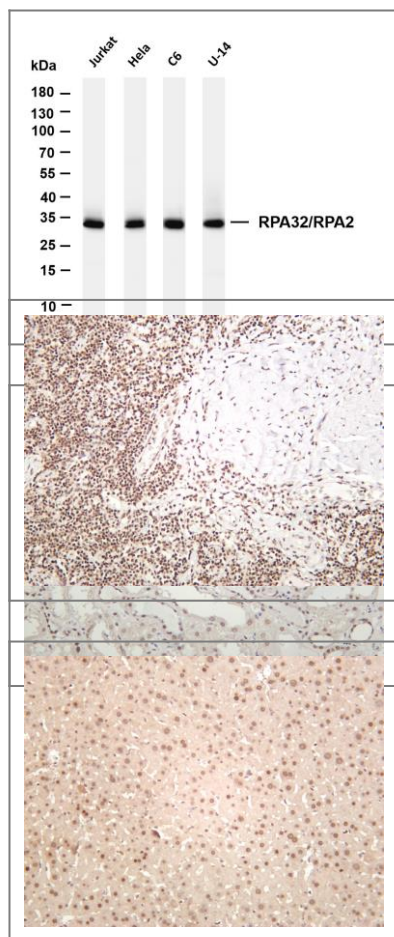
**Cellular Localization**      Nucleus

**Tissue specificity** Kidney,Lung,Muscle,

**Function**      Function:Required for DNA recombination, repair and replication. The activity of RP-A is mediated by single-stranded DNA binding and protein interactions.,ANTM:Phosphorylated in a cell-cycle-dependent manner (from the S phase until mitosis). Phosphorylated by ATR upon DNA damage, which promotes its translocation to nuclear foci. Can be phosphorylated in vitro by PRKDC/DNA-PK in the presence of Ku and DNA, and by CDC2.,subcellular location:Also present in PML nuclear bodies. Redistributes to discrete nuclear foci upon DNA damage.,subunit:Heterotrimer of 70, 32 and 14 kDa chains. The DNA-binding activity may reside exclusively on the 70 kDa subunit. Binds to SERTAD3/RBT1. Interacts with TIPIN.,



## Validation Data



Various whole cell lysates were separated by 4-20% SDS-PAGE, and the membrane was blotted with anti-RPA32/RPA2 (ANT0080R) antibody. The HRPconjugated Goat anti-Rabbit IgG(H + L) antibody was used to detect the antibody. Lane 1: Jurkat Lane 2: HeLa Lane 3: C6 Lane 4: U-14 Predicted band size: 29kDa Observed band size: 29kDa

Human kidney was stained with anti-RPA32/RPA2 (ANT0080R) rabbit antibody  
Human tonsil was stained with anti-RPA32/RPA2 (ANT0080R) rabbit antibody

Mouse liver was stained with anti-RPA32/RPA2 (ANT0080R) rabbit antibody

Rat liver was stained with anti-RPA32/RPA2 (ANT0080R) rabbit antibody

For Research use only, not for diagnostics and clinical use  
Contact Antagene Inc Tel 1-866-964-2589 Email: [info@antageneinc.com](mailto:info@antageneinc.com)