



HLA-DR (ANT0077R) Rabbit mAb

CatalogNo: ANT8228 **Recombinant R**

Formulation: PBS,50%glycerol,0.05%Proclin 300,0.05%BSA
Quantity : 100 ug/vial

Host Species

- Rabbit
- Human,Mouse,Rat,

Reactivity

- WB,IHC,IF,IP,ELISA

Applications

MW

- 29kD (Calculated)
- 37kD (Observed)

Isotype

- IgG,Kappa

Recommended Dilution Ratios

IHC 1:1000-1:4000

WB 1:1000-1:5000

IF 1:200-1:1000

ELISA 1:5000-1:20000

IP 1:50-1:200,

Storage

Storage* -15°C to -25°C/1 year(Do not lower than -25°C)

Basic Information

Clonality Monoclonal

Clone Number ANT0077R

Target Information

Endogenous

Gene name HLA-DRA HLA-DRA1
Protein Name HLA class II histocompatibility antigen, DR alpha chain (MHC class II antigen DRA)

Organism	Gene ID	UniProt ID
Human	3122 ;	P01903 ;

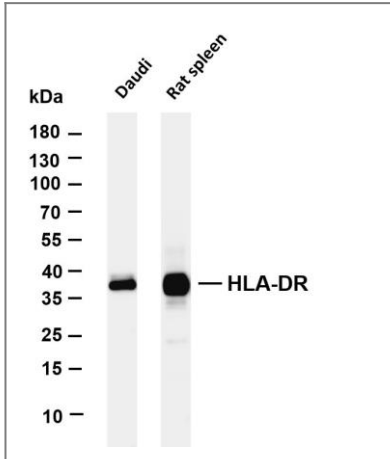
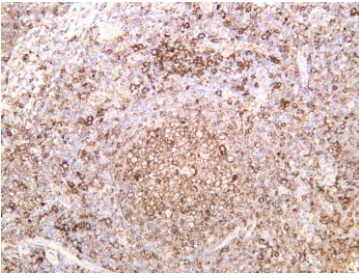
Cellular Localization Membrane

Tissue specificity Expressed in professional APCs: macrophages, dendritic cells and B cells (at protein level) (PubMed:31495665, PubMed:15322540, PubMed:23783831). Expressed in thymic epithelial cells (at protein level) (PubMed:23783831).

Function Disease:Genetic variations in HLA-DRA are associated with susceptibility to hepatitis B virus infection (HBV infection) [MIM:610424]. Approximately one third of all cases of cirrhosis and half of all cases of hepatocellular carcinoma can be attributed to chronic HBV infection. HBV infection may result in subclinical or asymptomatic infection, acute self-limited hepatitis, or fulminant hepatitis requiring liver transplantation.,polymorphism:The following alleles of DRA are known: DRA*0101 and DRA*0102. The sequence shown is that of DRA*0101.,similarity:Belongs to the MHC class II family.,similarity:Contains 1 Ig-like C1-type (immunoglobulin-like) domain.,subunit:Heterodimer of an alpha chain and a beta chain.,

Validation Data

Human tonsil was stained with anti-HLA-DR (ANT0077R) rabbit antibody



Various whole cell lysates were separated by 4-20% SDS-PAGE, and the membrane was blotted with anti-HLA-DR (ANT0077R) antibody. The HRPconjugated Goat anti-Rabbit IgG(H + L) antibody was used to detect the antibody. Lane 1: Daudi Lane 2: Rat spleen
Predicted band size: 29kDa Observed band size: 37kDa

For Research use only, not for diagnostics and clinical use
Contact Antagene Inc Tel 1-866-964-2589 Email: info@antageneinc.com