



Mouse Monoclonal Antibody **HLA-DR** conjugated to Sepharose Beads

CatalogNo: **ANT8228-M**

Size 200ul

Storage Store at 4 °C for frequent use

#### Description

This Antagene antibody is immobilized by the covalent reaction of hydrazinonicotinamide-modified antibody with formylbenzamide-modified beads. It is useful for immunoprecipitation.

**HLA-DR (ANT0077R) Rabbit mAb**

Formulation: Each vial contains 1mg/ml Magnetic Bead in PBS, pH 7.2, 0.05mg ANaN3.

#### Host Species

- Rabbit
- Human, Mouse, Rat,

#### Reactivity

- WB, IHC, IF, IP, ELISA

#### Applications

#### MW

- 29kD (Calculated)
- 37kD (Observed)
- IgG, Kappa

#### Isotype

## Recommended Dilution Ratios

### IP

## Basic Information

#### Clonality

Monoclonal

Clone Number      ANT0077R

**Immunogen Information**

**Specificity**      Endogenous

**Gene name**      HLA-DRA HLA-DRA1

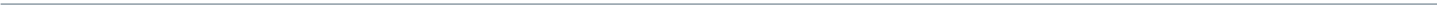
**Protein Name**      HLA class II histocompatibility antigen, DR alpha chain (MHC class II antigen DRA)

Organism	Gene ID	UniProt ID
Human	<a href="#">3122</a> ;	<a href="#">P01903</a> ;

**Cellular  
Localization**      Membrane

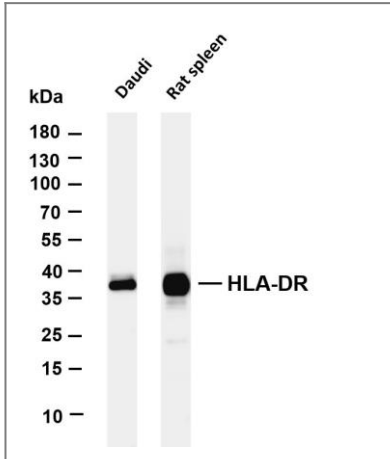
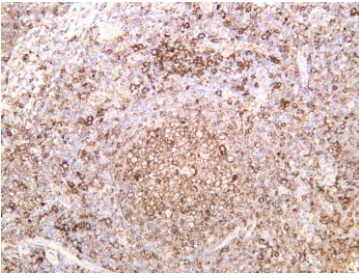
**Tissue specificity** Expressed in professional APCs: macrophages, dendritic cells and B cells (at protein level) (PubMed:31495665, PubMed:15322540, PubMed:23783831). Expressed in thymic epithelial cells (at protein level) (PubMed:23783831).

**Function**      Disease:Genetic variations in HLA-DRA are associated with susceptibility to hepatitis B virus infection (HBV infection) [MIM:610424]. Approximately one third of all cases of cirrhosis and half of all cases of hepatocellular carcinoma can be attributed to chronic HBV infection. HBV infection may result in subclinical or asymptomatic infection, acute self-limited hepatitis, or fulminant hepatitis requiring liver transplantation.,polymorphism:The following alleles of DRA are known: DRA\*0101 and DRA\*0102. The sequence shown is that of DRA\*0101.,similarity:Belongs to the MHC class II family.,similarity:Contains 1 Ig-like C1-type (immunoglobulin-like) domain.,subunit:Heterodimer of an alpha chain and a beta chain.,



## Validation Data

Human tonsil was stained with anti-HLA-DR (ANT0077R) rabbit antibody



Various whole cell lysates were separated by 4-20% SDS-PAGE, and the membrane was blotted with anti-HLA-DR (ANT0077R) antibody. The HRPconjugated Goat anti-Rabbit IgG(H + L) antibody was used to detect the antibody. Lane 1: Daudi Lane 2: Rat spleen  
Predicted band size: 29kDa Observed band size: 37kDa

For Research use only, not for diagnostics and clinical use  
Contact Antagene Inc Tel 1-866-964-2589 Email: [info@antageneinc.com](mailto:info@antageneinc.com)