



Mouse Monoclonal Antibody **Cytokeratin 7** conjugated to Sepharose Beads

CatalogNo: **ANT8226-S**

Size 200ul

Storage Store at 4 °C for frequent use

### Description

This Antagene antibody is immobilized via covalent binding of primary amino groups to N-hydroxysuccinimide (NHS)-activated sepharose beads. It is useful for immunoprecipitation assays.

### Cytokeratin 7 (ANT0075R) Rabbit mAb

Formulation: 50% slurry in PBS pH 7.2 with 0.01mg NaN<sub>3</sub> preservative.

#### Host Species

- Rabbit
- Human, Mouse, Rat,

#### Reactivity

- WB, IHC, IF, IP, ELISA

#### Applications

#### MW

- 51kD (Calculated)
- 55kD (Observed)

#### Isotype

- IgG, Kappa

## Recommended Dilution Ratios

### IP

## Basic Information

#### Clonality

Monoclonal

Clone Number      ANT0075R

Immunogen Information

Specificity      Endogenous

Gene name      KRT7 SCL

Protein Name      CK 7;CK-7;CK7;Cytokeratin 7;Cytokeratin-7;D15Wsu77e;K2C7;K2C7\_HUMAN;K7;Keratin 7;Keratin 7, type II;Keratin type II cytoskeletal 7;Keratin, 55K type II cytoskeletal;Keratin, simple epithelial;Keratin, simple epithelial type I, K7;Keratin, type II cytoskeletal 7;Keratin-7;Krt2-7;KRT7;MGC11625;MGC129731;MGC3625;Sarcolectin;SCL;Type II mesothelial keratin K7;Type-II keratin Kb7

Organism	Gene ID	UniProt ID
Human	<a href="#">3855;</a>	<a href="#">P08729;</a>
Mouse	<a href="#">110310;</a>	<a href="#">Q9DCV7;</a>
Rat	<a href="#">300242;</a>	<a href="#">Q6IG12;</a>

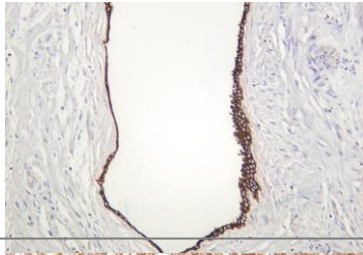
Cellular Localization      Cytoplasm

Tissue specificity      Pancreas

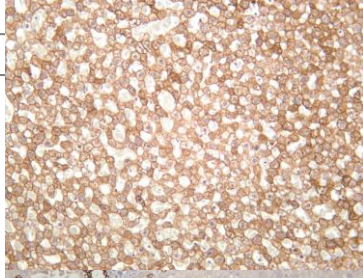
Function      Function:Blocks interferon-dependent interphase and stimulates DNA synthesis in cells. Involved in the translational regulation of the human papillomavirus type 16 E7 mRNA (HPV16 E7).,induction:Up-regulated by retinoic acid.,mass spectrometry: PubMed:11840567,miscellaneous:There are two types of cytoskeletal and microfibrillar keratin: I (acidic; 40-55 kDa) and II (neutral to basic; 56-70 kDa).,ANTM:Arg-20 is dimethylated, probably to asymmetric dimethylarginine.,similarity:Belongs to the intermediate filament family.,subunit:Heterotetramer of two type I and two type II keratins. Interacts with eukaryotic translation initiator factor 3 (eIF3) subunit EIF3S10 and with HPV16 E7.,tissue specificity:Expressed in cultured epidermal, bronchial and mesothelial cells but absent in colon, ectocervix and liver. Observed throughout the glandular cells in the junction between stomach and esophagus but is absent in the esophagus.,

## Validation Data

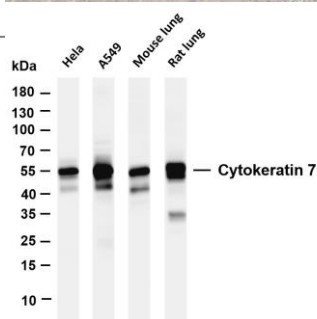
Human prostate was stained with anti-Cytokeratin 7 (ANT0075R) rabbit antibody



Mouse liver was stained with anti-Cytokeratin 7 (ANT0075R) rabbit antibody



Rat liver was stained with anti-Cytokeratin 7 (ANT0075R) rabbit antibody



Various whole cell lysates were separated by 4-20% SDS-PAGE, and the membrane was blotted with anti-Cytokeratin 7 (ANT0075R) antibody. The HRPconjugated Goat anti-Rabbit IgG(H + L) antibody was used to detect the antibody. Lane 1: HeLa Lane 2: A549 Lane 3: Mouse lung Lane 4: Rat lung Predicted band size: 51kDa Observed band size: 55kDa

For Research use only, not for diagnostics and clinical use  
Contact Antagene Inc Tel 1-866-964-2589 Email: [info@antageneinc.com](mailto:info@antageneinc.com)