

## GSK3 $\alpha$ (ANT0074R) Rabbit mAb

CatalogNo: ANT8225 **Recombinant** 

Formulation: PBS,50%glycerol,0.05%Proclin 300,0.05%BSA  
Quantity : 100 ug/vial

### Host Species

- Rabbit
- Human,Mouse,Rat,

### Reactivity

- WB,IHC,IF,IP,ELISA

### Applications

### MW

- 51kD (Calculated)
  - IgG,Kappa
- 51kD (Observed)

### Isotype

## Recommended Dilution Ratios

IHC 1:200-1:1000

WB 1:1000-1:5000

IF 1:200-1:1000

ELISA 1:5000-1:20000

IP 1:50-1:200,

## Storage

**Storage\*** -15°C to -25°C/1 year(Do not lower than -25°C)

## Basic Information

**Clonality** Monoclonal

**Clone Number** ANT0074R

Endogenous

Target Information

Gene name

GSK3A

Protein Name

Glycogen synthase kinase-3 alpha

Organism	Gene ID	UniProt ID
Human	<a href="#">2931</a> ;	<a href="#">P49840</a> ;
Mouse	<a href="#">606496</a> ;	<a href="#">Q2NL51</a> ;
Rat	<a href="#">50686</a> ;	<a href="#">P18265</a> ;

Cellular  
Localization

Cytoplasm

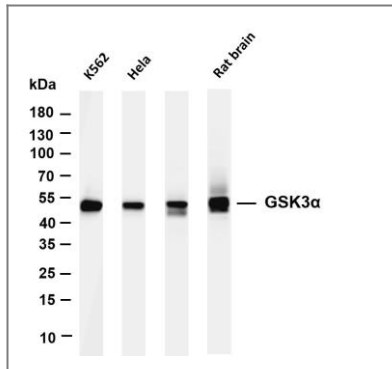
Tissue specificity

Brain, Eye, Foreskin, Lung, Pancreas, Platelet, Testis,

Function

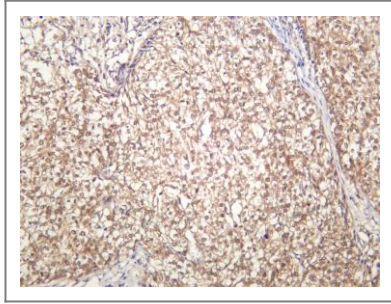
Catalytic activity:ATP + [tau protein] = ADP + [tau protein] phosphate.,Function:Implicated in the hormonal control of several regulatory proteins including glycogen synthase, MYB and the transcription factor JUN.,similarity:Belongs to the protein kinase superfamily.,similarity:Belongs to the protein kinase superfamily. CMGC Ser/Thr protein kinase family. GSK-3 subfamily.,similarity:Contains 1 protein kinase domain.,subunit:Monomer,

## Validation Data



Various whole cell lysates were separated by 4-20% SDS-PAGE, and the membrane was blotted with anti-GSK3 $\alpha$  (ANT0074R) antibody. The HRPconjugated Goat anti-Rabbit IgG(H + L) antibody was used to detect the antibody. Lane 1: K562 Lane 2: HeLa Lane 3: Mouse brain Lane 4: Rat brain  
Predicted band size: 51kDa Observed band size: 51kDa

Human breast carcinoma was stained with anti-GSK3 $\alpha$  (ANT0074R) rabbit antibody



---

For Research use only, not for diagnostics and clinical use  
Contact Antagene Inc Tel 1-866-964-2589 Email: [info@antageneinc.com](mailto:info@antageneinc.com)