



Mouse Monoclonal Antibody **GSK3 α** conjugated to Sepharose Beads

CatalogNo: **ANT8225-S**

Size 200ul

Storage Store at 4 °C for frequent use

Description

This Antagene antibody is immobilized via covalent binding of primary amino groups to N-hydroxysuccinimide (NHS)-activated sepharose beads. It is useful for immunoprecipitation assays.

GSK3 α (ANT0074R) Rabbit mAb

Formulation: 50% slurry in PBS pH 7.2 with 0.01mg NaN₃ preservative.

Host Species

- Rabbit
- Human, Mouse, Rat,

Reactivity

- WB, IHC, IF, IP, ELISA

Applications

MW

- 51kD (Calculated)
- 51kD (Observed)

Isotype

- IgG, Kappa

Recommended Dilution Ratios

IP

Basic Information

Clonality Monoclonal

Clone Number ANT0074R

Immunogen Information

Specificity Endogenous

Target Information

Gene name GSK3A
Protein Name Glycogen synthase kinase-3 alpha

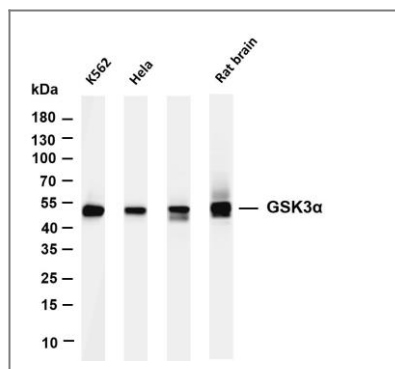
Organism	Gene ID	UniProt ID
Human	2931 ;	P49840 ;
Mouse	606496 ;	Q2NL51 ;
Rat	50686 ;	P18265 ;

Cellular Cytoplasm
Localization

Tissue specificity Brain, Eye, Foreskin, Lung, Pancreas, Platelet, Testis,

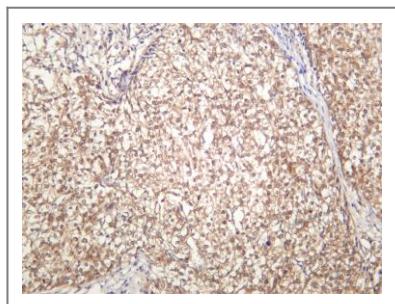
Function Catalytic activity:ATP + [tau protein] = ADP + [tau protein] phosphate.,Function:Implicated in the hormonal control of several regulatory proteins including glycogen synthase, MYB and the transcription factor JUN.,similarity:Belongs to the protein kinase superfamily.,similarity:Belongs to the protein kinase superfamily. CMGC Ser/Thr protein kinase family. GSK-3 subfamily.,similarity:Contains 1 protein kinase domain.,subunit:Monomer.,

Validation Data



Various whole cell lysates were separated by 4-20% SDS-PAGE, and the membrane was blotted with anti-GSK3 α (ANT0074R) antibody. The HRPconjugated Goat anti-Rabbit IgG(H + L) antibody was used to detect the antibody. Lane 1: K562 Lane 2: HeLa Lane 3: Mouse brain Lane 4: Rat brain
Predicted band size: 51kDa Observed band size: 51kDa

Human breast carcinoma was stained with anti-GSK3 α (ANT0074R) rabbit antibody



For Research use only, not for diagnostics and clinical use
Contact Antagene Inc Tel 1-866-964-2589 Email: info@antageneinc.com