



## Mouse Monoclonal Antibody **GSK3 $\alpha$** conjugated to Sepharose Beads

CatalogNo: **ANT8225-M**

Size 200ul

Storage Store at 4 °C for frequent use

### Description

This Antagene antibody is immobilized by the covalent reaction of hydrazinonicotinamide-modified antibody with formylbenzamide-modified beads. It is useful for immunoprecipitation.

### **GSK3 $\alpha$ (ANT0074R) Rabbit mAb**

Formulation: Each vial contains 1mg/ml Magnetic Bead in PBS, pH 7.2, 0.05mg ANaN3.

#### Host Species

- Rabbit
- Human, Mouse, Rat,

#### Reactivity

- WB, IHC, IF, IP, ELISA

#### Applications

#### MW

- 51kD (Calculated)
  - IgG, Kappa
- 51kD (Observed)

#### Isotype

## Recommended Dilution Ratios

### IP

### Basic Information

**Clonality** Monoclonal

**Clone Number** ANT0074R

# Immunogen Information

Specificity      Endogenous

## Target Information

Gene name      GSK3A  
Protein Name      Glycogen synthase kinase-3 alpha

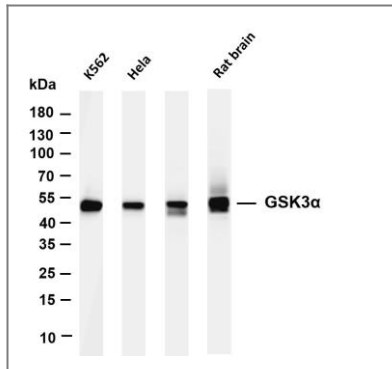
Organism	Gene ID	UniProt ID
Human	<a href="#">2931</a> ;	<a href="#">P49840</a> ;
Mouse	<a href="#">606496</a> ;	<a href="#">Q2NL51</a> ;
Rat	<a href="#">50686</a> ;	<a href="#">P18265</a> ;

Cellular      Cytoplasm  
Localization

Tissue specificity Brain, Eye, Foreskin, Lung, Pancreas, Platelet, Testis,

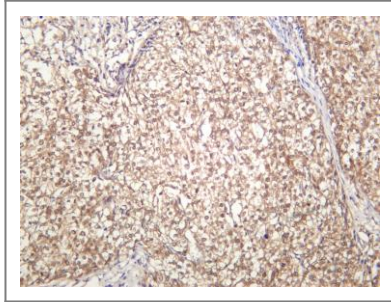
Function      Catalytic activity:ATP + [tau protein] = ADP + [tau protein] phosphate.,Function:Implicated in the hormonal control of several regulatory proteins including glycogen synthase, MYB and the transcription factor JUN.,similarity:Belongs to the protein kinase superfamily.,similarity:Belongs to the protein kinase superfamily. CMGC Ser/Thr protein kinase family. GSK-3 subfamily.,similarity:Contains 1 protein kinase domain.,subunit:Monomer.,

## Validation Data



Various whole cell lysates were separated by 4-20% SDS-PAGE, and the membrane was blotted with anti-GSK3 $\alpha$  (ANT0074R) antibody. The HRPconjugated Goat anti-Rabbit IgG(H + L) antibody was used to detect the antibody. Lane 1: K562 Lane 2: HeLa Lane 3: Mouse brain Lane 4: Rat brain  
Predicted band size: 51kDa Observed band size: 51kDa

Human breast carcinoma was stained with anti-GSK3 $\alpha$  (ANT0074R) rabbit antibody



---

For Research use only, not for diagnostics and clinical use  
Contact Antagene Inc Tel 1-866-964-2589 Email: [info@antageneinc.com](mailto:info@antageneinc.com)