



Mouse Monoclonal Antibody **HP1 α** conjugated to Sepharose Beads

CatalogNo: **ANT8224-S**

Size 200ul

Storage Store at 4 °C for frequent use

Description

This Antagene antibody is immobilized via covalent binding of primary amino groups to N-hydroxysuccinimide (NHS)-activated sepharose beads. It is useful for immunoprecipitation assays.

HP1 α (ANT0073R) Rabbit mAb

Formulation: 50% slurry in PBS pH 7.2 with 0.01mg NaN₃ preservative.

Host Species

- Rabbit
- Human, Mouse, Rat,

Reactivity

- WB, IHC, IF, IP, ELISA

Applications

MW

- 22kD (Calculated)
 - IgG, Kappa
- 22kD (Observed)

Isotype

Recommended Dilution Ratios

IP

Basic Information

Clonality	Monoclonal
-----------	------------

Clone Number	ANT0073R
--------------	----------

Immunogen Information

Specificity Endogenous

Gene name CBX5 HP1A

Protein Name Chromobox protein homolog 5 (Antigen p25) (Heterochromatin protein 1 homolog alpha) (HP1 alpha)

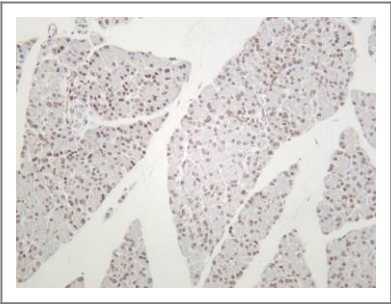
Organism	Gene ID	UniProt ID
Human	23468 ;	P45973 ;
Mouse		Q61686 ;

Cellular Localization Nucleus

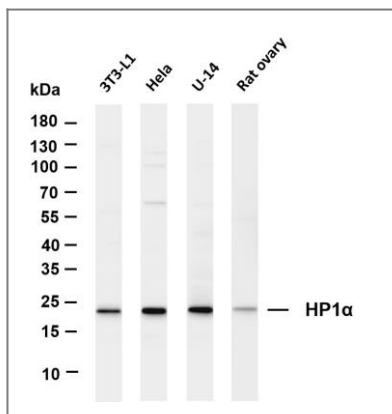
Tissue specificity Epithelium,Fetal brain cortex,Placenta,

Function Function:Component of heterochromatin. Recognizes and binds histone H3 tails methylated at 'Lys-9', leading to epigenetic repression. Can interact with lamin B receptor (LBR). This interaction can contribute to the association of the heterochromatin with the inner nuclear membrane. Involved in the formation of functional kinetochore through interaction with MIS12 complex proteins.,ANTM:Phosphorylation of HP1 and LBR may be responsible for some of the alterations in chromatin organization and nuclear structure which occur at various times during the cell cycle (By similarity). Phosphorylated during interphase and possibly hyper-phosphorylated during mitosis.,similarity:Contains 2 chromo domains.,subcellular location:Component of centromeric and pericentromeric heterochromatin. Associates with chromosomes during mitosis. Associates specifically with chromatin during metaphase and anaphase.,subunit:Interacts with SUV420H1 and SUV420H2 (By similarity). Interacts directly with ATRX, CHAF1A, LBR, NIPBL, SP100, STAM2 and TRIM28 via the chromoshadow domain. Can interact directly with CBX3 via the chromoshadow domain. Interacts with histone H3 methylated at 'Lys-9'. Interacts with MIS12 and C20orf127. Interacts with HP1BP3.,

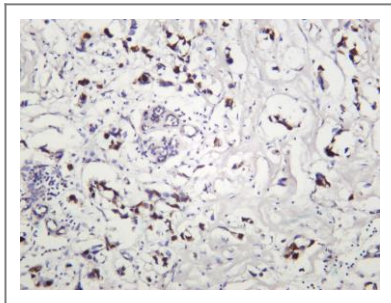
Validation Data



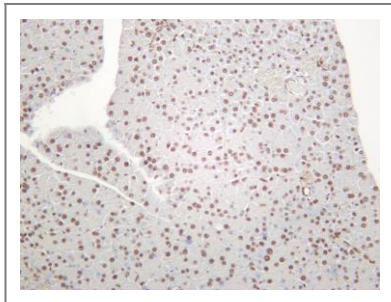
Rat pancreas was stained with anti-HP1α (ANT0073R) rabbit antibody



Various whole cell lysates were separated by 4-20% SDS-PAGE, and the membrane was blotted with anti-HP1α (ANT0073R) antibody. The HRPconjugated Goat anti-Rabbit IgG(H + L) antibody was used to detect the antibody. Lane 1: 3T3-L1 Lane 2: HeLa Lane 3: U-14 Lane 4: Rat ovary
 Predicted band size: 22kDa Observed band size: 22kDa



Human breast carcinoma was stained with anti-HP1α (ANT0073R) rabbit antibody



Mouse pancreas was stained with anti-HP1α (ANT0073R) rabbit antibody

For Research use only, not for diagnostics and clinical use
Contact Antagene Inc Tel 1-866-964-2589 Email: info@antageneinc.com