



## NDUFB8 (ANT0069R) Rabbit mAb

CatalogNo: ANT8221 **Recombinant** 

Formulation: PBS,50%glycerol,0.05%Proclin 300,0.05%BSA  
Quantity : 100 ug/vial

### Host Species

- Rabbit
- Human,Mouse,Rat,

### Reactivity

- WB,IHC,IF,IP,ELISA

### Applications

### MW

- 22kD (Calculated)
  - IgG,Kappa
- 22kD (Observed)

### Isotype

## Recommended Dilution Ratios

IHC 1:200-1:1000

WB 1:1000-1:5000

IF 1:200-1:1000

ELISA 1:5000-1:20000

IP 1:50-1:200,

## Storage

**Storage\*** -15°C to -25°C/1 year(Do not lower than -25°C)

## Basic Information

**Clonality** Monoclonal

**Clone Number** ANT0069R

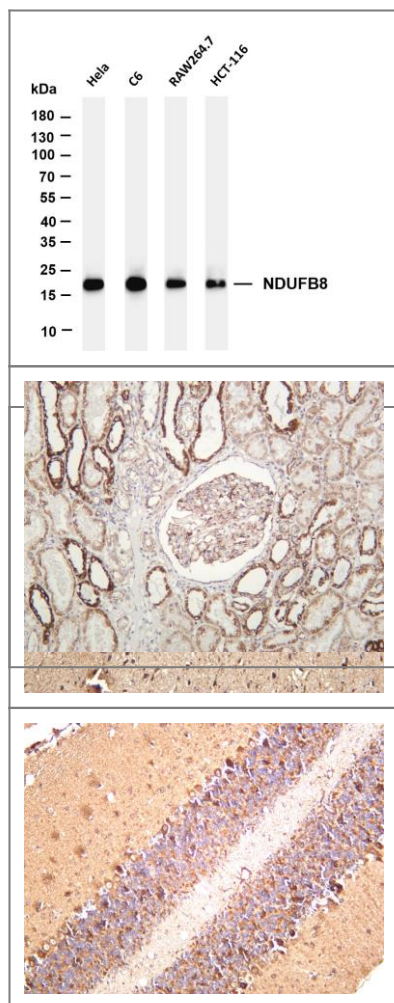
## Target Information

Endogenous

Gene name	NDUFB8		
Protein Name	NADH dehydrogenase [ubiquinone] 1 beta subcomplex subunit 8, mitochondrial (Complex IASHI) (CI-ASHI) (NADH-ubiquinone oxidoreductase ASHI subunit)		
	Organism	Gene ID	UniProt ID
	Human	<a href="#">4714;</a>	<a href="#">O95169;</a>
	Mouse		<a href="#">Q9D6J5;</a>
Cellular Localization	Mitochondrion inner membrane		
Tissue specificity	Blood,Brain,Lung,Umbilical cord blood,		
Function	Function:Accessory subunit of the mitochondrial membrane respiratory chain NADH dehydrogenase (Complex I), that is believed to be not involved in catalysis. Complex I functions in the transfer of electrons from NADH to the respiratory chain. The immediate electron acceptor for the enzyme is believed to be ubiquinone.,similarity:Belongs to the complex I NDUFB8 subunit family.,subunit:Complex I is composed of 45 different subunits.,		



## Validation Data



Various whole cell lysates were separated by 4-20% SDS-PAGE, and the membrane was blotted with anti-NDUF8 (ANT0069R) antibody. The HRPconjugated Goat anti-Rabbit IgG(H + L) antibody was used to detect the antibody. Lane 1: HeLa Lane 2: C6 Lane 3: RAW264.7 Lane 4: HCT-116

Predicted band size: 22kDa Observed band size: 22kDa

Human brain was stained with anti-NDUF8 (ANT0069R) rabbit antibody  
Human kidney was stained with anti-NDUF8 (ANT0069R) rabbit antibody

Mouse brain was stained with anti-NDUF8 (ANT0069R) rabbit antibody

For Research use only, not for diagnostics and clinical use  
Contact Antagene Inc Tel 1-866-964-2589 Email: [info@antageneinc.com](mailto:info@antageneinc.com)