



## Mouse Monoclonal Antibody **Notch2** conjugated to Sepharose Beads

CatalogNo: **ANT8219-M**

Size 200ul

Storage Store at 4 °C for frequent use

### Description

This Antagene antibody is immobilized by the covalent reaction of hydrazinonicotinamide-modified antibody with formylbenzamide-modified beads. It is useful for immunoprecipitation.

### **Notch2 (ANT0067R) Rabbit mAb**

Formulation: Each vial contains 1mg/ml Magnetic Bead in PBS, pH 7.2, 0.05mg ANaN3.

#### Host Species

- Rabbit

#### Reactivity

- Human, Mouse, Rat,

#### Applications

- WB, IHC, IF, IP, ELISA

#### MW

- 265kD (Calculated)
- 120kD (Observed)

#### Isotype

- IgG, Kappa

## **Recommended Dilution Ratios**

### **IP**

## **Basic Information**

#### Clonality

Monoclonal

Immunogen Information

Specificity      Endogenous

Gene name      NOTCH2

Protein Name      Neurogenic locus notch homolog protein 2

Organism	Gene ID	UniProt ID
Human	<a href="#">4853</a> ;	<a href="#">Q04721</a> ;
Mouse	<a href="#">18129</a> ;	<a href="#">Q35516</a> ;
Rat	<a href="#">29492</a> ;	<a href="#">Q9QW30</a> ;

Cellular Localization      Cytoplasm, Membrane

Tissue specificity      Expressed in the brain, heart, kidney, lung, skeletal muscle and liver. Ubiquitously expressed in the embryo.

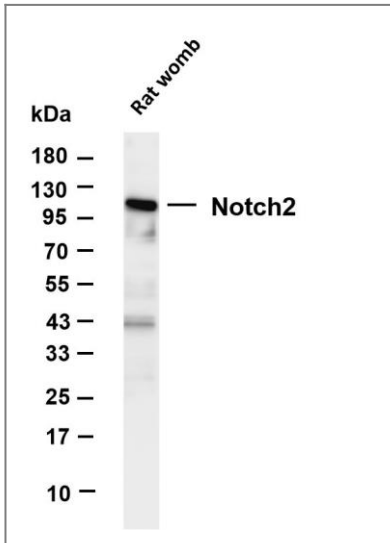
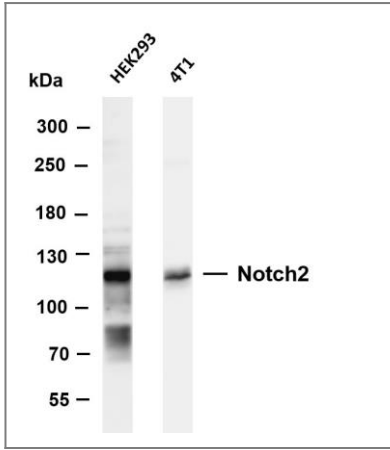
Function      Disease:Defects in NOTCH2 are the cause of Alagille syndrome type 2 (ALGS2) [MIM:610205]. Alagille syndrome is an autosomal dominant multisystem disorder defined clinically by hepatic bile duct paucity and cholestasis in association with cardiac, skeletal, and ophthalmologic manifestations. There are characteristic facial features and less frequent clinical involvement of the renal and vascular systems.,Function:Functions as a receptor for membrane-bound ligands Jagged1, Jagged2 and Delta1 to regulate cell-fate determination. Upon ligand activation through the released notch intracellular domain (NICD) it forms a transcriptional activator complex with RBP-J kappa and activates genes of the enhancer of split locus. Affects the implementation of differentiation, proliferation and apoptotic programs.,ANTM:Phosphorylated.,PTM:Synthesized in the endoplasmic reticulum as an inactive form which is proteolytically cleaved by a furin-like convertase in the trans-Golgi network before it reaches the plasma membrane to yield an active, ligand-accessible form.

Cleavage results in a C-terminal fragment N(TM) and a N-terminal fragment N(EC). Following ligand binding, it is cleaved by TNF-alpha converting enzyme (TACE) to yield a membrane-associated intermediate fragment called notch extracellular truncation (NEXT). This fragment is then cleaved by presenilin dependent gamma-secretase to release a notch-derived peptide containing the intracellular domain (NICD) from the membrane.,similarity:Belongs to the NOTCH family.,similarity:Contains 3 LNR (Lin/Notch) repeats.,similarity:Contains 35 EGF-like domains.,similarity:Contains 6 ANK repeats.,subcellular location:Following proteolytical processing NICD is translocated to the nucleus.,subunit:Heterodimer of a C-terminal fragment N(TM) and an N-terminal fragment N(EC) which are probably linked by disulfide bonds (By similarity). Interacts with MAML1, MAML2 and MAML3 which act as transcriptional coactivators for NOTCH2.,tissue specificity:Expressed in the brain, heart, kidney, lung, skeletal muscle and liver,

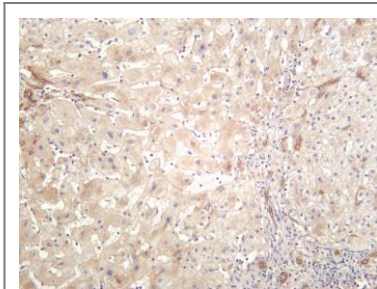
## Validation

### Data

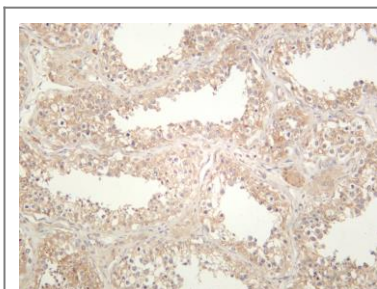
Various whole cell lysates were separated by 4-8% SDS-PAGE, and the membrane was blotted with anti-Notch2 (ANT0067R) antibody. The HRPconjugated Goat anti-Rabbit IgG(H + L) antibody was used to detect the antibody. Lane 1: HEK293 Lane 2: 4T1  
Predicted band size: 265kDa Observed band size: 120kDa



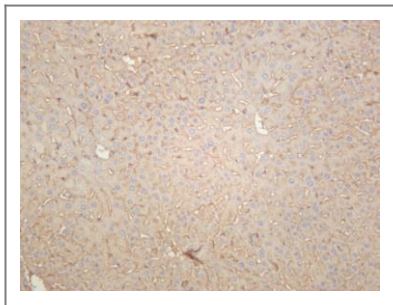
Various whole cell lysates were separated by 4-20% SDS-PAGE, and the membrane was blotted with anti-Notch2 (ANT0067R) antibody. The HRPconjugated Goat anti-Rabbit IgG(H + L) antibody was used to detect the antibody. Lane 1: Rat womb Predicted band size: 265kDa Observed band size: 120kDa



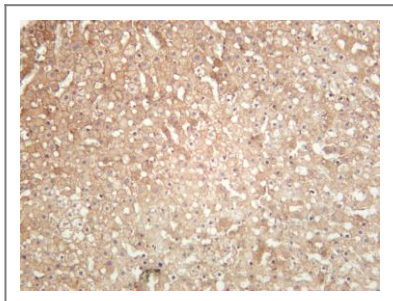
Human liver was stained with anti-Notch2 (ANT0067R) rabbit antibody



Human testis was stained with anti-Notch2 (ANT0067R) rabbit antibody



Mouse liver was stained with anti-Notch2 (ANT0067R) rabbit antibody



Rat liver was stained with anti-Notch2 (ANT0067R) rabbit antibody

For Research use only, not for diagnostics and clinical use  
Contact Antagene Inc Tel 1-866-964-2589 Email: [info@antageneinc.com](mailto:info@antageneinc.com)