



Mouse Monoclonal Antibody **Arginase-1** conjugated to Sepharose Beads

CatalogNo: **ANT8217-S**

Size 200ul

Storage Store at 4 °C for frequent use

Description

This Antagene antibody is immobilized via covalent binding of primary amino groups to N-hydroxysuccinimide (NHS)-activated sepharose beads. It is useful for immunoprecipitation assays.

Arginase-1 (ANT0064R) Rabbit mAb

Formulation: 50% slurry in PBS pH 7.2 with 0.01mg NaN₃ preservative.

Host Species

- Rabbit
- Human, Mouse, Rat,

Reactivity

- WB, IHC, IF, IP, ELISA

Applications

MW

- 35kD (Calculated)
 - IgG, Kappa
- 35kD (Observed)

Isotype

Recommended Dilution Ratios

IP

Basic Information

Clonality

Monoclonal

Clone Number ANT0064R

Immunogen Information

Specificity Endogenous

Gene name ARG1

Protein Name Arginase-1 (EC 3.5.3.1) (Liver-type arginase) (Type I arginase)

	Organism	Gene ID	UniProt ID
	Human	383 ;	P05089 ;

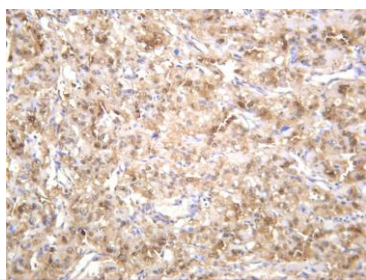
Cellular Localization Cytoplasm

Tissue specificity Within the immune system initially reported to be selectively expressed in granulocytes (polymorphonuclear leukocytes [PMNs]) (PubMed:15546957). Also detected in macrophages mycobacterial granulomas (PubMed:23749634). Expressed in group2 innate lymphoid cells (ILC2s) during lung disease (PubMed:27043409).

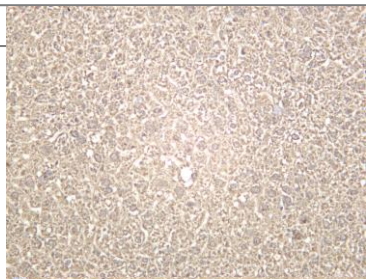
Function Catalytic activity:L-arginine + H(2)O = L-ornithine + urea.,cofactor:Binds 2 manganese ions per subunit.,Disease:Defects in ARG1 are the cause of argininemia (ARGIN) [MIM:207800]; also known as hyperargininemia. Argininemia is a rare autosomal recessive disorder of the urea cycle. Arginine is elevated in the blood and cerebrospinal fluid, and periodic hyperammonemia occurs. Clinical manifestations include developmental delay, seizures, mental retardation, hypotonia, ataxia, progressive spastic quadriplegia.,induction:By arginine or homoarginine.,online information:Arginase entry,pathway:Nitrogen metabolism; urea cycle; L-ornithine and urea from L-arginine: step 1/1.,similarity:Belongs to the arginase family.,subunit:Homotrimer.,

Validation Data

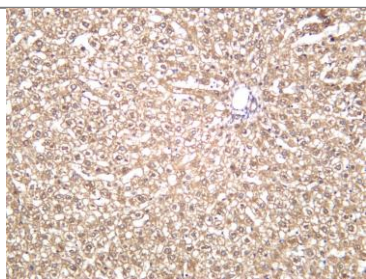
Human hepatocellular carcinoma was stained with anti-Arginase-1 (ANT0064R) rabbit antibody



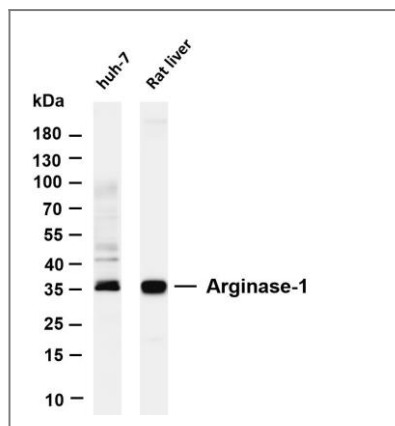
Human liver was stained with anti-Arginase-1 (ANT0064R) rabbit antibody



Mouse liver was stained with anti-Arginase-1 (ANT0064R) rabbit antibody



Rat liver was stained with anti-Arginase-1 (ANT0064R) rabbit antibody



Various whole cell lysates were separated by 4-20% SDS-PAGE, and the membrane was blotted with anti-Arginase-1 (ANT0064R) antibody. The HRPconjugated Goat anti-Rabbit IgG(H + L) antibody was used to detect the antibody. Lane 1: huh-7 Lane 2: Rat liver
Predicted band size: 35kDa Observed band size: 35kDa

For Research use only, not for diagnostics and clinical use
Contact Antagene Inc Tel 1-866-964-2589 Email: info@antageneinc.com