



## Mouse Monoclonal Antibody **Arginase-1** conjugated to Sepharose Beads

CatalogNo: **ANT8217-M**

Size 200ul

Storage Store at 4 °C for frequent use

### Description

This Antagene antibody is immobilized by the covalent reaction of hydrazinonicotinamide-modified antibody with formylbenzamide-modified beads. It is useful for immunoprecipitation.

### **Arginase-1 (ANT0064R) Rabbit mAb**

Formulation: Each vial contains 1mg/ml Magnetic Bead in PBS, pH 7.2, 0.05mg ANaN3.

#### Host Species

- Rabbit
- Human, Mouse, Rat,

#### Reactivity

- WB, IHC, IF, IP, ELISA

#### Applications

#### MW

- 35kD (Calculated)
  - IgG, Kappa
- 35kD (Observed)

#### Isotype

## **Recommended Dilution Ratios**

### **IP**

## **Basic Information**

#### Clonality

Monoclonal

Clone Number      ANT0064R

**Immunogen Information**

**Specificity**      Endogenous

**Gene name**      ARG1

**Protein Name**      Arginase-1 (EC 3.5.3.1) (Liver-type arginase) (Type I arginase)

	Organism	Gene ID	UniProt ID
	Human	<a href="#">383</a> ;	<a href="#">P05089</a> ;

**Cellular  
Localization**      Cytoplasm

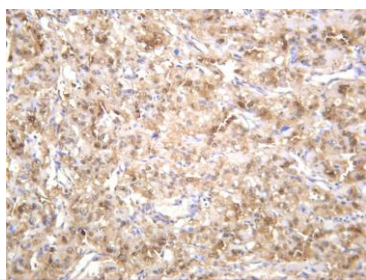
**Tissue specificity** Within the immune system initially reported to be selectively expressed in granulocytes (polymorphonuclear leukocytes [PMNs]) (PubMed:15546957). Also detected in macrophages mycobacterial granulomas (PubMed:23749634). Expressed in group2 innate lymphoid cells (ILC2s) during lung disease (PubMed:27043409).

**Function** Catalytic activity:L-arginine + H(2)O = L-ornithine + urea.,cofactor:Binds 2 manganese ions per subunit.,Disease:Defects in ARG1 are the cause of argininemia (ARGIN) [MIM:207800]; also known as hyperargininemia. Argininemia is a rare autosomal recessive disorder of the urea cycle. Arginine is elevated in the blood and cerebrospinal fluid, and periodic hyperammonemia occurs. Clinical manifestations include developmental delay, seizures, mental retardation, hypotonia, ataxia, progressive spastic quadriplegia.,induction:By arginine or homoarginine.,online information:Arginase entry,pathway:Nitrogen metabolism; urea cycle; L-ornithine and urea from L-arginine: step 1/1.,similarity:Belongs to the arginase family.,subunit:Homotrimer.,

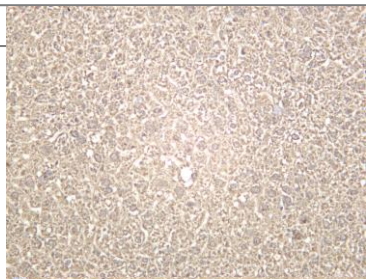
---

## Validation Data

Human hepatocellular carcinoma was stained with anti-Arginase-1 (ANT0064R) rabbit antibody



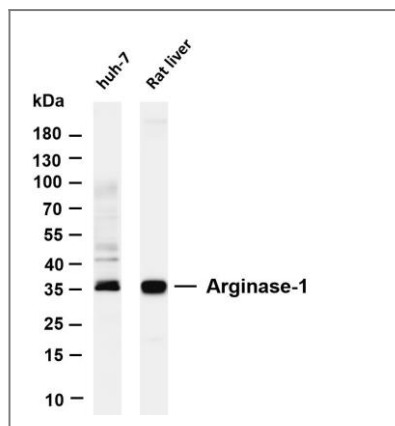
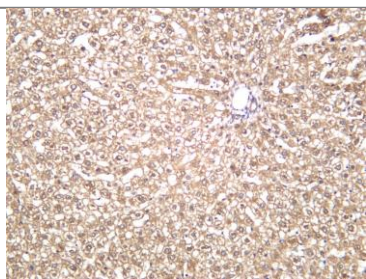
Human liver was stained with anti-Arginase-1 (ANT0064R) rabbit antibody



Mouse liver was stained with anti-Arginase-1 (ANT0064R) rabbit antibody



Rat liver was stained with anti-Arginase-1 (ANT0064R) rabbit antibody



Various whole cell lysates were separated by 4-20% SDS-PAGE, and the membrane was blotted with anti-Arginase-1 (ANT0064R) antibody. The HRPconjugated Goat anti-Rabbit IgG(H + L) antibody was used to detect the antibody. Lane 1: huh-7 Lane 2: Rat liver  
Predicted band size: 35kDa Observed band size: 35kDa

For Research use only, not for diagnostics and clinical use  
Contact Antagene Inc Tel 1-866-964-2589 Email: [info@antageneinc.com](mailto:info@antageneinc.com)