



Mouse Monoclonal Antibody **cGAS** conjugated to Sepharose Beads

CatalogNo: **ANT8210-S**

Size 200ul

Storage Store at 4 °C for frequent use

Description

This Antagene antibody is immobilized via covalent binding of primary amino groups to N-hydroxysuccinimide (NHS)-activated sepharose beads. It is useful for immunoprecipitation assays.

cGAS (ANT0055R) Rabbit mAb

Formulation: 50% slurry in PBS pH 7.2 with 0.01mg NaN₃ preservative.

Host Species

- Rabbit
- Human,
- WB,IHC,IF,IP,ELISA

Reactivity

Applications

MW

- 62kD (Calculated)
- IgG,Kappa
- 62kD (Observed)

Isotype

Recommended Dilution Ratios

IP

Basic Information

Clonality	Monoclonal
Clone Number	ANT0055R

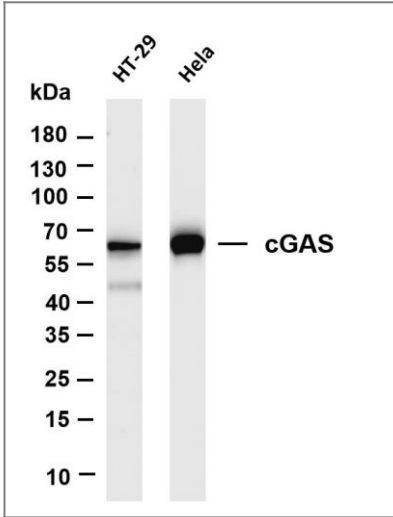
Immunogen Information

Specificity Endogenous

Target Information

Gene name	MB21D1 cGAS C6orf150		
Protein Name	M21D1		
Cellular Localization	Organism	Gene ID	UniProt ID
	Human	115004 ;	Q8N884 ;
Tissue specificity	Expressed in the monocytic cell line THP1.		

Validation Data



Various whole cell lysates were separated by 4-20% SDS-PAGE, and the membrane was blotted with anti-cGAS (ANT0055R) antibody. The HRPconjugated Goat anti-Rabbit IgG(H + L) antibody was used to detect the antibody. Lane 1: HT-29 Lane 2: HeLa Predicted band size: 62kDa Observed band size: 62kDa