



## Mouse Monoclonal Antibody **CD31** conjugated to Sepharose Beads

CatalogNo: **ANT8207-S**

Size 200ul

Storage Store at 4 °C for frequent use

### Description

This Antagene antibody is immobilized via covalent binding of primary amino groups to N-hydroxysuccinimide (NHS)-activated sepharose beads. It is useful for immunoprecipitation assays.

### **CD31 (ANT0050R) Rabbit mAb**

Formulation: 50% slurry in PBS pH 7.2 with 0.01mg NaN<sub>3</sub> preservative.

#### Host Species

- Rabbit
- Human, Mouse, Rat,

#### Reactivity

- WB, IHC, IF, IP, ELISA

#### Applications

#### MW

- 81kD (Calculated)
- 130kD (Observed)

#### Isotype

- IgG, Kappa

## **Recommended Dilution Ratios**

### **IP**

## **Basic Information**

#### Clonality

Monoclonal

Clone Number      ANT0050R

Immunogen Information

Specificity      Endogenous

Gene name      PECAM1

Protein Name      Platelet endothelial cell adhesion molecule (PECAM-1) (EndoCAM) (GPIIA') (PECA1) (CD antigen CD31)

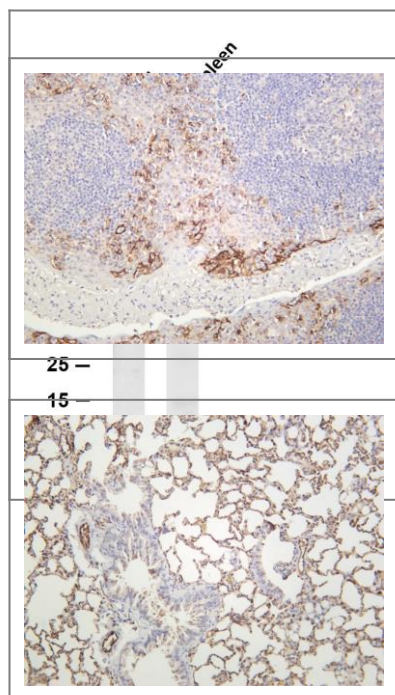
Organism	Gene ID	UniProt ID
Human	<a href="#">5175;</a>	<a href="#">P16284;</a>
Mouse	<a href="#">18613;</a>	<a href="#">Q08481;</a>
Rat	<a href="#">29583;</a>	<a href="#">Q3SWT0;</a>

Cellular      Membrane  
Localization

Tissue specificity      Expressed on platelets and leukocytes and is primarily concentrated at the borders between endothelial cells (PubMed:18388311, PubMed:21464369). Expressed in human umbilical vein endothelial cells (HUVECs) (at protein level) (PubMed:19342684, PubMed:17580308). Expressed on neutrophils (at protein level) (PubMed:17580308). Isoform Long predominates in all tissues examined (PubMed:12433657). Isoform Delta12 is detected only in trachea (PubMed:12433657). Isoform Delta14-15 is only detected in lung (PubMed:12433657). Isoform Delta14 is detected in all tissues examined with the strongest expression in heart (PubMed:12433657). Isoform Delta15 is expressed in brain, testis, ovary, cell surface of platelets, human umbilical vein endothelial cells (HUVECs), Jurkat T-cell leukemia, human erythroleukemia (HEL) and U-937 histiocytic lymphoma cell lines (at protein level) (PubMed:12433657, PubMed:18388311).

Function      Function:This protein is a cell adhesion molecule expressed on platelets and at endothelial cell intercellular junctions.,online information:CD31 entry,online information:PECAM-1,online information:The Singapore human mutation and polymorphism database,ANTM:Phosphorylated on Ser and Tyr residues after cellular activation.,similarity:Contains 6 Ig-like C2-type (immunoglobulin-like) domains.,tissue specificity:Long isoform predominates all tissues examined, isoform Delta12 was detected only in trachea and isoform Delta14-15 only in lung, isoform Delta14 was detected in all tissues examined with the strongest expression in heart.,

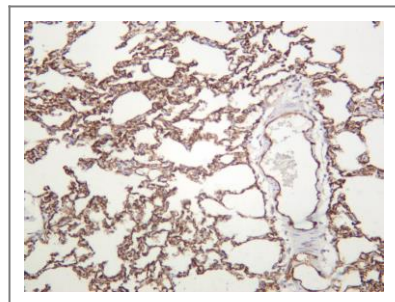
## Validation Data



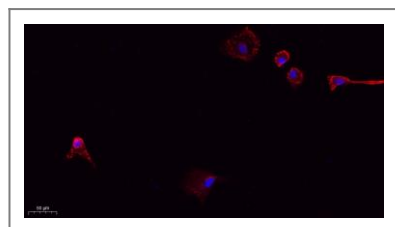
Various whole cell lysates were separated by 4-20% SDS-PAGE, and the membrane was blotted with anti-CD31 (ANT0050R) antibody. The HRPconjugated Goat anti-Rabbit IgG(H + L) antibody was used to detect the antibody. Lane 1: THP-1 Lane 2: Rat spleen Predicted band size: 81kDa Observed band size: 130kDa

Human tonsil was stained with anti-CD31 (ANT0050R) rabbit antibody

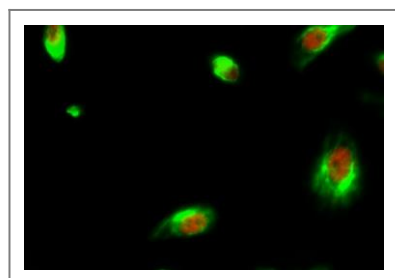
Mouse lung was stained with anti-CD31 (ANT0050R) rabbit antibody



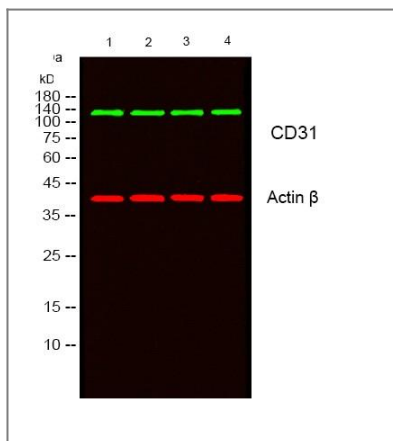
Rat lung was stained with anti-CD31 (ANT0050R) rabbit antibody



Immunofluorescence analysis of A549. 1,primary Antibody(red) was diluted at 1:200(4°C overnight). 2, Goat Anti Rabbit IgG (H&L) - Alexa Fluor 594 Secondary antibody was diluted at 1:1000(room temperature, 50min).3, Picture B: DAPI(blue) 10min.



Immunofluorescence analysis of HeLa cell. 1,BMP-2 Antibody(green) was diluted at 1:200(4° overnight). (red) was diluted at 1:200(4° overnight). 2, Goat Anti Rabbit Alexa Fluor 488 Catalog:RS3211 was diluted at 1:1000(room temperature, 50min). Goat Anti Mouse Alexa Fluor 594 Catalog:RS3608 was diluted at 1:1000(room temperature, 50min).



Western blot analysis of lysates from 1) HepG2, 2) K562, 3) L929, 4) MOUSEBRAIN cells, (Green) primary antibody was diluted at 1:1000, 4° over night, secondary antibody (cat:RS23920) was diluted at 1:10000, 37° 1 hour. (Red) Actin β Monoclonal Antibody (5B7) (cat:YM3028) antibody was diluted at 1:5000 as loading control, 4° over night, secondary antibody (cat:RS23710) was diluted at 1:10000, 37° 1 hour.

For Research use only, not for diagnostics and clinical use  
Contact Antagene Inc Tel 1-866-964-2589 Email: [info@antageneinc.com](mailto:info@antageneinc.com)