



## Mouse Monoclonal Antibody **NDUFS3** conjugated to Sepharose Beads

CatalogNo: **ANT8206-M**

Size 200ul

Storage Store at 4 °C for frequent use

### Description

This Antagene antibody is immobilized by the covalent reaction of hydrazinonicotinamide-modified antibody with formylbenzamide-modified beads. It is useful for immunoprecipitation.

### **NDUFS3 (ANT0048R) Rabbit mAb**

Formulation: Each vial contains 1mg/ml Magnetic Bead in PBS, pH 7.2, 0.05mg ANaN3.

#### Host Species

- Rabbit
- Human, Mouse, Rat,

#### Reactivity

- WB, IHC, IF, IP, ELISA

#### Applications

#### MW

- 30kD (Calculated)
- 30kD (Observed)
- IgG, Kappa

#### Isotype

## Recommended Dilution Ratios

### IP

### Basic Information

**Clonality** Monoclonal

**Clone Number** ANT0048R

# Immunogen Information

Specificity      Endogenous

## Target Information

Gene name      NDUFS3

Protein Name      NADH dehydrogenase [ubiquinone] iron-sulfur protein 3 mitochondrial

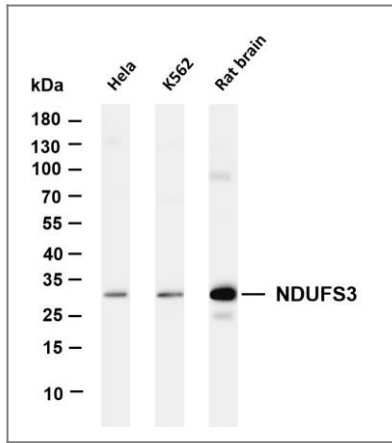
Organism	Gene ID	UniProt ID
Human	<a href="#">4722</a> ;	<a href="#">O75489</a> ;
Mouse	<a href="#">68349</a> ;	<a href="#">Q9DCT2</a> ;

Cellular      Mitochondrion inner membrane  
Localization

Tissue specificity Brain,Cajal-Retzius cell,Pituitary,Skin,Stomach mucosa,Uter

Function      Catalytic activity:NADH + acceptor = NAD(+) + reduced acceptor.,Catalytic activity:NADH + ubiquinone = NAD(+) + ubiquinol.,Function:Core subunit of the mitochondrial membrane respiratory chain NADH dehydrogenase (Complex I) that is believed to belong to the minimal assembly required for catalysis. Complex I functions in the transfer of electrons from NADH to the respiratory chain. The immediate electron acceptor for the enzyme is believed to be ubiquinone.,similarity:Belongs to the complex I 30 kDa subunit family.,subunit:Mammalian complex I is composed of 45 different subunits.,

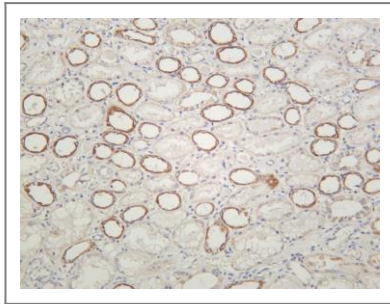
## Validation Data



Various whole cell lysates were separated by 4-20% SDS-PAGE, and the membrane was blotted with anti-NDUF3 (ANT0048R) antibody. The HRPconjugated Goat anti-Rabbit IgG(H + L) antibody was used to detect the antibody. Lane 1: HeLa Lane 2: K562 Lane 3: Rat brain Predicted band size:

30kDa Observed band size: 30kDa

Human kidney was stained with anti-NDUF3 (ANT0048R) rabbit antibody



---

For Research use only, not for diagnostics and clinical use  
Contact Antagene Inc Tel 1-866-964-2589 Email: [info@antageneinc.com](mailto:info@antageneinc.com)