

Rab7 (ANT0045R) Rabbit mAb

CatalogNo: ANT8204 **Recombinant** 

Formulation: PBS,50%glycerol,0.05%Proclin 300,0.05%BSA
Quantity : 100 ug/vial

Host Species

- Rabbit
- Human,Mouse,Rat,

Reactivity

- WB,IHC,IF,IP,ELISA

Applications

MW

- 24kD (Calculated)
 - IgG,Kappa
- 24kD (Observed)

Isotype

Recommended Dilution Ratios

IHC 1:200-1:1000

WB 1:1000-1:5000

IF 1:200-1:1000

ELISA 1:5000-1:20000

IP 1:50-1:200,

Storage

Storage* -15°C to -25°C/1 year(Do not lower than -25°C)

Basic Information

Clonality Monoclonal

Clone Number ANT0045R

Target Information

Endogenous

Gene name RAB7A RAB7

Protein Name RAB7A

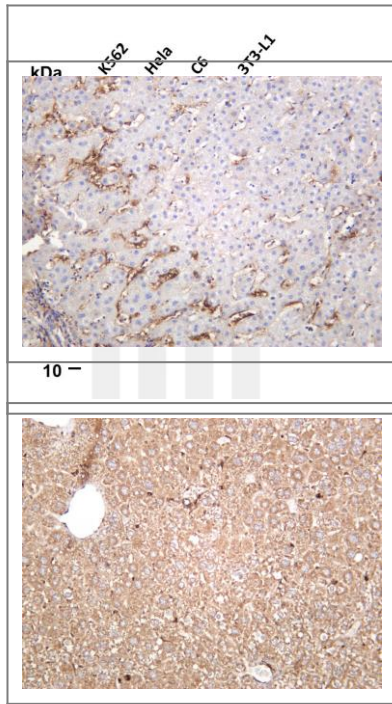
| Organism | Gene ID | UniProt ID |
|----------|------------------------|-------------------------|
| Human | 7879; | P51149; |
| Mouse | 19349; | P51150; |
| Rat | 29448; | P09527; |

Cellular Localization Cytoplasm

Tissue specificity Widely expressed; high expression found in skeletal muscle.

Function Disease:Defects in RAB7A are the cause of Charcot-Marie-Tooth disease type 2B (CMT2B) [MIM:600882]; also known as hereditary motor and sensory neuropathy II (HMSN2). CMT2B is a form of Charcot-Marie-Tooth disease, the most common inherited disorder of the peripheral nervous system. Charcot-Marie-Tooth disease is classified in two main groups on the basis of electrophysiologic properties and histopathology: primary peripheral demyelinating neuropathy or CMT1, and primary peripheral axonal neuropathy or CMT2. Neuropathies of the CMT2 group are characterized by signs of axonal regeneration in the absence of obvious myelin alterations, normal or slightly reduced nerve conduction velocities, and progressive distal muscle weakness and atrophy. CMT2B is clinically characterized by marked distal muscle weakness and a high frequency of foot ulcers, infections and amputations of the toes. CMT2B inheritance is autosomal dominant.,Function:Involved in late endocytic transport. Contributes to the maturation of phagosomes (acidification).,sequence Caution:Wrong choice of frame.,similarity:Belongs to the small GTPase superfamily. Rab family.,subcellular location:Identified by mass spectrometry in melanosome fractions from stage I to stage IV.,subunit:Interacts with RILP.,tissue specificity:Widely expressed; high expression found in skeletal muscle.,

Validation Data



Various whole cell lysates were separated by 4-20% SDS-PAGE, and the membrane was blotted with anti-Rab7 (ANT0045R) antibody. The HRPconjugated Goat anti-Rabbit IgG(H + L) antibody was used to detect the antibody. Lane 1: K562 Lane 2: HeLa Lane 3: C6 Lane 4: 3T3-L1 Predicted band size: 24kDa Observed band size: 24kDa

Human liver was stained with anti-Rab7 (ANT0045R) rabbit antibody

Mouse liver was stained with anti-Rab7 (ANT0045R) rabbit antibody

For Research use only, not for diagnostics and clinical use
Contact Antagene Inc Tel 1-866-964-2589 Email: info@antageneinc.com