



Mouse Monoclonal Antibody **GRP78/BiP** conjugated to Sepharose Beads

CatalogNo: **ANT8203-S**

Size 200ul

Storage Store at 4 °C for frequent use

Description

This Antagene antibody is immobilized via covalent binding of primary amino groups to N-hydroxysuccinimide (NHS)-activated sepharose beads. It is useful for immunoprecipitation assays.

GRP78/BiP (ANT0044R) Rabbit mAb

Formulation: 50% slurry in PBS pH 7.2 with 0.01mg NaN3a3 preservative.

Host Species

- Rabbit
- Human, Mouse, Rat,

Reactivity

- WB, IHC, IF, IP, ELISA

Applications

MW

- 72kD (Calculated)
- 78kD (Observed)
- IgG, Kappa

Isotype

Recommended Dilution Ratios

IP

Basic Information

Clonality	Monoclonal
Clone Number	ANT0044R

Immunogen Information

Specificity Endogenous

Target Information

Gene name HSPA5 GRP78

Protein Name GRP78 BiP

Organism	Gene ID	UniProt ID
Human	3309 ;	P11021 ;
Mouse	14828 ;	P20029 ;
Rat		P06761 ;

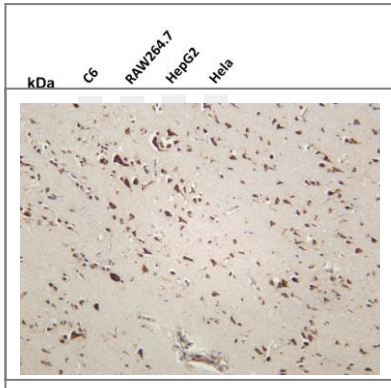
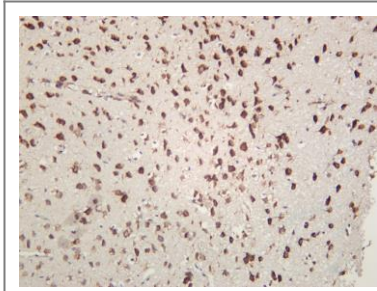
Cellular Localization Cytoplasm

Tissue specificity Articular cartilage,Brain,Cajal-Retzius cell,Cervix carcino

Function Disease:Autoantigen in rheumatoid arthritis [MIM:180300].,Function:Probably plays a role in facilitating the assembly of multimeric protein complexes inside the ER.,similarity:Belongs to the heat shock protein 70 family.,subcellular location:Identified by mass spectrometry in melanosome fractions from stage I to stage IV.,subunit:Interacts with DNAJC1 (via J domain) (By similarity). Component of an EIF2 complex at least composed of CUGBP1, CALR, CALR3, EIF2S1, EIF2S2, HSP90B1 and HSPA5. Part a large chaperone multiprotein complex comprising CABP1, DNAJB11, HSP90B1, HSPA5, HYOU, PDIA2, PDIA4, PPIB, SDF2L1, UGT1A1 and very small amounts of ERP29, but not, or at very low levels, CALR nor CANX. Interacts with TMEM132A.,

Validation Data

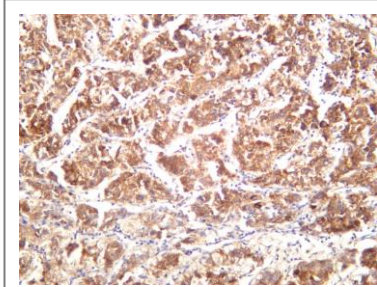
Rat brain was stained with anti-GRP78/BiP (ANT0044R) rabbit antibody



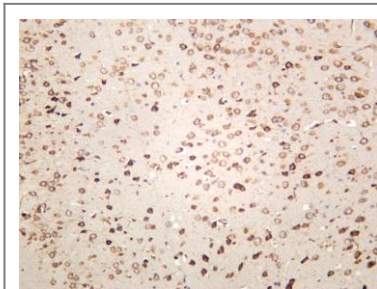
Various whole cell lysates were separated by 4-20% SDS-PAGE, and the membrane was blotted with anti-GRP78/BiP (ANT0044R) antibody. The HRPconjugated Goat anti-Rabbit IgG(H + L) antibody was used to detect the antibody. Lane 1: C6 Lane 2: RAW264.7 Lane 3: HepG2 Lane 4: HeLa

Predicted band size: 72kDa Observed band size: 78kDa

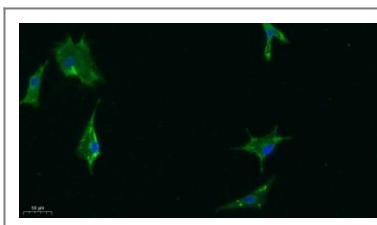
Human brain was stained with anti-GRP78/BiP (ANT0044R) rabbit antibody



Human hepatocellular carcinoma was stained with anti-GRP78/BiP (ANT0044R) rabbit antibody



Mouse brain was stained with anti-GRP78/BiP (ANT0044R) rabbit antibody



Immunofluorescence analysis of A549. 1,primary Antibody was diluted at 1:200(4°C overnight). 2, Goat Anti Rabbit IgG (H&L) - Alexa Fluor 488 Secondary antibody was diluted at 1:1000(room temperature, 50min).3, Picture B: DAPI(blue) 10min.

For Research use only, not for diagnostics and clinical use
Contact Antagene Inc Tel 1-866-964-2589 Email: info@antageneinc.com