



Mouse Monoclonal Antibody **Claudin 1** conjugated to Sepharose Beads

CatalogNo: **ANT8199-M**

Size 200ul

Storage Store at 4 °C for frequent use

Description

This Antagene antibody is immobilized by the covalent reaction of hydrazinonicotinamide-modified antibody with formylbenzamide-modified beads. It is useful for immunoprecipitation.

Claudin 1 (ANT0036R) Rabbit mAb

Formulation: Each vial contains 1mg/ml Magnetic Bead in PBS, pH 7.2, 0.05mg ANaN3.

Host Species

- Rabbit
- Human, Mouse, Rat,

Reactivity

- WB, IHC, IF, IP, ELISA

Applications

MW

- 22kD (Calculated)
- IgG, Kappa
- 19kD (Observed)

Isotype

Recommended Dilution Ratios

IP

Basic Information

Clonality

Monoclonal

Clone Number ANT0036R

Immunogen Information

Specificity Endogenous

Gene name CLDN1

Protein Name Claudin-1

Organism	Gene ID	UniProt ID
Human	9076 ;	O95832 ;
Mouse	12737 ;	O88551 ;
Rat	65129 ;	P56745 ;

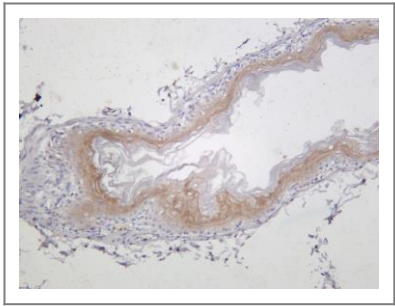
Cellular Localization Membrane

Tissue specificity Strongly expressed in liver and kidney. Expressed in heart, brain, spleen, lung and testis.

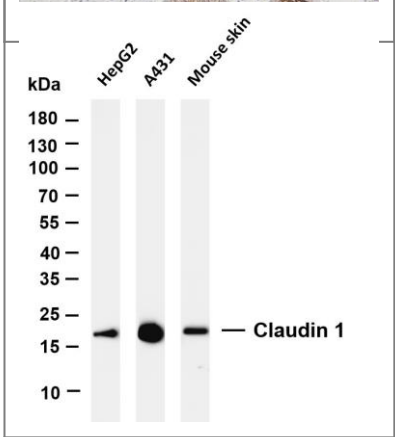
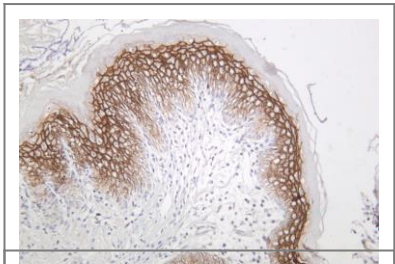
Function Disease:Defects in CLDN1 are the cause of ichthyosis-sclerosing cholangitis neonatal syndrome (NISCH) [MIM:607626]; also called ichthyosis with leukocyte vacuoles alopecia and sclerosing cholangitis (ILVASC). NISCH is a rare autosomal recessive complex ichthyosis syndrome characterized by scalp hypotrichosis, scarring alopecia, vulgar type ichthyosis, and sclerosing cholangitis.,Function:Plays a major role in tight junction-specific obliteration of the intercellular space, through calcium-independent cell-adhesion activity (By similarity). Acts as a co-receptor for HCV entry into hepatic cells.,similarity:Belongs to the claudin family.,subunit:Can form homo- and heteropolymers with other CLDN. Homopolymers interact with CLDN3, but not CLDN2, homopolymers. Directly interacts with TJP1/ZO-1, TJP2/ZO-2 and TJP3/ZO-3. Interacts with MPDZ and INADL (By similarity). May interact with HCV E1 and E2 proteins.,tissue specificity:Strongly expressed in liver and kidney. Expressed in heart, brain, spleen, lung and testis.,

Validation Data

Mouse stomach was stained with anti-Claudin 1 (ANT0036R) rabbit antibody

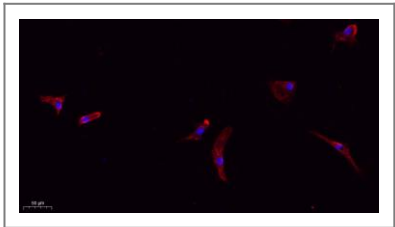
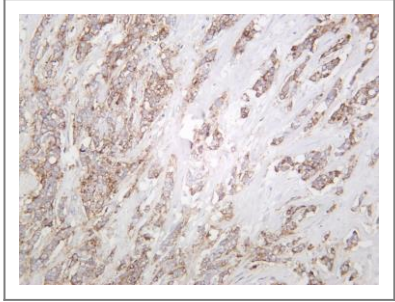


Rat stomach was stained with anti-Claudin 1 (ANT0036R) rabbit antibody



Various whole cell lysates were separated by 4-20% SDS-PAGE, and the membrane was blotted with anti-Claudin 1 (ANT0036R) antibody. The HRPconjugated Goat anti-Rabbit IgG(H + L) antibody was used to detect the antibody. Lane 1: HepG2 Lane 2: A431 Lane 3: Mouse skin Predicted band size: 22kDa Observed band size: 19kDa

Human breast was stained with anti-Claudin 1 (ANT0036R) rabbit antibody



Immunofluorescence analysis of A549. 1,primary Antibody(red) was diluted at 1:200(4°C overnight). 2, Goat Anti Rabbit IgG (H&L) - Alexa Fluor 594 Secondary antibody was diluted at 1:1000(room temperature, 50min).3, Picture B: DAPI(blue) 10min.

For Research use only, not for diagnostics and clinical use
Contact Antagene Inc Tel 1-866-964-2589 Email: info@antageneinc.com