

## ATG7 (ANT0035R) Rabbit mAb

CatalogNo: ANT8198 **Recombinant R**

Formulation: PBS,50%glycerol,0.05%Proclin 300,0.05%BSA  
Quantity : 100 ug/vial

### Host Species

- Rabbit
- Human,Mouse,Rat,

### Reactivity

- WB,IHC,IF,IP,ELISA

### Applications

### MW

- 78kD (Calculated)
  - IgG,Kappa
- 78kD (Observed)

### Isotype

## Recommended Dilution Ratios

IHC 1:200-1:1000

WB 1:1000-1:5000

IF 1:200-1:1000

ELISA 1:5000-1:20000

IP 1:50-1:200,

## Storage

**Storage\*** -15°C to -25°C/1 year(Do not lower than -25°C)

## Basic Information

**Clonality** Monoclonal

**Clone Number** ANT0035R

## Target Information

Endogenous

**Gene name** ATG7 APG7L

**Protein Name** Ubiquitin-like modifier-activating enzyme ATG7 (ATG12-activating enzyme E1 ATG7) (Autophagy-related protein 7) (APG7-like) (hAGP7) (Ubiquitin-activating enzyme E1-like protein)

Organism	Gene ID	UniProt ID
Human	<a href="#">10533</a> ;	<a href="#">O95352</a> ;
Mouse		<a href="#">Q9D906</a> ;
Rat		<a href="#">Q641Y5</a> ;

**Cellular Localization** Cytoplasm

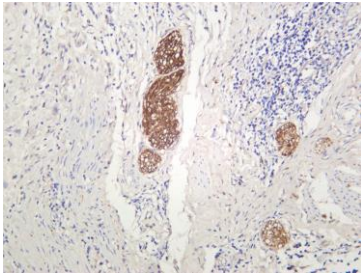
**Tissue specificity** Widely expressed, especially in kidney, liver, lymph nodes and bone marrow.

**Function** Domain:The C-terminal part of the protein is essential for the dimerization and interaction with ATG3 and ATG12.,Function:Functions as an E1 enzyme essential for multisubstrates such as GABARAPL1 and ATG12. Forms intermediate conjugates with GABARAPL1 (GABARAPL2, GABARAP or MAP1ALC3). Formation of the final GABARAPL1-PE conjugate is essential for autophagy.,similarity:Belongs to the ATG7 family.,subunit:Homodimer (By similarity). Interacts with ATG3 and ATG12. The complex, composed of ATG3 and ATG7, plays a role in the conjugation of ATG12 to ATG5.,tissue specificity:Widely expressed, especially in kidney, liver, lymph nodes and bone marrow.,

---

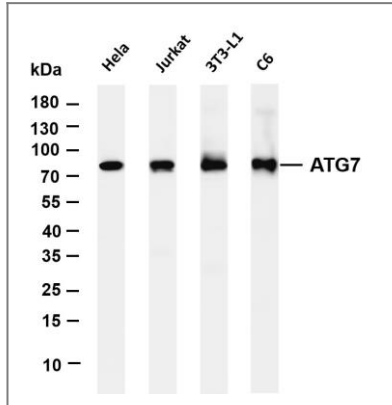
## Validation Data

Human cervical carcinoma was stained with anti-ATG7 (ANT0035R) rabbit antibody



Various whole cell lysates were separated by 4-20% SDS-PAGE, and the membrane was blotted with anti- ATG7 (ANT0035R) antibody. The HRPconjugated Goat anti-Rabbit IgG(H + L) antibody was used to detect the antibody. Lane 1: HeLa Lane 2: Jurkat Lane 3: 3T3-L1 Lane 4: C6 Predicted

band size: 78kDa Observed band size: 78kDa



For Research use only, not for diagnostics and clinical use  
Contact Antagene Inc Tel 1-866-964-2589 Email: [info@antageneinc.com](mailto:info@antageneinc.com)