



Mouse Monoclonal Antibody **ATG7** conjugated to Sepharose Beads

CatalogNo: **ANT8198-M**

Size 200ul

Storage Store at 4 °C for frequent use

Description

This Antagene antibody is immobilized by the covalent reaction of hydrazinonicotinamide-modified antibody with formylbenzamide-modified beads. It is useful for immunoprecipitation.

ATG7 (ANT0035R) Rabbit mAb

Formulation: Each vial contains 1mg/ml Magnetic Bead in PBS, pH 7.2, 0.05mg ANaN3.

Host Species

- Rabbit
- Human, Mouse, Rat,

Reactivity

- WB, IHC, IF, IP, ELISA

Applications

MW

- 78kD (Calculated)
- 78kD (Observed)
- IgG, Kappa

Isotype

Recommended Dilution Ratios

IP

Basic Information

Clonality

Monoclonal

Clone Number ANT0035R

Immunogen Information

Specificity Endogenous

Gene name ATG7 APG7L

Protein Name Ubiquitin-like modifier-activating enzyme ATG7 (ATG12-activating enzyme E1 ATG7) (Autophagy-related protein 7) (APG7-like) (hAGP7) (Ubiquitin-activating enzyme E1-like protein)

Organism	Gene ID	UniProt ID
Human	10533 ;	O95352 ;
Mouse		Q9D906 ;
Rat		Q641Y5 ;

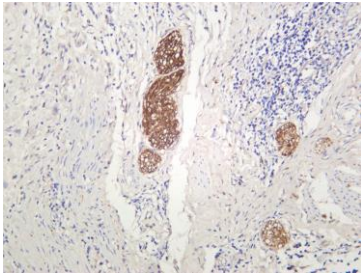
Cellular Localization Cytoplasm

Tissue specificity Widely expressed, especially in kidney, liver, lymph nodes and bone marrow.

Function Domain:The C-terminal part of the protein is essential for the dimerization and interaction with ATG3 and ATG12.,Function:Functions as an E1 enzyme essential for multisubstrates such as GABARAPL1 and ATG12. Forms intermediate conjugates with GABARAPL1 (GABARAPL2, GABARAP or MAP1ALC3). Formation of the final GABARAPL1-PE conjugate is essential for autophagy.,similarity:Belongs to the ATG7 family.,subunit:Homodimer (By similarity). Interacts with ATG3 and ATG12. The complex, composed of ATG3 and ATG7, plays a role in the conjugation of ATG12 to ATG5.,tissue specificity:Widely expressed, especially in kidney, liver, lymph nodes and bone marrow.,

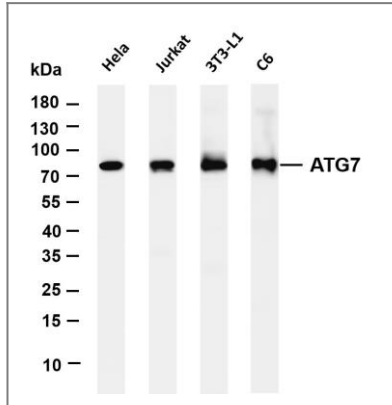
Validation Data

Human cervical carcinoma was stained with anti-ATG7 (ANT0035R) rabbit antibody



Various whole cell lysates were separated by 4-20% SDS-PAGE, and the membrane was blotted with anti- ATG7 (ANT0035R) antibody. The HRPconjugated Goat anti-Rabbit IgG(H + L) antibody was used to detect the antibody. Lane 1: HeLa Lane 2: Jurkat Lane 3: 3T3-L1 Lane 4: C6 Predicted

band size: 78kDa Observed band size: 78kDa



For Research use only, not for diagnostics and clinical use
Contact Antagene Inc Tel 1-866-964-2589 Email: info@antageneinc.com