



Mouse Monoclonal Antibody **p90RSK (phospho Thr359/Ser363)** conjugated to Sepharose Beads

CatalogNo: **ANT8196-M**

Size 200ul

Storage Store at 4 °C for frequent use

#### Description

This Antagene antibody is immobilized by the covalent reaction of hydrazinonicotinamide-modified antibody with formylbenzamide-modified beads. It is useful for immunoprecipitation.

**p90RSK (phospho Thr359/Ser363) (ANT0032R) Rabbit mAb**

Formulation: Each vial contains 1mg/ml Magnetic Bead in PBS, pH 7.2, 0.05mg ANaN3.

#### Host Species

- Rabbit
- Human, Mouse, Rat,

#### Reactivity

- WB, IHC, IF, IP, ELISA

#### Applications

#### MW

- 83kD (Calculated)
  - IgG, Kappa
- 83kD (Observed)

#### Isotype

## Recommended Dilution Ratios

IP

### Basic Information

Clonality

Monoclonal

Clone Number      ANT0032R

Immunogen Information

Specificit   Endogenous

Target Information

Gene name            RPS6KA1  
Protein Name        Ribosomal protein S6 kinase alpha-1

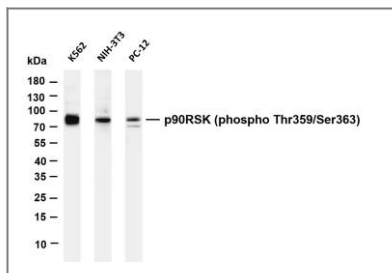
Organism	Gene ID	UniProt ID
Human	<a href="#">6195;</a>	<a href="#">Q15418;</a>
Mouse		<a href="#">P18653;</a>
Rat	<a href="#">81771;</a>	<a href="#">Q63531;</a>

Cellular                    Cytoplasm, Nucleus  
Localization

Tissue specificity   Colon,Epithelium,

Function                    Catalytic activity:ATP + a protein = ADP + a phosphoprotein.,Caution:The sequence shown here is derived from an Ensembl automatic analysis pipeline and should be considered as preliminary data.,cofactor:Magnesium.,enzyme regulation:Activated by multiple phosphorylations on threonine and serine residues.,Function:Serine/threonine kinase that may play a role in mediating the growth-factor and stress induced activation of the transcription factor CREB.,ANTM:Autophosphorylated on Ser-380, as part of the activation process.,similarity:Belongs to the protein kinase superfamily.,similarity:Belongs to the protein kinase superfamily. AGC Ser/Thr protein kinase family. S6 kinase subfamily.,similarity:Contains 1 AGC-kinase C-terminal domain.,similarity:Contains 2 protein kinase domains.,subunit:Forms a complex with either ERK1 or ERK2 in quiescent cells. Transiently dissociates following mitogenic stimulation.,

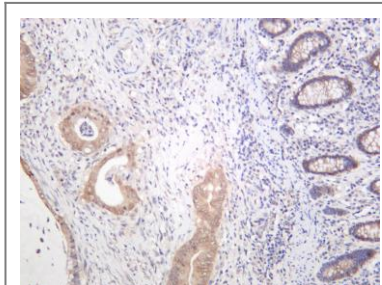
## Validation Data



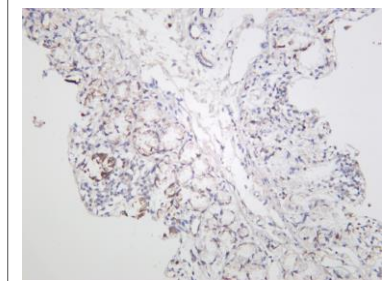
Various whole cell lysates were separated by 4-20% SDS-PAGE, and the membrane was blotted with anti-p90RSK (phospho Thr359/Ser363) (ANT0067R) antibody. The HRP-conjugated Goat anti-Rabbit IgG(H + L) antibody was used to detect the antibody. Lane 1: K562 Lane 2: NIH-3T3

Lane 3: PC-12 Predicted band size: 83kDa Observed band size: 83kDa

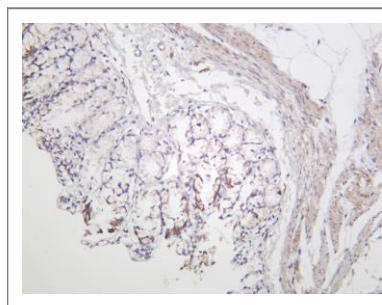
Human colon carcinoma was stained with anti-p90RSK (phospho Thr359/Ser363) rabbit antibody



Mouse colon was stained with anti-p90RSK (phospho Thr359/Ser363) rabbit antibody



Rat colon was stained with anti-p90RSK (phospho Thr359/Ser363) rabbit antibody



For Research use only, not for diagnostics  
and clinical use

Contact Antagene Inc Tel 1-866-964-2589  
Email: [info@antageneinc.com](mailto:info@antageneinc.com)