



Ki67 (ANT0021R) Rabbit mAb

CatalogNo: ANT8189 **Recombinant** 

Formulation: PBS,50%glycerol,0.05%Proclin 300,0.05%BSA
Quantity : 100 ug/vial

Host Species

- Rabbit

MW

- 359kD (Calculated)
- 359kD (Observed)

Reactivity

- Human,Mouse,Rat,

Isotype

- IgG,Kappa

Applications

- WB,IHC,IF,IP,ELISA

Recommended Dilution Ratios

IHC 1:200-1000

WB 1:1000-5000

IF 1:200-1000

ELISA 1:5000-20000

IP 1:50-200

Storage

Storage* -15°C to -25°C/1 year(Do not lower than -25°C)

Basic Information

Clonality Monoclonal

Clone Number ANT0021R

Target Information

Endogenous

Gene nameMKI67

Protein NameKi 67

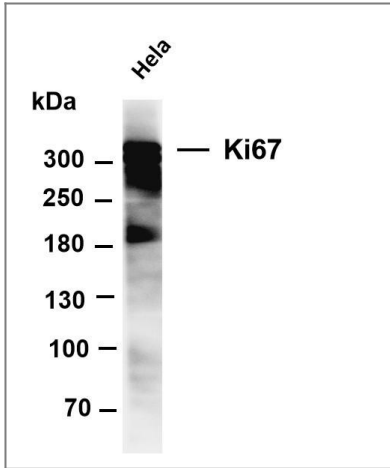
	Organism	Gene ID	UniProt ID
	Human	4288;	P46013;

Cellular
LocalizationNucleus

Tissue specificityNuclear

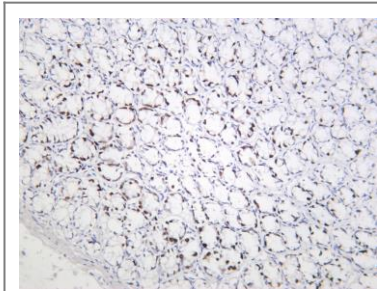
Function developmental stage:Expression of this antigen occurs preferentially during late G1, S, G2 and M phases of the cell cycle, while in cells in G0 phase the antigen cannot be detected.,Function:Thought to be required for maintaining cell proliferation.,online information:Ki-67 entry,similarity:Contains 1 FHA domain.,subcellular location:Predominantly localized in the G1 phase in the perinucleolar region, in the later phases it is also detected throughout the nuclear interior, being predominantly localized in the nuclear matrix. In mitosis, it is present on all chromosomes.,subunit:Interacts with KIF15. Binds through the FHA domain to MKI67IP.,

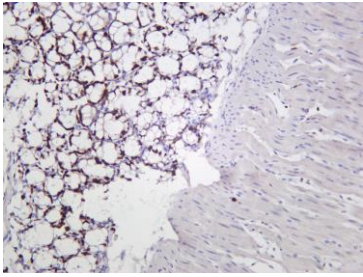
Validation Data



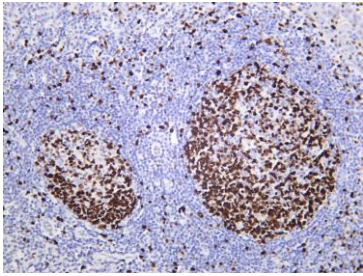
Various whole cell lysates were separated by 4-8% SDS-PAGE, and the membrane was blotted with anti-Ki67 (ANT0021R) antibody. The HRPconjugated Goat anti-Rabbit IgG(H + L) antibody was used to detect the antibody. Lane 1: HeLa Predicted band size: 359kDa
Observed band size: 359kDa

Rat colon was stained with Anti-Ki67 (ANT0021R) rabbit antibody

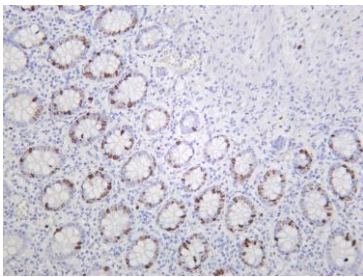




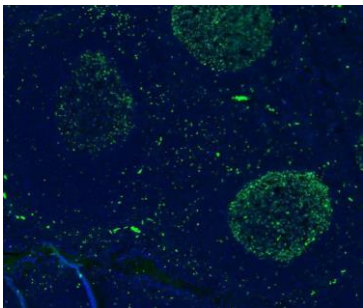
Mouse colon was stained with Anti-Ki67 (ANT0021R) rabbit antibody



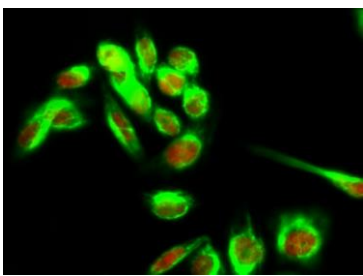
Human tonsil was stained with Anti-Ki67 (ANT0021R) rabbit antibody



Human appendix was stained with Anti-Ki67 (ANT0021R) rabbit antibody



Human tonsil tissue was stained with Anti-Ki67 (ANT0021R) Antibody (green)



Immunofluorescence analysis of HeLa cell. 1, Ki-67 Antibody (red) was diluted at 1:200 (4° overnight). HSP70 Monoclonal Antibody (3G10) (green) was diluted at 1:200 (4° overnight). 2, Goat Anti Rabbit Alexa Fluor 594 Catalog: RS3611 was diluted at 1:1000 (room temperature, 50min). Goat Anti Mouse Alexa Fluor 488 Catalog: RS3208 was diluted at 1:1000 (room temperature, 50min).

For Research use only, not for diagnostics and clinical use
Contact Antagene Inc Tel 1-866-964-2589 Email: info@antageneinc.com