



## Mouse Monoclonal Antibody **Ki67** conjugated to Sepharose Beads

CatalogNo: **ANT8189-M**

Size 200ul

Storage Store at 4 °C for frequent use

### Description

This Antagene antibody is immobilized by the covalent reaction of hydrazinonicotinamide-modified antibody with formylbenzamide-modified beads. It is useful for immunoprecipitation.

### **Ki67 (ANT0021R) Rabbit mAb**

Formulation: Each vial contains 1mg/ml Magnetic Bead in PBS, pH 7.2, 0.05mg ANaN3.

#### Host Species

- Rabbit

#### Reactivity

- Human,Mouse,Rat,

#### Applications

- WB,IHC,IF,IP,ELISA

#### MW

- 359kD (Calculated)
- 359kD (Observed)

#### Isotype

- IgG,Kappa

## Recommended Dilution Ratios

### IP

## Basic Information

**Clonality** Monoclonal

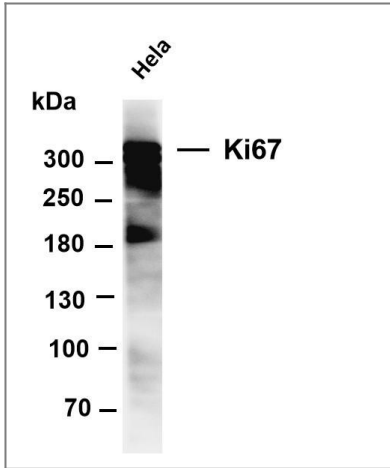
**Clone Number** ANT0021R

# Immunogen Information

Specificity	Endogenous		
Gene name	MKI67		
Protein Name	Ki 67		
Cellular Localization	Organism	Gene ID	UniProt ID
	Human	<a href="#">4288</a> ;	<a href="#">P46013</a> ;
	Nucleus		
Tissue specificity	Nuclear		
Function	developmental stage:Expression of this antigen occurs preferentially during late G1, S, G2 and M phases of the cell cycle, while in cells in G0 phase the antigen cannot be detected.,Function:Thought to be required for maintaining cell proliferation.,online information:Ki-67 entry,similarity:Contains 1 FHA domain.,subcellular location:Predominantly localized in the G1 phase in the perinucleolar region, in the later phases it is also detected throughout the nuclear interior, being predominantly localized in the nuclear matrix. In mitosis, it is present on all chromosomes.,subunit:Interacts with KIF15. Binds through the FHA domain to MKI67IP,		

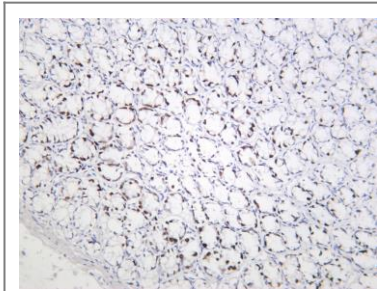
---

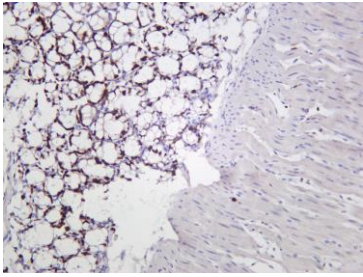
## Validation Data



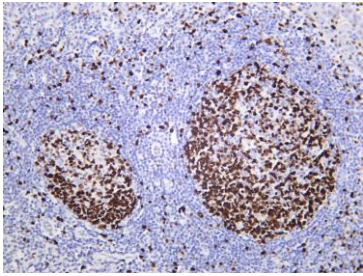
Various whole cell lysates were separated by 4-8% SDS-PAGE, and the membrane was blotted with anti-Ki67 (ANT0021R) antibody. The HRPconjugated Goat anti-Rabbit IgG(H + L) antibody was used to detect the antibody. Lane 1: HeLa Predicted band size: 359kDa  
Observed band size: 359kDa

Rat colon was stained with Anti-Ki67 (ANT0021R) rabbit antibody

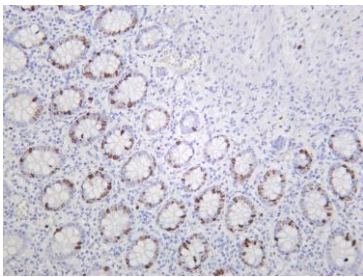




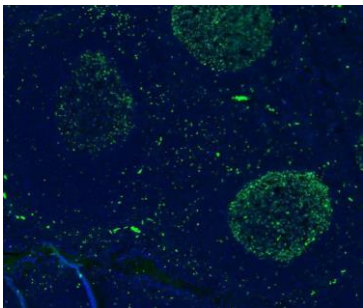
Mouse colon was stained with Anti-Ki67 (ANT0021R) rabbit antibody



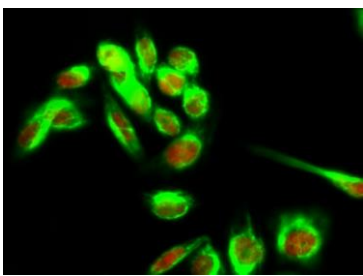
Human tonsil was stained with Anti-Ki67 (ANT0021R) rabbit antibody



Human appendix was stained with Anti-Ki67 (ANT0021R) rabbit antibody



Human tonsil tissue was stained with Anti-Ki67 (ANT0021R) Antibody (green)



Immunofluorescence analysis of HeLa cell. 1, Ki-67 Antibody (red) was diluted at 1:200 (4° overnight). HSP70 Monoclonal Antibody (3G10) (green) was diluted at 1:200 (4° overnight). 2, Goat Anti Rabbit Alexa Fluor 594 Catalog: RS3611 was diluted at 1:1000 (room temperature, 50min). Goat Anti Mouse Alexa Fluor 488 Catalog: RS3208 was diluted at 1:1000 (room temperature, 50min).

For Research use only, not for diagnostics and clinical use  
Contact Antagene Inc Tel 1-866-964-2589 Email: [info@antageneinc.com](mailto:info@antageneinc.com)