



Mouse Monoclonal Antibody **XPB1** conjugated to Sepharose Beads

CatalogNo: **ANT8188-M**

Size 200ul

Storage Store at 4 °C for frequent use

Description

This Antagene antibody is immobilized by the covalent reaction of hydrazinonicotinamide-modified antibody with formylbenzamide-modified beads. It is useful for immunoprecipitation.

XPB1 (ANT0019R) Rabbit mAb

Formulation: Each vial contains 1mg/ml Magnetic Bead in PBS, pH 7.2, 0.05mg ANaN3.

Host Species

- Rabbit

MW

- 29kD (Calculated)
- 35kD,60kD (Observed)

Reactivity

- Human,Mouse,Rat,

Isotype

- IgG,Kappa

Applications

- WB,IHC,IF,IP,ELISA

Recommended Dilution Ratios

IP

Basic Information

Clonality Monoclonal

Clone Number ANT0019R

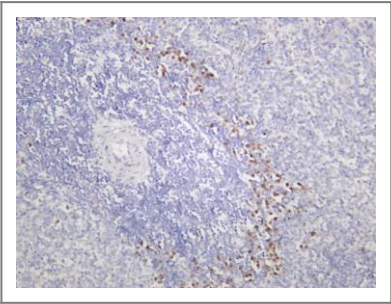
Immunogen Information

Sequence	X-box-binding protein 1
Specificity	Endogenous

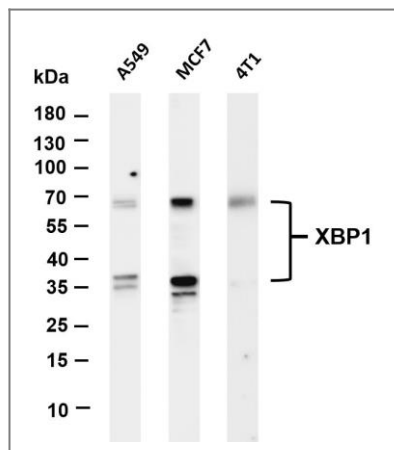
Target Information

Gene name	>>Protein processing in endoplasmic reticulum;>>Non-alcoholic fatty liver disease;>>Alzheimer disease;>>Parkinson disease;>>Amyotrophic lateral sclerosis;>>Spinocerebellar ataxia;>>Pathways of neurodegeneration - multiple diseases;>>Lipid and atherosclerosis		
Protein Name	XBP1		
	Organism	Gene ID	UniProt ID
	Human	7494;	P17861;
	Mouse		Q35426;
Cellular Localization	Nucleus		
Tissue specificity	Expressed in plasma cells in rheumatoid synovium (PubMed:11460154). Over-expressed in primary breast cancer and metastatic breast cancer cells (PubMed:25280941). Isoform 1 and isoform 2 are expressed at higher level in proliferating as compared to confluent quiescent endothelial cells (PubMed:19416856).		
Function	Disease:Genetic variations in XBP1 could be associated with susceptibility to major affective disorder type 7 (MAFD7) [MIM:612371]. Major affective disorders represent a class of mental disorders characterized by a disturbance in mood as their predominant feature.,Function:Transcription factor essential for hepatocyte growth, the differentiation of plasma cells, the immunoglobulin secretion, and the unfolded protein response (UPR). Acts during endoplasmic reticulum stress (ER) by activating unfolded protein response (UPR) target genes via direct binding to the UPR element (UPRE). Binds DNA preferably to the CRE-like element 5'-GATGACGTG[TG]N(3)[AT]T-3', and also to some TPA response elements (TRE). Binds to the HLA DR-alpha promoter. Binds to the Tax-responsive element (TRE) of HTLV-I.,induction:Up-regulated by ATF6 via direct binding to the ERSE in response to endoplasmic reticulum stress.,similarity:Belongs to the bZIP family.,similarity:Contains 1 bZIP domain.,		

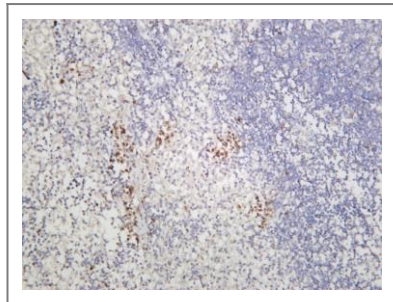
Validation Data



Rat spleen was stained with anti-XBP1 (ANT0019R) rabbit antibody



Various whole cell lysates were separated by 4-20% SDS-PAGE, and the membrane was blotted with anti-XBP1 (ANT0019R) antibody. The HRPconjugated Goat anti-Rabbit IgG(H + L) antibody was used to detect the antibody. Lane 1: A549 Lane 2: MCF7 Lane 3: 4T1
 Predicted band size: 29kDa
 Observed band size: 35, 60kDa



Mouse spleen was stained with anti-XBP1 (ANT0019R) rabbit antibody

For Research use only, not for diagnostics and clinical use
Contact Antagene Inc Tel 1-866-964-2589 Email: info@antageneinc.com