



Mouse Monoclonal Antibody **Rab 5A** conjugated to Sepharose Beads

CatalogNo: **ANT8182-S**

Size 200ul

Storage Store at 4 °C for frequent use

Description

This Antagene antibody is immobilized via covalent binding of primary amino groups to N-hydroxysuccinimide (NHS)-activated sepharose beads. It is useful for immunoprecipitation assays.

Rab 5A (ANT0009R) Rabbit mAb

Formulation: 50% slurry in PBS pH 7.2 with 0.01mg NaN₃ preservative.

Host Species

- Rabbit
- Human, Mouse, Rat,

Reactivity

- WB, IHC, IF, IP, ELISA

Applications

MW

- 24kD (Calculated)
 - IgG, Kappa
- 24kD (Observed)

Isotype

Recommended Dilution Ratios

IP

Basic Information

Clonality Monoclonal

Clone Number ANT0009R

Immunogen Information

| | |
|-------------|----------------------------|
| Sequence | Ras-related protein Rab-5A |
| Specificity | Endogenous |

Target Information

| | |
|-----------|---|
| Gene name | >>Ras signaling pathway;>>Endocytosis;>>Phagosome;>>Vasopressin-regulated water reabsorption;>>Amyotrophic lateral sclerosis;>>Pathways of neurodegeneration - multiple diseases;>>Salmonella infection;>>Amoebiasis;>>Tuberculosis |
|-----------|---|

| | |
|--------------|-------|
| Protein Name | RAB5A |
|--------------|-------|

| Organism | Gene ID | UniProt ID |
|----------|--------------------------|--------------------------|
| Human | 5868 ; | P20339 ; |
| Mouse | 271457 ; | Q9CQD1 ; |

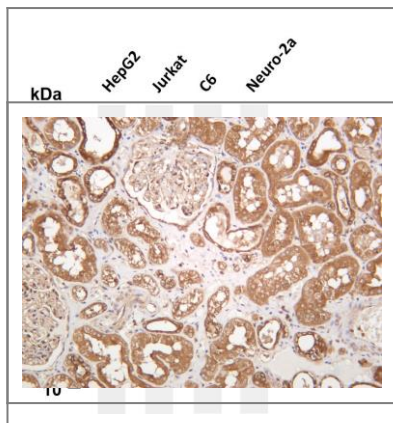
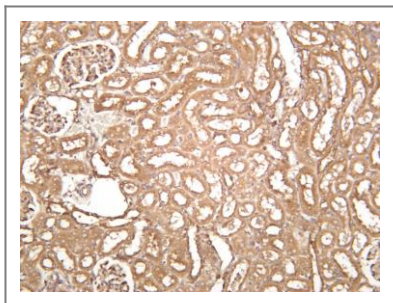
| | |
|-----------------------|---------------------|
| Cellular Localization | Cytoplasm, Membrane |
|-----------------------|---------------------|

| | |
|--------------------|---|
| Tissue specificity | Brain,Cervix,Cervix carcinoma,Placenta, |
|--------------------|---|

| | |
|----------|---|
| Function | enzyme regulation:Regulated by guanine nucleotide exchange factors (GEFs) which promote the exchange of bound GDP for free GTP.,Function:Required for the fusion of plasma membranes and early endosomes.,similarity:Belongs to the small GTPase superfamily. Rab family.,subcellular location:Enriched in stage I melanosomes.,subunit:Binds EEA1. Interacts with RIN1 and GAPVD1, which regulate its pathway, probably by acting as a GEF. Interacts with ALS2CL, UNC84B, ZFYVE20 and RUFY1. Interacts with SGSM1 and SGSM3., |
|----------|---|

Validation Data

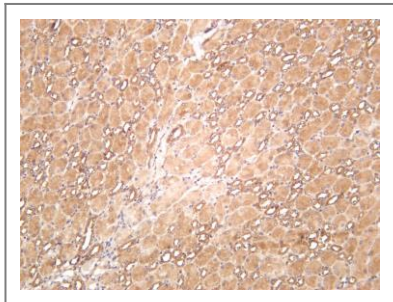
Rat kidney was stained with anti-Rab 5A (ANT0009R) rabbit antibody



Various whole cell lysates were separated by 4-20% SDS-PAGE, and the membrane was blotted with anti-Rab 5A (ANT0009R) antibody. The HRPconjugated Goat anti-Rabbit IgG(H + L) antibody was used to detect the antibody. Lane 1: HepG2 Lane 2: Jurkat Lane 3: C6 Lane 4: Neuro-2a

Predicted band size: 24kDa Observed band size: 24kDa

Human kidney was stained with anti-Rab 5A (ANT0009R) rabbit antibody



Mouse kidney was stained with anti-Rab 5A (ANT0009R) rabbit antibody

For Research use only, not for diagnostics and clinical use
Contact Antagene Inc Tel 1-866-964-2589 Email: info@antageneinc.com