



## Mouse Monoclonal Antibody **Rab 5A** conjugated to Sepharose Beads

CatalogNo: **ANT8182-M**

Size 200ul

Storage Store at 4 °C for frequent use

### Description

This Antagene antibody is immobilized by the covalent reaction of hydrazinonicotinamide-modified antibody with formylbenzamide-modified beads. It is useful for immunoprecipitation.

### **Rab 5A (ANT0009R) Rabbit mAb**

Formulation: Each vial contains 1mg/ml Magnetic Bead in PBS, pH 7.2, 0.05mg ANaN3.

#### Host Species

- Rabbit
- Human, Mouse, Rat,

#### Reactivity

- WB, IHC, IF, IP, ELISA

#### Applications

#### MW

- 24kD (Calculated)
  - IgG, Kappa
- 24kD (Observed)

#### Isotype

## Recommended Dilution Ratios

IP

### Basic Information

**Clonality** Monoclonal

**Clone Number** ANT0009R

## Immunogen Information

Sequence	Ras-related protein Rab-5A
Specificity	Endogenous

---

## Target Information

Gene name	>>Ras signaling pathway;>>Endocytosis;>>Phagosome;>>Vasopressin-regulated water reabsorption;>>Amyotrophic lateral sclerosis;>>Pathways of neurodegeneration - multiple diseases;>>Salmonella infection;>>Amoebiasis;>>Tuberculosis
-----------	-------------------------------------------------------------------------------------------------------------------------------------------------------------------------------------------------------------------------------------

Protein Name	RAB5A
--------------	-------

Organism	Gene ID	UniProt ID
Human	<a href="#">5868</a> ;	<a href="#">P20339</a> ;
Mouse	<a href="#">271457</a> ;	<a href="#">Q9CQD1</a> ;

Cellular Localization	Cytoplasm, Membrane
-----------------------	---------------------

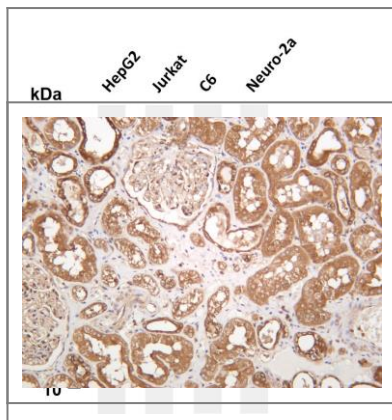
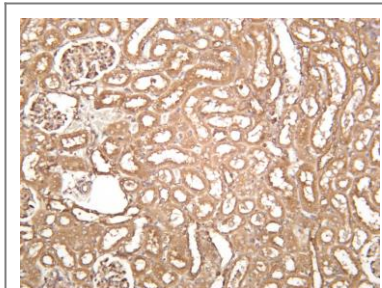
Tissue specificity	Brain,Cervix,Cervix carcinoma,Placenta,
--------------------	-----------------------------------------

Function	enzyme regulation:Regulated by guanine nucleotide exchange factors (GEFs) which promote the exchange of bound GDP for free GTP.,Function:Required for the fusion of plasma membranes and early endosomes.,similarity:Belongs to the small GTPase superfamily. Rab family.,subcellular location:Enriched in stage I melanosomes.,subunit:Binds EEA1. Interacts with RIN1 and GAPVD1, which regulate its pathway, probably by acting as a GEF. Interacts with ALS2CL, UNC84B, ZFYVE20 and RUFY1. Interacts with SGSM1 and SGSM3.,
----------	---------------------------------------------------------------------------------------------------------------------------------------------------------------------------------------------------------------------------------------------------------------------------------------------------------------------------------------------------------------------------------------------------------------------------------------------------------------------------------------------------------------------------------

---

## Validation Data

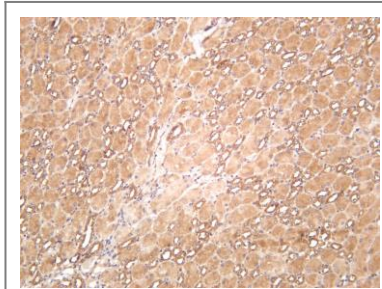
Rat kidney was stained with anti-Rab 5A (ANT0009R) rabbit antibody



Various whole cell lysates were separated by 4-20% SDS-PAGE, and the membrane was blotted with anti-Rab 5A (ANT0009R) antibody. The HRPconjugated Goat anti-Rabbit IgG(H + L) antibody was used to detect the antibody. Lane 1: HepG2 Lane 2: Jurkat Lane 3: C6 Lane 4: Neuro-2a

Predicted band size: 24kDa Observed band size: 24kDa

Human kidney was stained with anti-Rab 5A (ANT0009R) rabbit antibody



Mouse kidney was stained with anti-Rab 5A (ANT0009R) rabbit antibody

For Research use only, not for diagnostics and clinical use  
Contact Antagene Inc Tel 1-866-964-2589 Email: [info@antageneinc.com](mailto:info@antageneinc.com)