



TLS/FUS (ANT0008R) Rabbit mAb

CatalogNo: ANT8181 **Recombinant R**

Formulation: PBS,50%glycerol,0.05%Proclin 300,0.05%BSA
Quantity : 100 ug/vial

Host Species

- Rabbit
- Human,Mouse,Rat,

Reactivity

- WB,IHC,IF,IP,ELISA

Applications

MW

- 53kD (Calculated)
- 70kD (Observed)

Isotype

- IgG,Kappa

Recommended Dilution Ratios

IHC 1:500-1:2000

WB 1:500-1:2000

IF 1:200-1:1000

ELISA 1:5000-1:20000

IP 1:50-1:200,

Storage

Storage* -15°C to -25°C/1 year(Do not lower than -25°C)

Basic Information

Clonality Monoclonal

Clone Number ANT0008R

Immunogen Information

Sequence RNA-binding protein FUS (75 kDa DNA-pairing protein) (Oncogene FUS) (Oncogene TLS)

(POMp75) (Translocated in liposarcoma protein)

Specificity Endogenous

Target Information

Protein Name FUS TLS

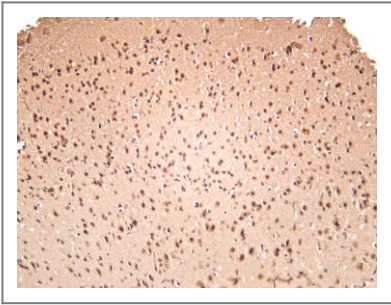
Organism	Gene ID	UniProt ID
Human	2521 ;	P35637 ;
Mouse	233908 ;	P56959 ;

Cellular Localization Nucleus

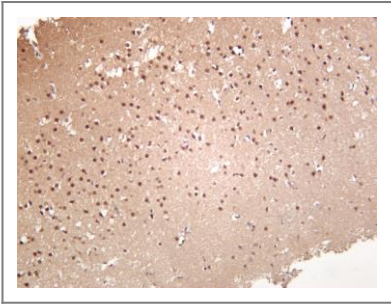
Tissue specificity Ubiquitous.

Function DNA/RNA-binding protein that plays a role in various cellular processes such as transcription regulation, RNA splicing, RNA transport, DNA repair and damage response . Binds to nascent pre-mRNAs and acts as a molecular mediator between RNA polymerase II and U1 small nuclear ribonucleoprotein thereby coupling transcription and splicing . Binds also its own pre-mRNA and autoregulates its expression; this autoregulation mechanism is mediated by non-sense-mediated decay . Plays a role in DNA repair mechanisms by promoting D-loop formation and homologous recombination during DNA double-strand break repair . In neuronal cells, plays crucial roles in dendritic spine formation and stability, RNA transport, mRNA stability and synaptic homeostasis (By similarity).

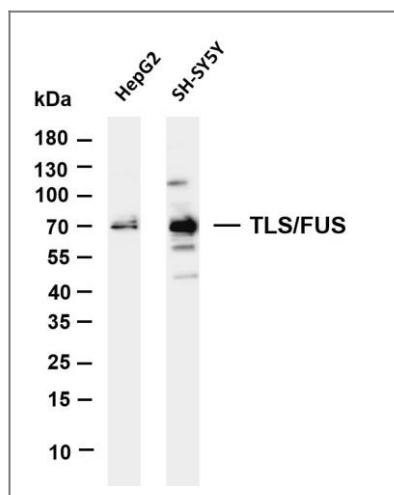
Validation Data



Mouse brain was stained with anti-TLS/FUS (ANT0008R) rabbit antibody



Rat brain was stained with anti-TLS/FUS (ANT0008R) rabbit antibody



Various whole cell lysates were separated by 4-20% SDS-PAGE, and the membrane was blotted with anti-TLS/FUS (ANT0008R) antibody. The HRPconjugated Goat anti-Rabbit IgG(H + L) antibody was used to detect the antibody. Lane 1: HepG2 Lane 2: SH-SY5Y Predicted band size: 53kDa
Observed band size: 70kDa

For Research use only, not for diagnostics and clinical use
Contact Antagene Inc Tel 1-866-964-2589 Email: info@antageneinc.com