



Mouse Monoclonal Antibody **Paxillin** conjugated to Sepharose Beads

CatalogNo: **ANT8177-S**

Size 200ul

Storage Store at 4 °C for frequent use

Description

This Antagene antibody is immobilized via covalent binding of primary amino groups to N-hydroxysuccinimide (NHS)-activated sepharose beads. It is useful for immunoprecipitation assays.

Paxillin (ANT0003R) Rabbit mAb

Formulation: 50% slurry in PBS pH 7.2 with 0.01mg NaN₃ preservative.

Host Species

- Rabbit
- Human, Mouse, Rat,

Reactivity

- WB, IHC, IF, IP, ELISA

Applications

MW

- 68kD (Calculated)
- 68kD (Observed)

Isotype

- IgG, Kappa

Recommended Dilution Ratios

IP

Basic Information

Clonality

Monoclonal

Clone Number ANT0003R

Immunogen Information

Specificity Endogenous

Gene name PXN

Protein Name Paxillin

Organism	Gene ID	UniProt ID
Human	5829;	P49023;
Mouse	19303;	Q8VI36;
Rat	360820;	Q66H76;

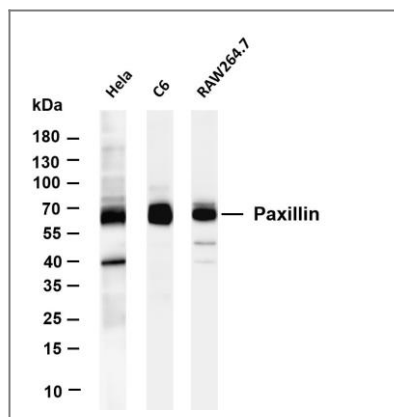
Cellular Localization Cytoplasm

Tissue specificity Brain,Epithelium,Lung,Placenta,T-cell,Uterus,

Function Function:Cytoskeletal protein involved in actin-membrane attachment at sites of cell adhesion to the extracellular matrix (focal adhesion).,ANTM:Phosphorylated on tyrosine residues during integrin-mediated cell adhesion, embryonic development, fibroblast transformation and following stimulation of cells by mitogens.,similarity:Belongs to the paxillin family.,similarity:Contains 3 LIM zinc-binding domains.,similarity:Contains 4 LIM zinc-binding domains.,subunit:Binds in vitro to vinculin as well as to the SH3 domain of cSRC and, when tyrosine phosphorylated, to the SH2 domain of V-CRK. Isoform beta binds to focal adhesion kinase but weakly to vinculin. Isoform gamma binds to vinculin but only weakly to focal adhesion kinase. Interacts with GIT1, NUDT16L1/SDOS, PARVA and TGFB1I1. Component of cytoplasmic complexes, which also contain GIT1, ARHGEF6 and PAK1 (By similarity). Binds ASAP2. Interacts with unphosphorylated ITGA4. Interacts with RNF5.,

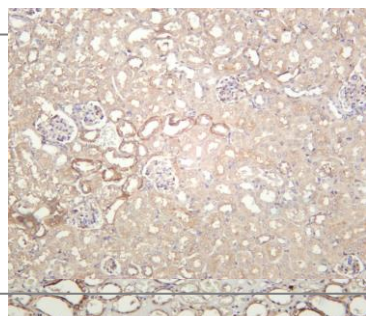


Validation Data

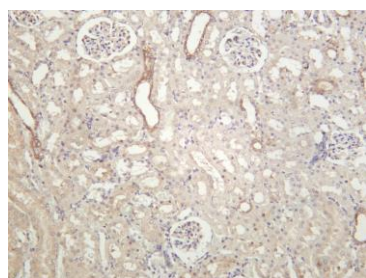


Various whole cell lysates were separated by 4-20% SDS-PAGE, and the membrane was blotted with anti-Paxillin (ANT0003R) antibody. The HRPconjugated Goat anti-Rabbit IgG(H + L) antibody was used to detect the antibody. Lane 1: HeLa Lane 2: C6 Lane 3: RAW264.7 Predicted band size:

68kDa Observed band size: 68kDa



Human kidney was stained with anti-Paxillin (ANT0003R) rabbit antibody
Mouse kidney was stained with anti-Paxillin (ANT0003R) rabbit antibody



Rat kidney was stained with anti-Paxillin (ANT0003R) rabbit antibody

For Research use only, not for diagnostics and clinical use
Contact Antagene Inc Tel 1-866-964-2589 Email: info@antageneinc.com