



## Mouse Monoclonal Antibody **Paxillin** conjugated to Sepharose Beads

CatalogNo: **ANT8177-M**

Size 200ul

Storage Store at 4 °C for frequent use

### Description

This Antagene antibody is immobilized by the covalent reaction of hydrazinonicotinamide-modified antibody with formylbenzamide-modified beads. It is useful for immunoprecipitation.

**Paxillin (ANT0003R) Rabbit mAb**

Formulation: Each vial contains 1mg/ml Magnetic Bead in PBS, pH 7.2, 0.05mg ANaN3.

#### Host Species

- Rabbit
- Human, Mouse, Rat,

#### Reactivity

- WB, IHC, IF, IP, ELISA

#### Applications

#### MW

- 68kD (Calculated)
  - IgG, Kappa
- 68kD (Observed)

#### Isotype

## Recommended Dilution Ratios

### IP

## Basic Information

#### Clonality

Monoclonal

Clone Number      ANT0003R

Immunogen Information

Specificity      Endogenous

Gene name      PXN

Protein Name      Paxillin

Organism	Gene ID	UniProt ID
Human	<a href="#">5829</a> ;	<a href="#">P49023</a> ;
Mouse	<a href="#">19303</a> ;	<a href="#">Q8VI36</a> ;
Rat	<a href="#">360820</a> ;	<a href="#">Q66H76</a> ;

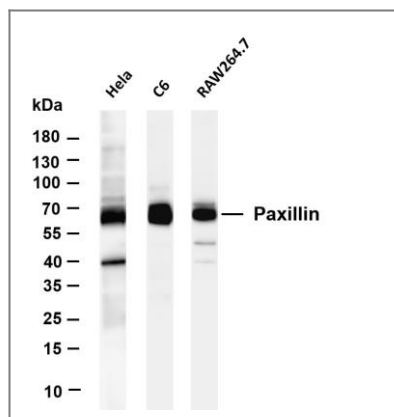
Cellular Localization      Cytoplasm

Tissue specificity Brain,Epithelium,Lung,Placenta,T-cell,Uterus,

**Function**      Function:Cytoskeletal protein involved in actin-membrane attachment at sites of cell adhesion to the extracellular matrix (focal adhesion).,ANTM:Phosphorylated on tyrosine residues during integrin-mediated cell adhesion, embryonic development, fibroblast transformation and following stimulation of cells by mitogens.,similarity:Belongs to the paxillin family.,similarity:Contains 3 LIM zinc-binding domains.,similarity:Contains 4 LIM zinc-binding domains.,subunit:Binds in vitro to vinculin as well as to the SH3 domain of cSRC and, when tyrosine phosphorylated, to the SH2 domain of V-CRK. Isoform beta binds to focal adhesion kinase but weakly to vinculin. Isoform gamma binds to vinculin but only weakly to focal adhesion kinase. Interacts with GIT1, NUDT16L1/SDOS, PARVA and TGFB1I1. Component of cytoplasmic complexes, which also contain GIT1, ARHGEF6 and PAK1 (By similarity). Binds ASAP2. Interacts with unphosphorylated ITGA4. Interacts with RNF5.,

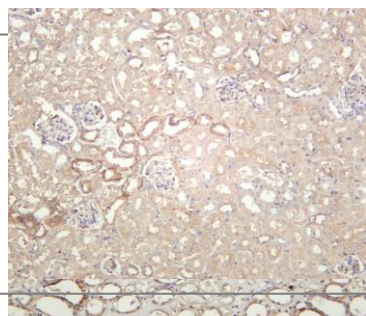


## Validation Data

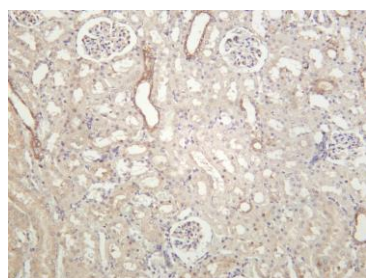


Various whole cell lysates were separated by 4-20% SDS-PAGE, and the membrane was blotted with anti-Paxillin (ANT0003R) antibody. The HRPconjugated Goat anti-Rabbit IgG(H + L) antibody was used to detect the antibody. Lane 1: HeLa Lane 2: C6 Lane 3: RAW264.7 Predicted band size:

68kDa Observed band size: 68kDa



Human kidney was stained with anti-Paxillin (ANT0003R) rabbit antibody  
Mouse kidney was stained with anti-Paxillin (ANT0003R) rabbit antibody



Rat kidney was stained with anti-Paxillin (ANT0003R) rabbit antibody

For Research use only, not for diagnostics and clinical use  
Contact Antagene Inc Tel 1-866-964-2589 Email: [info@antageneinc.com](mailto:info@antageneinc.com)