



## Mouse Monoclonal Antibody **Bax** conjugated to Sepharose Beads

CatalogNo: **ANT8175-M**

Size 200ul

Storage Store at 4 °C for frequent use

### Description

This Antagene antibody is immobilized by the covalent reaction of hydrazinonicotinamide-modified antibody with formylbenzamide-modified beads. It is useful for immunoprecipitation.

### **Bax (ANT0001R) Rabbit mAb**

Formulation: Each vial contains 1mg/ml Magnetic Bead in PBS, pH 7.2, 0.05mg ANaN3.

#### Host Species

- Rabbit
- Human, Mouse, Rat,

#### Reactivity

- WB, IHC, IF, IP, ELISA

#### Applications

#### MW

- 21kD (Calculated)
  - IgG, Kappa
- 21kD (Observed)

#### Isotype

## **Recommended Dilution Ratios**

Basic Information

Clonality	Monoclonal
Clone Number	ANT0001R

Immunogen Information

Specificity Endogenous

Gene name BAX

Protein Name Apoptosis regulator BAX

Organism	Gene ID	UniProt ID
Human	<a href="#">581</a> ;	<a href="#">Q07812</a> ;
Mouse	<a href="#">12028</a> ;	<a href="#">Q07813</a> ;
Rat		<a href="#">Q63690</a> ;

Cellular Localization Cytoplasm, Nuclear

**Tissue specificity** Expressed in a wide variety of tissues. Isoform Psi is found in glial tumors. Isoform Alpha is expressed in spleen, breast, ovary, testis, colon and brain, and at low levels in skin and lung. Isoform Sigma is expressed in spleen, breast, ovary, testis, lung, colon, brain and at low levels in skin. Isoform Alpha and isoform Sigma are expressed in pro-myelocytic leukemia, histiocytic lymphoma, Burkitt's lymphoma, T-cell lymphoma, lymphoblastic leukemia, breast adenocarcinoma, ovary adenocarcinoma, prostate carcinoma, prostate adenocarcinoma, lung carcinoma, epidermoid carcinoma, small cell lung carcinoma and colon adenocarcinoma cell lines.

---

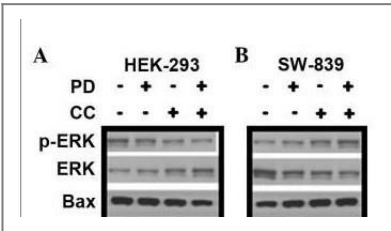
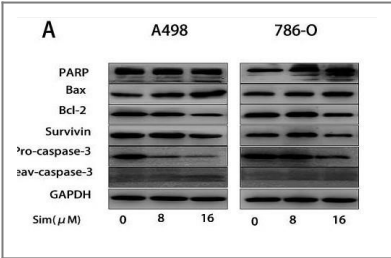
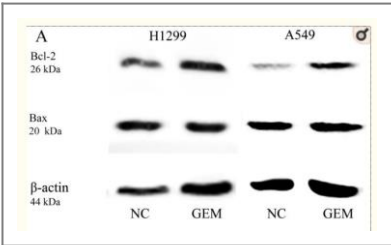
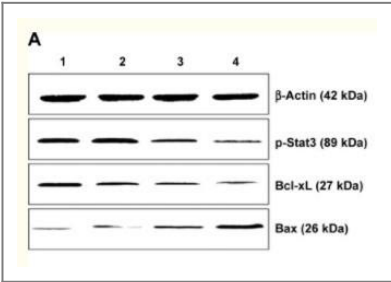
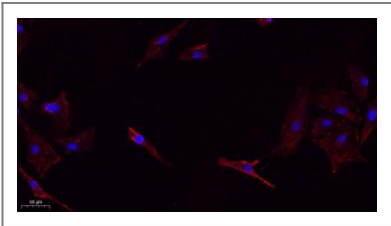
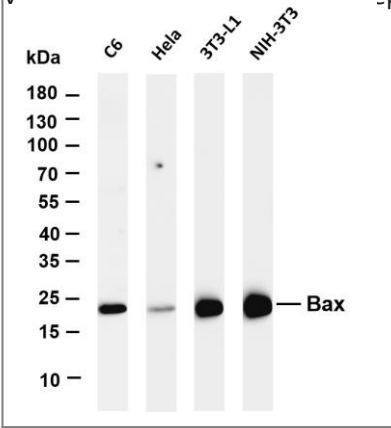
**Function**

Disease: Defects in BAX are found in some cell lines from hematopoietic malignancies as T-cell acute lymphoblastic leukemia, Burkitt lymphoma, and plasmacytoma. Domain: Intact BH3 motif is required by BIK, BID, BAK, BAD and BAX for their pro-apoptotic activity and for their interaction with anti-apoptotic members of the Bcl-2 family. Function: Accelerates programmed cell death by binding to, and antagonizing the apoptosis repressor BCL2 or its adenovirus homolog E1B 19k protein. Induces the release of cytochrome c, activation of CASP3, and thereby apoptosis. Similarity: Belongs to the Bcl-2 family. Subcellular location: Colocalizes with 14-3-3 proteins in the cytoplasm. Under stress conditions, redistributes to the mitochondrion membrane through the release from JNK-phosphorylated 14-3-3 proteins. Subunit: Homodimer. Forms heterodimers with BCL2, E1B 19K protein, BCL2L1 isoform Bcl-X(L), MCL1 and A1. Interacts with SH3GLB1 and HN. Interacts with SFN and YWHAZ; the interaction occurs in the cytoplasm. Under stress conditions, JNK-mediated phosphorylation of SFN and YWHAZ, releases BAX to mitochondria. Isoform Sigma interacts with BCL2A1 and BCL2L1 isoform Bcl-X(L). Tissue specificity: Expressed in a wide variety of tissues. Isoform Psi is found in glial tumors. Isoform Alpha is expressed in spleen, breast, ovary, testis, colon and brain, and at low levels in skin and lung. Isoform Sigma is expressed in spleen, breast, ovary, testis, lung, colon, brain and at low levels in skin. Isoform Alpha and isoform Sigma are expressed in pro-myelocytic leukemia, histiocytic lymphoma, Burkitt's lymphoma, T-cell lymphoma, lymphoblastic leukemia, breast adenocarcinoma, ovary adenocarcinoma, prostate carcinoma, prostate adenocarcinoma, lung carcinoma, epidermoid carcinoma, small cell lung carcinoma and colon adenocarcinoma cell lines.

---



Western blot analysis of Bax expression in various cell lines separated by 4-20% SDS-PAGE, and the membrane was blotted with anti-Bax (ANT0001R)



antibody. The HRPconjugated Goat anti-Rabbit IgG(H + L) antibody was used to detect the antibody. Lane 1: C6 Lane 2: Hela Lane 3: 3T3-L1 Lane 4: NIH-3T3 Predicted band size: 21kDa Observed band size: 21kDa

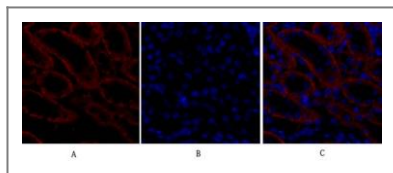
Immunofluorescence analysis of A549. 1,primary Antibody(red) was diluted at 1:200(4°C overnight). 2, Goat Anti Rabbit IgG (H&L) - Alexa Fluor 594 Secondary antibody was diluted at 1:1000(room temperature, 50min).3, Picture B: DAPI(blue) 10min.

Tang, Qiusha, et al. "Combination of PEI-MnO<sub>2</sub>, ZnO, Fe<sub>3</sub>O<sub>4</sub> nanoparticles and pHsp 70-HSV-TK/GCV with magnet-induced heating for treatment of hepatoma." *International journal of nanomedicine* 10 (2015): 7129.

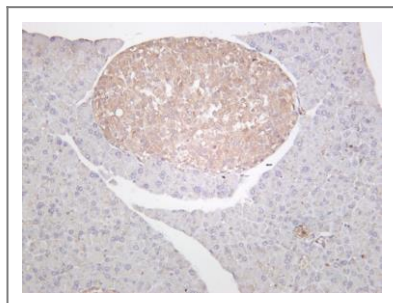
Hu, Bi-Dan, et al. "Specific inhibitor of Notch-3 enhances the sensitivity of NSCLC cells to gemcitabine." *Oncology reports* 40.1 (2018): 155-164.

Fang, Zhiqing, et al. "Simvastatin inhibits renal cancer cell growth and metastasis via AKT/mTOR, ERK and JAK2/STAT3 pathway." *PloS one* 8.5 (2013): e62823.

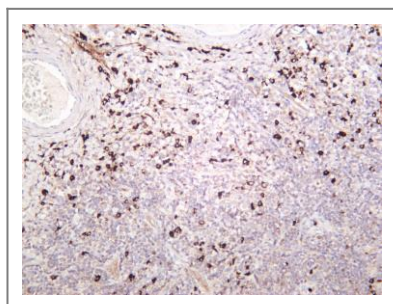
Chen, Xiao-Meng, et al. "Chelerythrine chloride induces apoptosis in renal cancer HEK-293 and SW-839 cell lines." *Oncology letters* 11.6 (2016): 3917-3924.



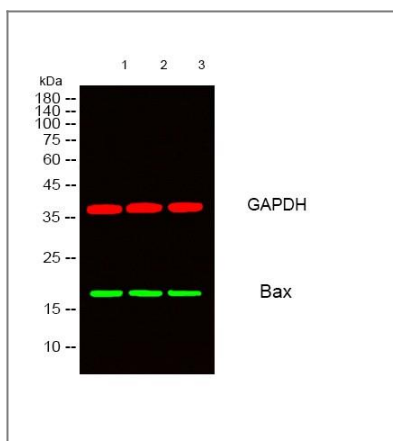
Immunofluorescence analysis of mouse-kidney tissue. 1, Bax Antibody (red) was diluted at 1:200 (4°C, overnight). 2, Cy3 labeled Secondary antibody was diluted at 1:300 (room temperature, 50 min). 3, Picture B: DAPI (blue) 10 min. Picture A: Target. Picture B: DAPI. Picture C: merge of A+B



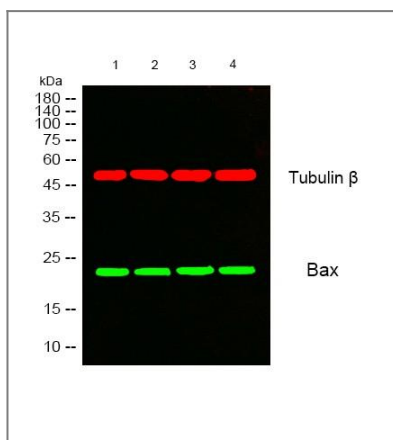
Mouse pancreas was stained with anti-Bax (ANT0001R) rabbit antibody



Human tonsil was stained with anti-Bax (ANT0001R) rabbit antibody

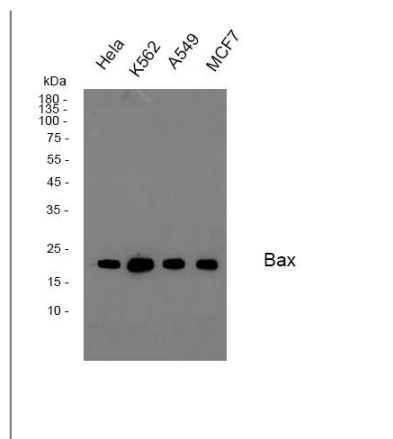


Western blot analysis of lysates from 1) HeLa, 2) MCF-7, 3) 3T3 cells, (Green) primary antibody was diluted at 1:1000, 4°C over night, secondary antibody (cat:RS23920) was diluted at 1:10000, 37°C 1 hour. (Red) GAPDH Monoclonal Antibody (2B8) (cat:YM3029) antibody was diluted at 1:5000 as loading control, 4°C over night, secondary antibody (cat:RS23710) was diluted at 1:10000, 37°C 1 hour.



Western blot analysis of lysates from 1) HeLa, 2) MCF7, 3) k562, 4) A549 cells, (Green) primary antibody was diluted at 1:1000, 4°C over night, secondary antibody (cat:RS23920) was diluted at 1:10000, 37°C 1 hour. (Red) Tubulin β Monoclonal Antibody (5G3) (cat:YM3030) antibody was diluted at

1:5000 as loading control, 4° over night, secondary antibody(cat:RS23710)was diluted at 1:10000, 37° 1hour.



Western blot analysis of Bax Antibody, using HeLa, MCF7, K562, A549 cell, 4° over night, secondary antibody(cat: RS0002 was diluted at 1:10000, 37°

1hour.

For Research use only, not for diagnostics and clinical use  
Contact Antagene Inc Tel 1-866-964-2589 Email: [info@antageneinc.com](mailto:info@antageneinc.com)