



MMP3 (ANT0092R) Rabbit mAb

CatalogNo: ANT8168 **Recombinant** 

Formulation: PBS,50%glycerol,0.05%Proclin 300,0.05%BSA
Quantity : 100 ug/vial

Host Species

- Rabbit
- Human,Mouse,Rat,

Reactivity

- WB,IHC,IF,IP,ELISA

Applications

MW

- 54kD (Calculated)
 - IgG,Kappa
- 54kD (Observed)

Isotype

Recommended Dilution Ratios

IHC 1:200-1:1000

WB 1:1000-1:5000

IF 1:200-1:1000

ELISA 1:5000-1:20000

IP 1:50-1:200,

Storage

Storage* -15°C to -25°C/1 year(Do not lower than -25°C)

Basic Information

Clonality Monoclonal

Clone Number ANT0092R

Endogenous

Target Information

Gene nameMMP3

Protein NameStromelysin-1

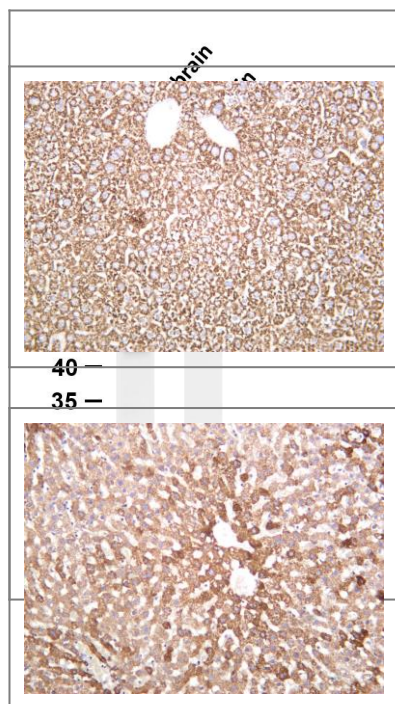
Organism	Gene ID	UniProt ID
Human	4314;	P08254;
Mouse	17392;	P28862;
Rat		P03957;

Cellular
LocalizationCytoplasm

Tissue specificityFibroblast,Lung,Synovium,

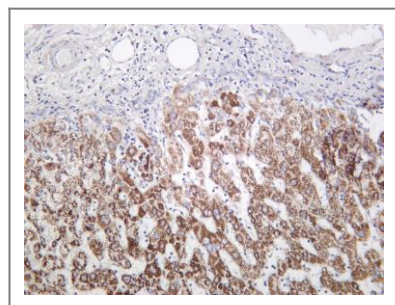
FunctionCatalytic activity:Preferential cleavage where P1', P2' and P3' are hydrophobic residues.,cofactor:Binds 2 zinc ions per subunit.,cofactor:Binds 4 calcium ions per subunit.,Domain:The conserved cysteine present in the cysteine-switch motif binds the catalytic zinc ion, thus inhibiting the enzyme. The dissociation of the cysteine from the zinc ion upon the activation-peptide release activates the enzyme.,Function:Can degrade fibronectin, laminin, gelatins of type I, III, IV, and V; collagens III, IV, X, and IX, and cartilage proteoglycans. Activates procollagenase.,similarity:Belongs to the peptidase M10A family.,similarity:Contains 4 hemopexin-like domains.,

Validation Data

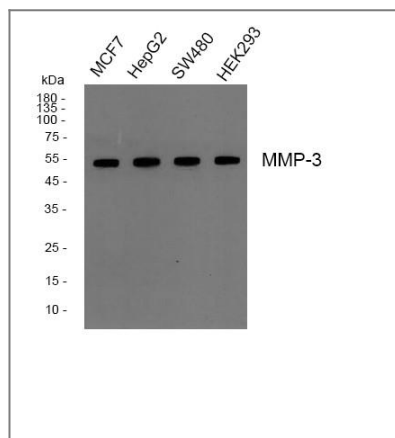


Various whole cell lysates were separated by 4-20% SDS-PAGE, and the membrane was blotted with anti-MMP3 (ANT0092R) antibody. The HRPconjugated Goat anti-Rabbit IgG(H + L) antibody was used to detect the antibody. Lane 1: Mouse brain Lane 2: Rat brain Predicted band size: 54kDa Observed band size: 54kDa
Mouse liver was stained with anti-MMP3 (ANT0092R) rabbit antibody

Rat liver was stained with anti-MMP3 (ANT0092R) rabbit antibody



Human liver was stained with anti-MMP3 (ANT0092R) rabbit antibody



Western blot analysis of MMP-3 Antibody, using HepG2, MCF7, SW480, HEK293 cell, 4° over night, secondary antibody(cat: RS0002 was diluted at 1:10000, 37° 1 hour.

For Research use only, not for diagnostics and clinical use
Contact Antagene Inc Tel 1-866-964-2589 Email: info@antageneinc.com