



Mouse Monoclonal Antibody **MMP3** conjugated to Sepharose Beads

CatalogNo: **ANT8168-S**

Size 200ul

Storage Store at 4 °C for frequent use

Description

This Antagene antibody is immobilized via covalent binding of primary amino groups to N-hydroxysuccinimide (NHS)-activated sepharose beads. It is useful for immunoprecipitation assays.

MMP3 (ANT0092R) Rabbit mAb

Formulation: 50% slurry in PBS pH 7.2 with 0.01mg NaN₃ preservative.

Host Species

- Rabbit
- Human, Mouse, Rat,

Reactivity

- WB, IHC, IF, IP, ELISA

Applications

MW

- 54kD (Calculated)
- IgG, Kappa
- 54kD (Observed)

Isotype

Recommended Dilution Ratios

IP

Basic Information

Clonality	Monoclonal
Clone Number	ANT0092R

Immunogen Information

Specificity Endogenous

Target Information

Gene name MMP3

Protein Name Stromelysin-1

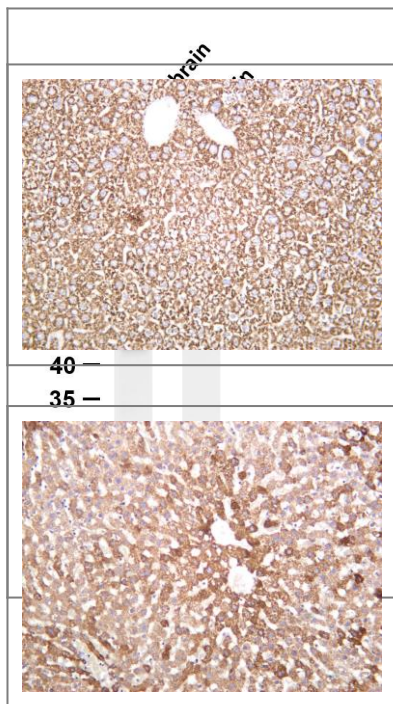
Organism	Gene ID	UniProt ID
Human	4314;	P08254;
Mouse	17392;	P28862;
Rat		P03957;

Cellular Cytoplasm
Localization

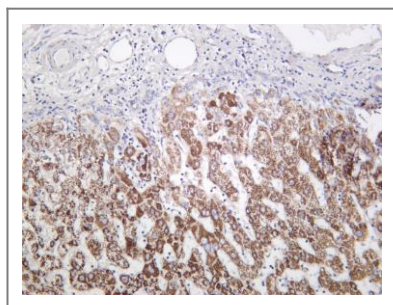
Tissue specificity Fibroblast,Lung,Synovium,

Function Catalytic activity:Preferential cleavage where P1', P2' and P3' are hydrophobic residues.,cofactor:Binds 2 zinc ions per subunit.,cofactor:Binds 4 calcium ions per subunit.,Domain:The conserved cysteine present in the cysteine-switch motif binds the catalytic zinc ion, thus inhibiting the enzyme. The dissociation of the cysteine from the zinc ion upon the activation-peptide release activates the enzyme.,Function:Can degrade fibronectin, laminin, gelatins of type I, III, IV, and V; collagens III, IV, X, and IX, and cartilage proteoglycans. Activates procollagenase.,similarity:Belongs to the peptidase M10A family.,similarity:Contains 4 hemopexin-like domains.,

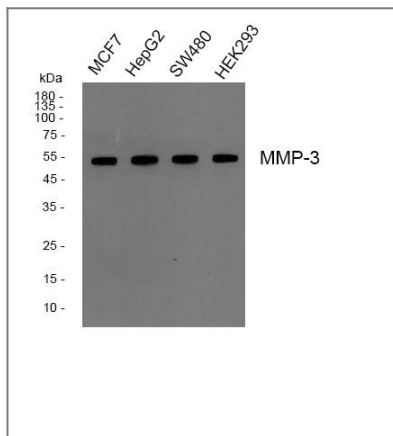
Validation Data



Various whole cell lysates were separated by 4-20% SDS-PAGE, and the membrane was blotted with anti-MMP3 (ANT0092R) antibody. The HRPconjugated Goat anti-Rabbit IgG(H + L) antibody was used to detect the antibody. Lane 1: Mouse brain Lane 2: Rat brain Predicted band size: 54kDa Observed band size: 54kDa
Mouse liver was stained with anti-MMP3 (ANT0092R) rabbit antibody



Human liver was stained with anti-MMP3 (ANT0092R) rabbit antibody



Western blot analysis of MMP-3 Antibody, using HepG2, MCF7, SW480, HEK293 cell, 4° over night, secondary antibody(cat: RS0002 was diluted at 1:10000, 37° 1 hour.

For Research use only, not for diagnostics and clinical use
Contact Antagene Inc Tel 1-866-964-2589 Email: info@antageneinc.com