

## EpCAM (ANT0090R) Rabbit mAb

CatalogNo: ANT8166 **Recombinant** 

Formulation: PBS,50%glycerol,0.05%Proclin 300,0.05%BSA  
Quantity : 100 ug/vial

### Host Species

- Rabbit
- Human,Mouse,Rat,

### Reactivity

- WB,IHC,IF,IP,ELISA

### Applications

### MW

- 35kD (Calculated)
  - IgG,Kappa
- 40kD (Observed)

### Isotype

## Recommended Dilution Ratios

IHC 1:200-1:1000

WB 1:1000-1:5000

IF 1:200-1:1000

ELISA 1:5000-1:20000

IP 1:50-1:200,

## Storage

**Storage\*** -15°C to -25°C/1 year(Do not lower than -25°C)

## Basic Information

**Clonality** Monoclonal

**Clone Number** ANT0090R

## Immunogen Information

**Sequence** Epithelial cell adhesion molecule

Specificity Endogenous

## Target Information

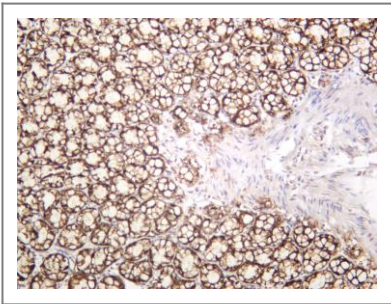
Protein Name EPCAM

Organism	Gene ID	UniProt ID
Human	<a href="#">4072;</a>	<a href="#">P16422;</a>
Mouse	<a href="#">17075;</a>	<a href="#">Q99JW5;</a>

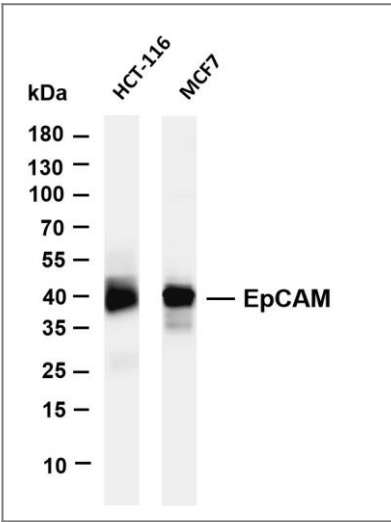
Cellular Localization Membrane

**Tissue specificity** Highly and selectively expressed by undifferentiated rather than differentiated embryonic stem cells (ESC). Levels rapidly diminish as soon as ESC's differentiate (at protein levels). Expressed in almost all epithelial cell membranes but not on mesodermal or neural cell membranes. Found on the surface of adenocarcinoma.

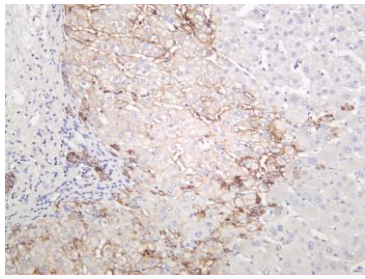
## Validation Data



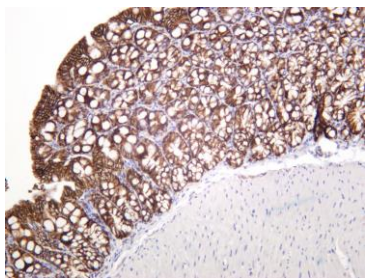
Rat colon was stained with anti-EpCAM (ANT0090R) rabbit antibody



Various whole cell lysates were separated by 4-20% SDS-PAGE, and the membrane was blotted with anti-EpCAM (ANT0090R) antibody. The HRPconjugated Goat anti-Rabbit IgG(H + L) antibody was used to detect the antibody. Lane 1: HCT-116 Lane 2: MCF7 Predicted band size: 35kDa Observed band size: 40kDa



Human liver was stained with anti-EpCAM (ANT0090R) rabbit antibody



Mouse colon was stained with anti-EpCAM (ANT0090R) rabbit antibody

For Research use only, not for diagnostics and clinical use  
Contact Antagene Inc Tel 1-866-964-2589 Email: [info@antageneinc.com](mailto:info@antageneinc.com)