



Mouse Monoclonal Antibody **EpCAM** conjugated to Sepharose Beads

CatalogNo: **ANT8166-S**

Size 200ul

Storage Store at 4 °C for frequent use

Description

This Antagene antibody is immobilized via covalent binding of primary amino groups to N-hydroxysuccinimide (NHS)-activated sepharose beads. It is useful for immunoprecipitation assays.

EpCAM (ANT0090R) Rabbit mAb

Formulation: 50% slurry in PBS pH 7.2 with 0.01mg NaN₃ preservative.

Host Species

- Rabbit
- Human, Mouse, Rat,

Reactivity

- WB, IHC, IF, IP, ELISA

Applications

MW

- 35kD (Calculated)
- 40kD (Observed)

Isotype

- IgG, Kappa

Recommended Dilution Ratios

IP

Basic Information

Clonality	Monoclonal
-----------	------------

Clone Number	ANT0090R
--------------	----------

Immunogen Information

Sequence Epithelial cell adhesion molecule

Specificity Endogenous

Target Information

Protein Name EPCAM

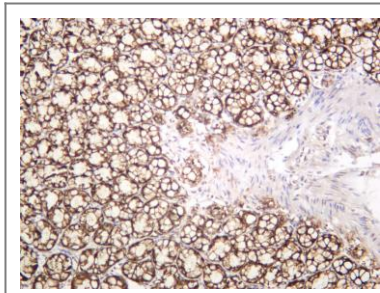
Organism	Gene ID	UniProt ID
Human	4072 ;	P16422 ;
Mouse	17075 ;	Q99JW5 ;

**Cellular
Localization** Membrane

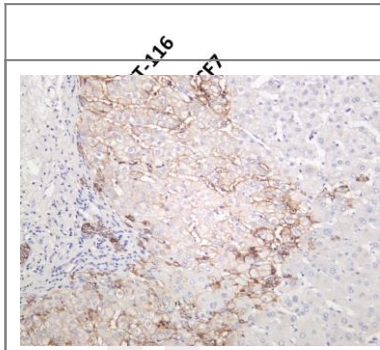
Tissue specificity Highly and selectively expressed by undifferentiated rather than differentiated embryonic stem cells (ESC). Levels rapidly diminish as soon as ESC's differentiate (at protein levels). Expressed in almost all epithelial cell membranes but not on mesodermal or neural cell membranes. Found on the surface of adenocarcinoma.

Validation Data

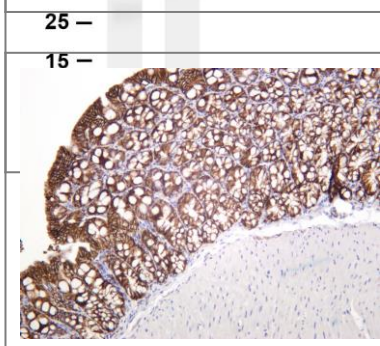
Rat colon was stained with anti-EpCAM (ANT0090R) rabbit antibody



Various whole cell lysates were separated by 4-20% SDS-PAGE, and the membrane was blotted with anti-EpCAM (ANT0090R) antibody. The HRPconjugated Goat anti-Rabbit IgG(H + L) antibody was used to detect the antibody. Lane 1: HCT-116 Lane 2: MCF7
Predicted band size: 35kDa Observed band size: 40kDa



Human liver was stained with anti-EpCAM (ANT0090R) rabbit antibody



Mouse colon was stained with anti-EpCAM (ANT0090R) rabbit antibody

For Research use only, not for diagnostics and clinical use
Contact Antagene Inc Tel 1-866-964-2589 Email: info@antageneinc.com