



Iba1 (ANT0088R) Rabbit mAb

CatalogNo: ANT8165 **Recombinant** 

Formulation: PBS,50%glycerol,0.05%Proclin 300,0.05%BSA
Quantity : 100 ug/vial

Host Species

- Rabbit
- Human,Mouse,Rat,

Reactivity

- WB,IHC,IF,IP,ELISA

Applications

MW

- 16kD (Calculated)
- 16kD (Observed)

Isotype

- IgG,Kappa

Recommended Dilution Ratios

IHC 1:2000-1:4000

WB 1:1000-1:5000

IF 1:200-1:1000

ELISA 1:5000-1:20000

IP 1:50-1:200,

Storage

Storage* -15°C to -25°C/1 year(Do not lower than -25°C)

Basic Information

Clonality Monoclonal

Clone Number ANT0088R

Immunogen Information

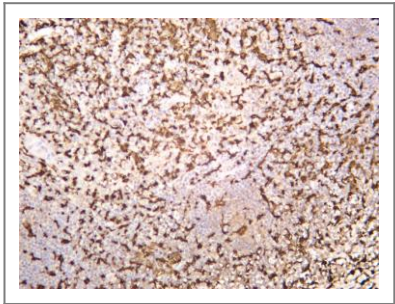
Sequence Allograft inflammatory factor 1 (AIF-1) (Ionized calcium-binding adapter molecule 1) (Protein G1)

Specificity Endogenous

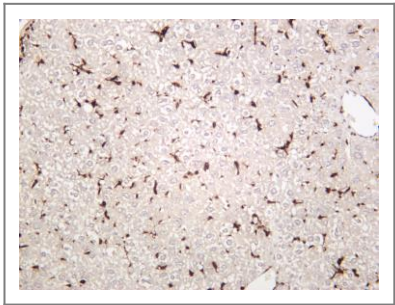
Target Information

Protein Name	AIF1 G1 IBA1		
	Organism	Gene ID	UniProt ID
	Human	199 ;	P55008 ;
	Mouse	11629 ;	O70200 ;
	Rat	29427 ;	P55009 ;
Cellular Localization	Cytoplasm		
Tissue specificity	Detected in T-lymphocytes and peripheral blood mononuclear cells.		
Function	Function:May play a role in macrophage activation and function.,ANTM:Phosphorylated on serine residues.,similarity:Contains 2 EF-hand domains.,		

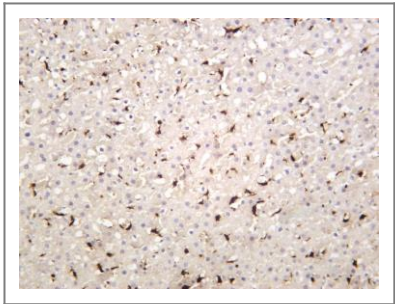
Validation Data



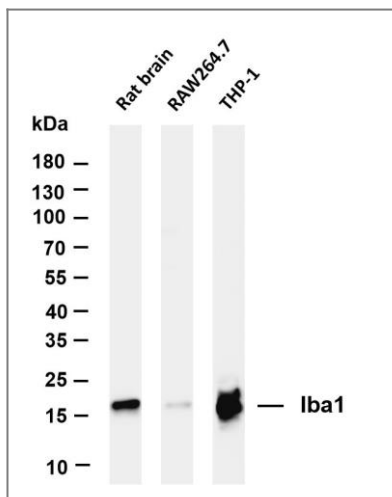
Human tonsil was stained with anti-Iba1 (ANT0088R) rabbit antibody



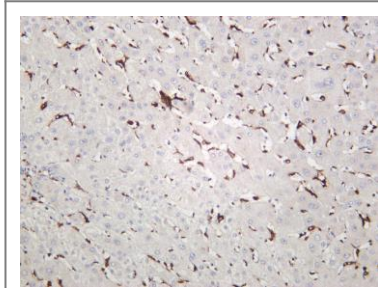
Mouse liver was stained with anti-Iba1 (ANT0088R) rabbit antibody



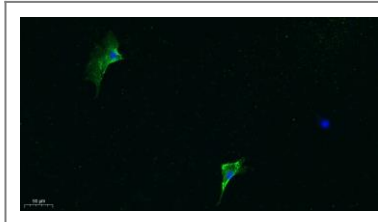
Rat liver was stained with anti-Iba1 (ANT0088R) rabbit antibody



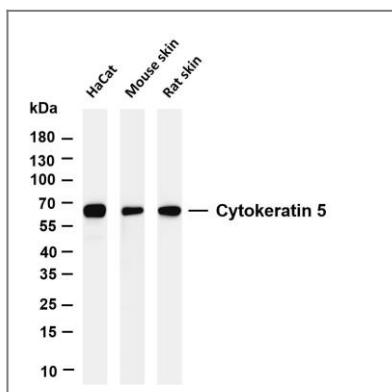
Various whole cell lysates were separated by 4-20% SDS-PAGE, and the membrane was blotted with anti-Iba1 (ANT0088R) antibody. The HRPconjugated Goat anti-Rabbit IgG(H + L) antibody was used to detect the antibody. Lane 1: Rat brain Lane 2: RAW264.7 Lane 3: THP-1 Predicted band size: 16kDa Observed band size: 16kDa



Human liver was stained with anti-Iba1 (ANT0088R) rabbit antibody



Immunofluorescence analysis of A549. 1,primary Antibody was diluted at 1:200(4°C overnight). 2, Goat Anti Rabbit IgG (H&L) - Alexa Fluor 488 Secondary antibody was diluted at 1:1000(room temperature, 50min).3, Picture B: DAPI(blue) 10min.



Various whole cell lysates were separated by 4-20% SDS-PAGE, and the membrane was blotted with anti-Iba1 (ANT0088R) antibody. The HRPconjugated Goat anti-Rabbit IgG(H + L) antibody was used to detect the antibody. Lane 1: Mouse spleen Lane 2: THP-1 Lane 3: Rat testis Predicted band size: 16kDa Observed band size: 16kDa

For Research use only, not for diagnostics and clinical use
Contact Antagene Inc Tel 1-866-964-2589 Email: info@antageneinc.com