



Mouse Monoclonal Antibody **Iba1** conjugated to Sepharose Beads

CatalogNo: **ANT8165-S**

Size 200ul

Storage Store at 4 °C for frequent use

Description

This Antagene antibody is immobilized via covalent binding of primary amino groups to N-hydroxysuccinimide (NHS)-activated sepharose beads. It is useful for immunoprecipitation assays.

Iba1 (ANT0088R) Rabbit mAb

Formulation: 50% slurry in PBS pH 7.2 with 0.01mg NaN₃ preservative.

Host Species

- Rabbit
- Human, Mouse, Rat,

Reactivity

- WB, IHC, IF, IP, ELISA

Applications

MW

- 16kD (Calculated)
 - IgG, Kappa
- 16kD (Observed)

Isotype

Recommended Dilution Ratios

IP

Basic Information

Clonality	Monoclonal
Clone Number	ANT0088R

Immunogen Information

Sequence	Allograft inflammatory factor 1 (AIF-1) (Ionized calcium-binding adapter molecule 1) (Protein G1)
----------	---

Specificity Endogenous

Target Information

Protein Name AIF1 G1 IBA1

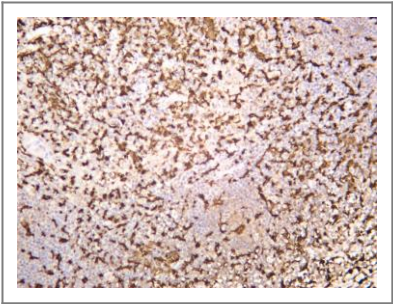
Organism	Gene ID	UniProt ID
Human	199;	P55008;
Mouse	11629;	O70200;
Rat	29427;	P55009;

Cellular Localization Cytoplasm

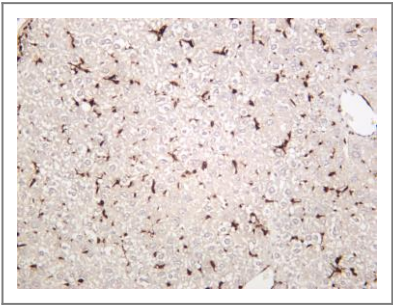
Tissue specificity Detected in T-lymphocytes and peripheral blood mononuclear cells.

Function Function:May play a role in macrophage activation and function.,ANTM:Phosphorylated on serine residues.,similarity:Contains 2 EF-hand domains.,

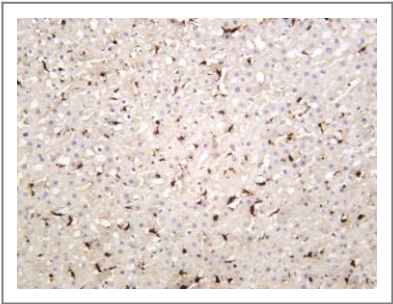
Validation Data



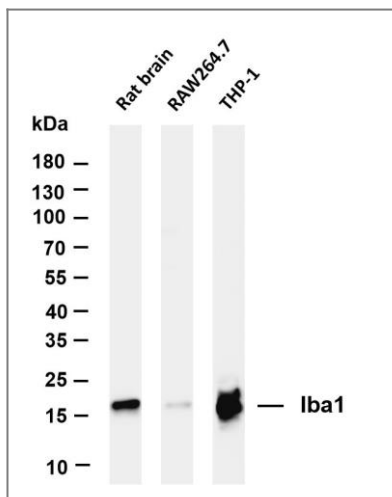
Human tonsil was stained with anti-Iba1 (ANT0088R) rabbit antibody



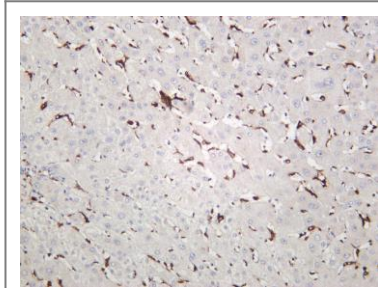
Mouse liver was stained with anti-Iba1 (ANT0088R) rabbit antibody



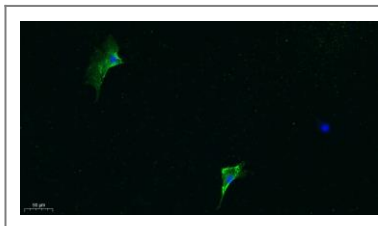
Rat liver was stained with anti-Iba1 (ANT0088R) rabbit antibody



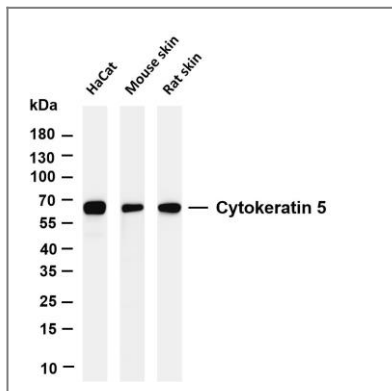
Various whole cell lysates were separated by 4-20% SDS-PAGE, and the membrane was blotted with anti-Iba1 (ANT0088R) antibody. The HRPconjugated Goat anti-Rabbit IgG(H + L) antibody was used to detect the antibody. Lane 1: Rat brain Lane 2: RAW264.7 Lane 3: THP-1 Predicted band size: 16kDa Observed band size: 16kDa



Human liver was stained with anti-Iba1 (ANT0088R) rabbit antibody



Immunofluorescence analysis of A549. 1,primary Antibody was diluted at 1:200(4°C overnight). 2, Goat Anti Rabbit IgG (H&L) - Alexa Fluor 488 Secondary antibody was diluted at 1:1000(room temperature, 50min).3, Picture B: DAPI(blue) 10min.



Various whole cell lysates were separated by 4-20% SDS-PAGE, and the membrane was blotted with anti-Iba1 (ANT0088R) antibody. The HRPconjugated Goat anti-Rabbit IgG(H + L) antibody was used to detect the antibody. Lane 1: Mouse spleen Lane 2: THP-1 Lane 3: Rat testis Predicted band size: 16kDa Observed band size: 16kDa

For Research use only, not for diagnostics and clinical use
Contact Antagene Inc Tel 1-866-964-2589 Email: info@antageneinc.com