



TOMM20 (ANT0087R) Rabbit mAb

CatalogNo: ANT8164 **Recombinant** 

Formulation: PBS,50%glycerol,0.05%Proclin 300,0.05%BSA
Quantity : 100 ug/vial

Host Species

- Rabbit
- Human,Mouse,Rat,

Reactivity

- WB,IHC,IF,IP,ELISA

Applications

MW

- 16kD (Calculated)
- 16kD (Observed)

Isotype

- IgG,Kappa

Recommended Dilution Ratios

IHC 1:100-1:500

WB 1:1000-1:5000

IF 1:200-1:1000

ELISA 1:5000-1:20000

IP 1:50-1:200,

Storage

Storage* -15°C to -25°C/1 year(Do not lower than -25°C)

Basic Information

Clonality Monoclonal

Clone Number ANT0087R

Target Information

Endogenous

Gene name

TOMM20

Protein Name

Mitochondrial import receptor subunit TOM20 homolog

Organism	Gene ID	UniProt ID
Human	9804;	Q15388;
Mouse	67952;	Q9DCC8;
Rat	266601;	Q62760;

Cellular Localization

Membranous

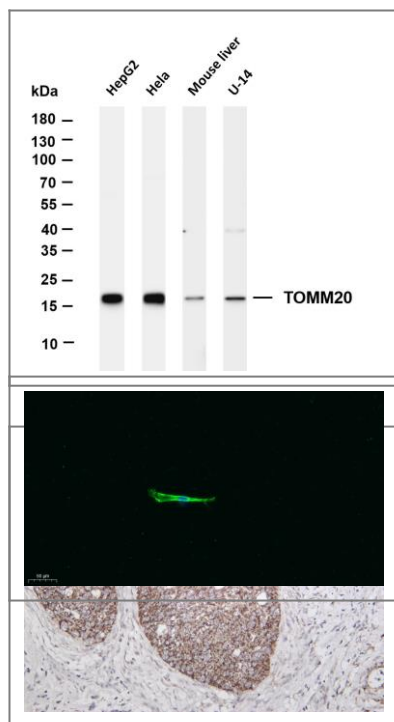
Tissue specificity

Bone marrow,Brain,Cervix,Epithelium,Eye,Fibroblast,Pancreas

Function

Function:Central component of the receptor complex responsible for the recognition and translocation of cytosolically synthesized mitochondrial preproteins. Together with tom22 functions as the transit peptide receptor at the surface of the mitochondrion outer membrane and facilitates the movement of preproteins into the tom40 translocation pore.,similarity:Belongs to the Tom20 family.,subunit:Forms part of the preprotein translocase complex of the outer mitochondrial membrane (TOM complex) which consists of at least 7 different proteins (TOMM5, TOMM6, TOMM7, TOMM20, TOMM22, TOMM40 and TOMM70). Interacts with TOM22.,

Validation Data



Various whole cell lysates were separated by 4-20% SDS-PAGE, and the membrane was blotted with anti-TOMM20 (ANT0087R) antibody. The HRPconjugated Goat anti-Rabbit IgG(H + L) antibody was used to detect the antibody. Lane 1: HepG2 Lane 2: HeLa Lane 3: Mouse liver Lane 4: U-14
 Predicted band size: 16kDa Observed band size: 16kDa

Human cervical carcinoma was stained with Anti-TOMM20 (ANT0087R) rabbit antibody
 Immunofluorescence analysis of A549. 1,primary Antibody was diluted at 1:200(4°C overnight). 2, Goat Anti Rabbit IgG (H&L) - Alexa Fluor 488 Secondary antibody was diluted at 1:1000(room temperature, 50min).3, Picture B: DAPI(blue) 10min.

For Research use only, not for diagnostics and clinical use
Contact Antagene Inc Tel 1-866-964-2589 Email: info@antageneinc.com