



Mouse Monoclonal Antibody **TOMM20** conjugated to Sepharose Beads

CatalogNo: **ANT8164-M**

Size 200ul

Storage Store at 4 °C for frequent use

Description

This Antagene antibody is immobilized by the covalent reaction of hydrazinonicotinamide-modified antibody with formylbenzamide-modified beads. It is useful for immunoprecipitation.

TOMM20 (ANT0087R) Rabbit mAb

Formulation: Each vial contains 1mg/ml Magnetic Bead in PBS, pH 7.2, 0.05mg ANa3.

Host Species

- Rabbit
- Human, Mouse, Rat,

Reactivity

- WB, IHC, IF, IP, ELISA

Applications

MW

- 16kD (Calculated)
- IgG, Kappa
- 16kD (Observed)

Isotype

Recommended Dilution Ratios

Basic Information

Clonality	Monoclonal
Clone Number	ANT0087R

Immunogen Information

Specificity Endogenous

Gene name TOMM20
Protein Name Mitochondrial import receptor subunit TOM20 homolog

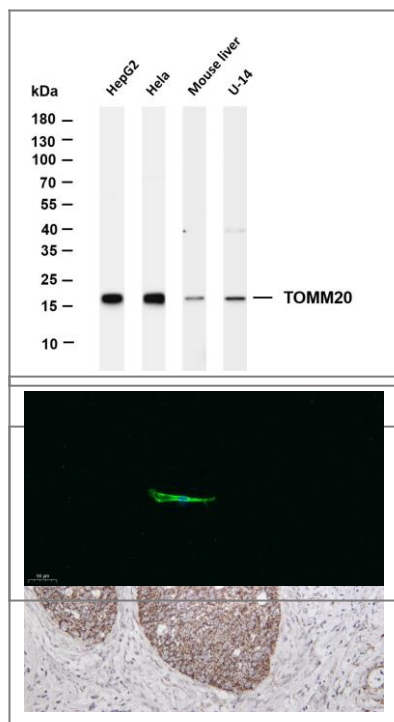
Organism	Gene ID	UniProt ID
Human	9804;	Q15388;
Mouse	67952;	Q9DCC8;
Rat	266601;	Q62760;

Cellular Localization Membranous

Tissue specificity Bone marrow,Brain,Cervix,Epithelium,Eye,Fibroblast,Pancreas

Function:Central component of the receptor complex responsible for the recognition and translocation of cytosolically synthesized mitochondrial preproteins. Together with tom22 functions as the transit peptide receptor at the surface of the mitochondrion outer membrane and facilitates the movement of preproteins into the tom40 translocation pore.,similarity:Belongs to the Tom20 family.,subunit:Forms part of the preprotein translocase complex of the outer mitochondrial membrane (TOM complex) which consists of at least 7 different proteins (TOMM5, TOMM6, TOMM7, TOMM20, TOMM22, TOMM40 and TOMM70). Interacts with TOM22.,

Validation Data



Various whole cell lysates were separated by 4-20% SDS-PAGE, and the membrane was blotted with anti-TOMM20 (ANT0087R) antibody. The HRPconjugated Goat anti-Rabbit IgG(H + L) antibody was used to detect the antibody. Lane 1: HepG2 Lane 2: HeLa Lane 3: Mouse liver Lane 4: U-14
Predicted band size: 16kDa Observed band size: 16kDa

Human cervical carcinoma was stained with Anti-TOMM20 (ANT0087R) rabbit antibody
Immunofluorescence analysis of A549. 1,primary Antibody was diluted at 1:200(4°C overnight). 2, Goat Anti Rabbit IgG (H&L) - Alexa Fluor 488 Secondary antibody was diluted at 1:1000(room temperature, 50min).3, Picture B: DAPI(blue) 10min.

For Research use only, not for diagnostics and clinical use
Contact Antagene Inc Tel 1-866-964-2589 Email: info@antageneinc.com