

SIRT3 (ANT0050R) Rabbit mAb

CatalogNo: ANT8158 **Recombinant** 

Formulation: PBS,50%glycerol,0.05%Proclin 300,0.05%BSA
Quantity : 100 ug/vial

Host Species

- Rabbit
- Human,Mouse,Rat,

Reactivity

- WB,IHC,IF,IP,ELISA

Applications

MW

- 44kD (Calculated)
- 28kD (Observed)

Isotype

- IgG,Kappa

Recommended Dilution Ratios

IHC 1:200-1:1000

WB 1:1000-1:5000

IF 1:200-1:1000

ELISA 1:5000-1:20000

IP 1:50-1:200,

Storage

Storage* -15°C to -25°C/1 year(Do not lower than -25°C)

Basic Information

Clonality Monoclonal

Clone Number ANT0050R

Target Information

Endogenous

Gene name SIRT3
Protein Name NAD-dependent protein deacetylase sirtuin-3 mitochondrial

Organism	Gene ID	UniProt ID
Human	23410 ;	Q9NTG7 ;
Mouse		Q8R104 ;

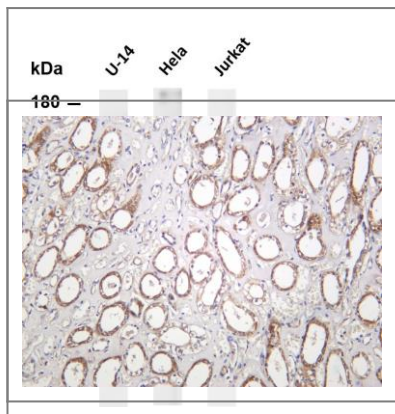
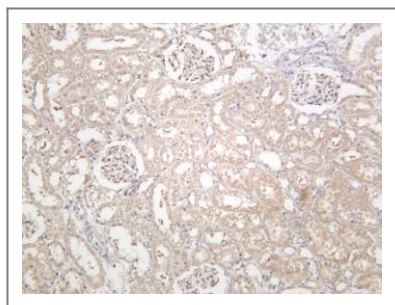
Cellular Mitochondrion matrix
Localization

Tissue specificity Widely expressed.

Function Catalytic activity:NAD(+) + an acetylprotein = nicotinamide + O-acetyl-ADP-ribose + a protein.,cofactor:Binds 1 zinc ion per subunit.,Function:NAD-dependent deacetylase. Despite some ability to deacetylate histones in vitro, it is unlikely in vivo.,ANTM:Processed by mitochondrial processing peptidase (MPP) to give a 28 kDa product. Such processing is probably essential for its enzymatic activity.,similarity:Belongs to the sirtuin family.,similarity:Contains 1 deacetylase sirtuin-type domain.,tissue specificity:Widely expressed.,

Validation Data

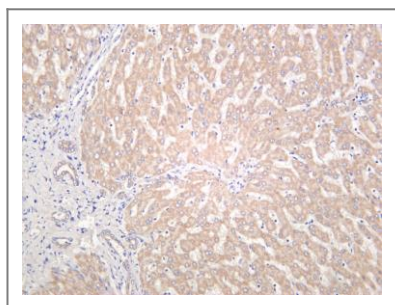
Rat liver was stained with anti-SIRT3 (ANT0050R) rabbit antibody



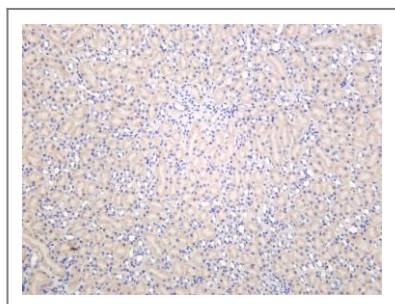
Various whole cell lysates were separated by 4-20% SDS-PAGE, and the membrane was blotted with anti-SIRT3 (ANT0050R) antibody. The HRPconjugated Goat anti-Rabbit IgG(H + L) antibody was used to detect the antibody. Lane 1: U-14 Lane 2: HeLa Lane 3: Jurkat
Predicted band size:

44kDa Observed band size: 28kDa

Human kidney was stained with anti-SIRT3 (ANT0050R) rabbit antibody



Human liver was stained with anti-SIRT3 (ANT0050R) rabbit antibody



Mouse liver was stained with anti-SIRT3 (ANT0050R) rabbit antibody

For Research use only, not for diagnostics and clinical use
Contact Antagene Inc Tel 1-866-964-2589 Email: info@antageneinc.com