



Mouse Monoclonal Antibody **Mucin 5AC** conjugated to Sepharose Beads

CatalogNo: **ANT8156-M**

Size 200ul

Storage Store at 4 °C for frequent use

Description

This Antagene antibody is immobilized by the covalent reaction of hydrazinonicotinamide-modified antibody with formylbenzamide-modified beads. It is useful for immunoprecipitation.

Mucin 5AC (ANT0048R) Rabbit mAb

Formulation: Each vial contains 1mg/ml Magnetic Bead in PBS, pH 7.2, 0.05mg ANaN3.

Host Species

- Rabbit

Reactivity

- Human,Mouse,Rat,

Applications

- WB,IHC,IF,IP,ELISA

MW

- 527kD (Calculated)
- 130-600kD (Observed)

Isotype

- IgG,Kappa

Recommended Dilution Ratios

IP

Basic Information

Clonality

Monoclonal

Clone Number ANT0048R

Immunogen Information

Specificity Endogenous

Gene name MUC5AC MUC5

Protein Name Mucin-5AC (MUC-5AC) (Gastric mucin) (Lewis B blood group antigen) (LeB) (Major airway glycoprotein) (Mucin-5 subtype AC, tracheobronchial) (Tracheobronchial mucin) (TBM) (Fragments)

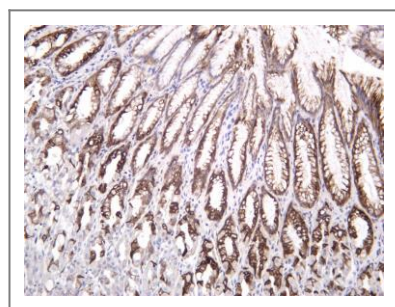
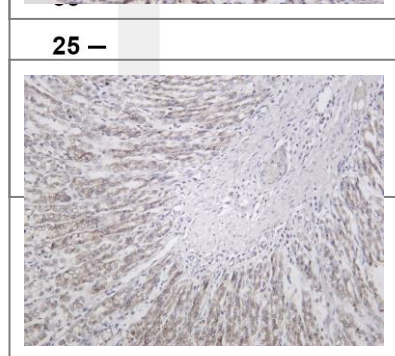
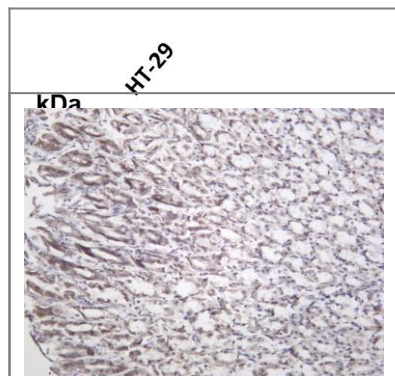
Organism	Gene ID	UniProt ID
Human		P98088 ;

Cellular Localization Cytoplasm

Tissue specificity Highly expressed in surface mucosal cells of respiratory tract and stomach epithelia. Overexpressed in a number of carcinomas. Also expressed in Barrett's esophagus epithelium and in the proximal duodenum.

Function Domain:The cysteine residues in the Cys-rich subdomain repeats are not involved in disulfide bonding.,Function:Gel-forming glycoprotein of gastric and respiratory tract epithelia that protects the mucosa from infection and chemical damage by binding to inhaled microorganisms and particulates that are subsequently removed by the mucociliary system.,ANTM:C-, O- and N-glycosylated. O-glycosylated on the Thr-/Ser-rich tandem repeats. C-mannosylation in the Cys-rich subdomains may be required for proper folding of these regions and for export from the endoplasmic reticulum during biosynthesis.,PTM:Proteolytic cleavage in the C-terminal is initiated early in the secretory pathway and does not involve a serine protease. The extent of cleavage is increased in the acidic parts of the secretory pathway. Cleavage generates a reactive group which could link the protein to a primary amide.,similarity:Contains 1 CTCK (C-terminal cystine knot-like) domain.,similarity:Contains 2 VWFC domains.,similarity:Contains 4 VWFD domains.,subunit:Multimeric. Interacts with H.pylori in the gastric epithelium, Barrett's esophagus as well as in gastric metaplasia of the duodenum (GMD).,tissue specificity:Highly expressed in surface mucosal cells of respiratory tract and stomach epithelia. Overexpressed in a number of carcinomas. Also expressed in Barrett's esophagus epithelium and in the proximal duodenum.,

Validation Data



Various whole cell lysates were separated by 4-20% SDS-PAGE, and the membrane was blotted with anti-Mucin 5AC (ANT0048R) antibody. The HRPconjugated Goat anti-Rabbit IgG(H + L) antibody was used to detect the antibody. Lane 1: HT-29 Predicted band size: 527kDa Observed band size: 130-600kDa

Mouse stomach was stained with Anti-Mucin 5AC (ANT0048R) rabbit antibody

Rat stomach was stained with Anti-Mucin 5AC (ANT0048R) rabbit antibody

Human stomach was stained with Anti-Mucin 5AC (ANT0048R) rabbit antibody

For Research use only, not for diagnostics and clinical use
Contact Antagene Inc Tel 1-866-964-2589 Email: info@antageneinc.com