



## Mouse Monoclonal Antibody **Aurora B** conjugated to Sepharose Beads

CatalogNo: **ANT8155-M**

Size 200ul

Storage Store at 4 °C for frequent use

### Description

This Antagene antibody is immobilized by the covalent reaction of hydrazinonicotinamide-modified antibody with formylbenzamide-modified beads. It is useful for immunoprecipitation.

### **Aurora B (ANT0046R) Rabbit mAb**

Formulation: Each vial contains 1mg/ml Magnetic Bead in PBS, pH 7.2, 0.05mg ANaN3.

#### Host Species

- Rabbit
- Human,
- WB,IHC,IF,IP,ELISA

#### Reactivity

#### Applications

#### MW

- 39kD (Calculated)
- IgG,Kappa
- 39kD (Observed)

#### Isotype

## Recommended Dilution Ratios

IP

### Basic Information

**Clonality** Monoclonal

**Clone Number** ANT0046R

### Immunogen Information

**Specificity** Endogenous

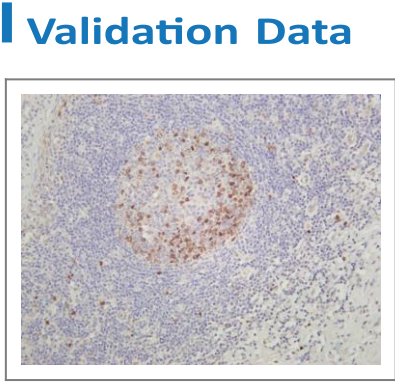
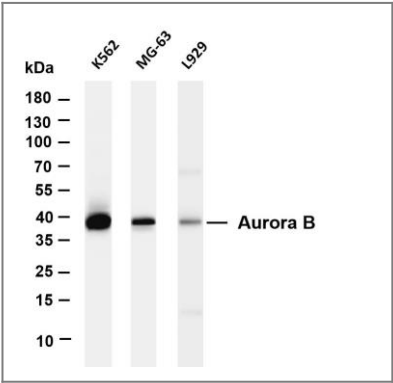
Gene name           AURKB  
Protein Name       Aurora kinase B,Aurora B

Organism	Gene ID	UniProt ID
Human	<a href="#">9212;</a>	<a href="#">Q96GD4;</a>
Mouse	<a href="#">20877;</a>	<a href="#">O70126;</a>
Rat	<a href="#">114592;</a>	<a href="#">O55099;</a>

Cellular           Nucleus  
Localization

Tissue specificity High level expression seen in the thymus. It is also expressed in the spleen, lung, testis, colon, placenta and fetal liver. Expressed during S and G2/M phase and expression is upregulated in cancer cells during M phase. ; [Isoform 3]: Not expressed in normal liver, high expression in metastatic liver.

Function           Catalytic activity:ATP + a protein = ADP + a phosphoprotein.,cofactor:Magnesium.,Disease:Disruptive regulation of expression is a possible mechanism of the perturbation of chromosomal integrity in cancer cells through its dominant-negative effect on cytokinesis.,Function:May be directly involved in regulating the cleavage of polar spindle microtubules and is a key regulator for the onset of cytokinesis during mitosis. Component of the chromosomal passenger complex (CPC), a complex that acts as a key regulator of mitosis. The CPC complex has essential functions at the centromere in ensuring correct chromosome alignment and segregation and is required for chromatin-induced microtubule stabilization and spindle assembly. Phosphorylates 'Ser-10' and 'Ser-28' of histone H3 during mitosis.,similarity:Belongs to the protein kinase superfamily. Ser/Thr protein kinase family. Aurora subfamily.,similarity:Contains 1 protein kinase domain.,subcellular location:Localizes on chromosome arms and inner centromeres from prophase through metaphase and then transferring to the spindle midzone and midbody from anaphase through cytokinesis. Colocalized with gamma tubulin in the midbody.,subunit:Interacts with TACC1. Associates with RACGAP1 during M phase. Component of the CPC at least composed of BIRC5/survivin CDCA8/borealin, INCENP and AURKB/Aurora-B. Interacts with CDCA1 and NDC80. Interacts with EVI5.,tissue specificity:High level expression seen in the thymus. It is also expressed in the spleen, lung, testis, colon, placenta and fetal liver. Expressed during S and G2/M phase and expression is up-regulated in cancer cells during M phase.,



Human tonsil was stained with anti-Aurora B (ANT0046R) rabbit antibody Various whole cell lysates were separated by 4-20% SDS-PAGE, and the membrane was blotted with anti-Aurora B (ANT0046R) antibody. The HRPconjugated Goat anti-Rabbit IgG(H + L) antibody was used to detect the antibody. Lane 1: K562 Lane 2: MG-63 Lane 3: L929 Predicted band size:

39kDa Observed band size: 39kDa

---

For Research use only, not for diagnostics and clinical use  
Contact Antagene Inc Tel 1-866-964-2589 Email: [info@antageneinc.com](mailto:info@antageneinc.com)