

## FAK (ANT0045R) Rabbit mAb

CatalogNo: ANT8154 **Recombinant** 

Formulation: PBS,50%glycerol,0.05%Proclin 300,0.05%BSA  
Quantity : 100 ug/vial

### Host Species

- Rabbit

### MW

- 119kD (Calculated)
- 119kD (Observed)

### Reactivity

- Human,Mouse,Rat,

### Isotype

- IgG,Kappa

### Applications

- WB,IHC,IF,IP,ELISA

## Recommended Dilution Ratios

IHC 1:400-1:1000

WB 1:1000-1:5000

IF 1:200-1:1000

ELISA 1:5000-1:20000

IP 1:50-1:200,

## Storage

**Storage\*** -15°C to -25°C/1 year(Do not lower than -25°C)

## Basic Information

**Clonality** Monoclonal

**Clone Number** ANT0045R

## Target Information

Endogenous

Gene name ANTK2

Protein Name Focal adhesion kinase 1

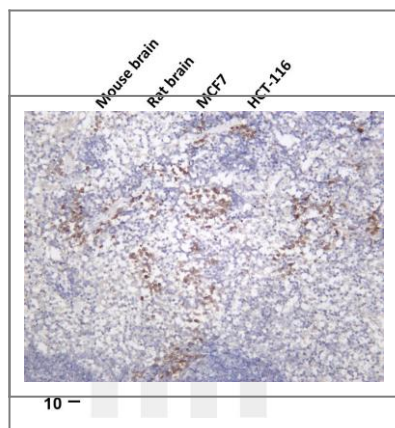
Organism	Gene ID	UniProt ID
Human	<a href="#">5747;</a>	<a href="#">Q05397;</a>
Mouse	<a href="#">14083;</a>	<a href="#">P34152;</a>
Rat	<a href="#">25614;</a>	<a href="#">Q35346;</a>

Cellular Localization Cytoplasm

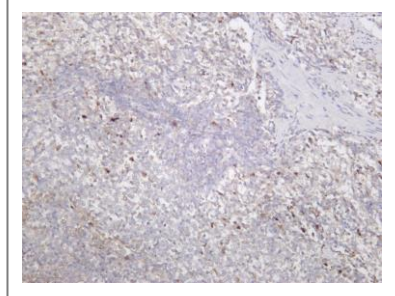
Tissue specificity Detected in B and T-lymphocytes. Isoform 1 and isoform 6 are detected in lung fibroblasts (at protein level). Ubiquitous. Expressed in epithelial cells (at protein level) (PubMed:31630787).

Function Catalytic activity:ATP + a [protein]-L-tyrosine = ADP + a [protein]-L-tyrosine phosphate.,Domain:The carboxy-terminal region is the site of focal adhesion targeting (FAT) sequence which mediates the localization of FAK1 to focal adhesions.,Domain:The first Prorich domain interacts with the SH3 domain of CRK-associated substrate (BCAR1) and CASL.,Function:Non-receptor protein-tyrosine kinase implicated in signaling pathways involved in cell motility, proliferation and apoptosis. Activated by tyrosine-phosphorylation in response to either integrin clustering induced by cell adhesion or antibody cross-linking, or via G-protein coupled receptor (GPCR) occupancy by ligands such as bombesin or lysophosphatidic acid, or via LDL receptor occupancy. Plays a potential role in oncogenic transformations resulting in increased kinase activity.,PTM:Phosphorylated on 6 tyrosine residues upon activation.,similarity:Belongs to the protein kinase superfamily. Tyr protein kinase family.,similarity:Belongs to the protein kinase superfamily. Tyr protein kinase family. FAK subfamily.,similarity:Contains 1 FERM domain.,similarity:Contains 1 protein kinase domain.,subcellular location:Constituent of focal adhesions.,subunit:Interacts with CAS family members and with GIT1, SORBS1 and BCAR3. Interacts with RGNEF and SHB (By similarity). Interacts with TGFB1I1.,tissue specificity:Expressed in all organs tested, in lymphoid cell lines, but most abundantly in brain.,

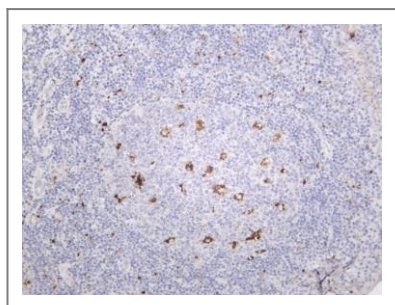
## Validation Data



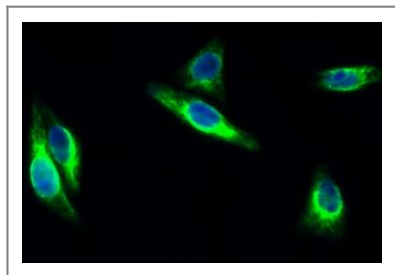
Various whole cell lysates were separated by 4-20% SDS-PAGE, and the membrane was blotted with anti-FAK (ANT0045R) antibody. The HRPconjugated Goat anti-Rabbit IgG(H + L) antibody was used to detect the antibody. Lane 1: Mouse brain Lane 2: Rat brain Lane 3: MCF7 Lane 4: HCT-116 Predicted band size: 119kDa Observed band size: 119kDa  
Mouse spleen was stained with Anti-FAK (ANT0045R) rabbit antibody



Rat spleen was stained with Anti-FAK (ANT0045R) rabbit antibody



Human tonsil was stained with Anti-FAK (ANT0045R) rabbit antibody



Immunofluorescence analysis of HeLa cell. 1,FAK Antibody(green) was diluted at 1:200(4° overnight). 2, Goat Anti Rabbit Alexa Fluor 488 Catalog:RS3211 was diluted at 1:1000(room temperature, 50min). 3 DAPI(blue) 10min.

For Research use only, not for diagnostics and clinical use  
Contact Antagene Inc Tel 1-866-964-2589 Email: [info@antageneinc.com](mailto:info@antageneinc.com)