



Mouse Monoclonal Antibody **Bcl-XL** conjugated to Sepharose Beads

CatalogNo: **ANT8153-S**

Size 200ul

Storage Store at 4 °C for frequent use

### Description

This Antagene antibody is immobilized via covalent binding of primary amino groups to N-hydroxysuccinimide (NHS)-activated sepharose beads. It is useful for immunoprecipitation assays.

**Bcl-XL (ANT0044R) Rabbit mAb**

Formulation: 50% slurry in PBS pH 7.2 with 0.01mg NaN<sub>3</sub> preservative.

### Host Species

- Rabbit
- Human, Mouse, Rat,

### Reactivity

- WB, IHC, IF, IP, ELISA

### Applications

### MW

- 26kD (Calculated)
- 30kD (Observed)
- IgG, Kappa

### Isotype

## Recommended Dilution Ratios

IP

### Basic Information

#### Clonality

Monoclonal

Clone Number      ANT0044R

Immunogen Information

Specificity      Endogenous

Gene name      BCL2L1

Protein Name      Bcl-2-like protein 1

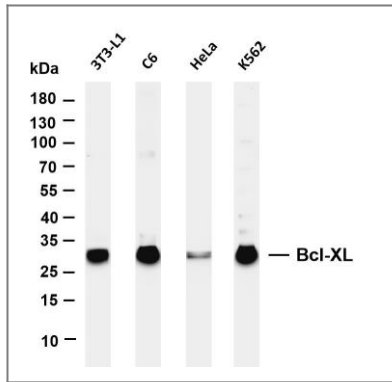
Organism	Gene ID	UniProt ID
Human	<a href="#">598;</a>	<a href="#">Q07817;</a>
Mouse	<a href="#">12048;</a>	<a href="#">Q64373;</a>
Rat	<a href="#">24888;</a>	<a href="#">P53563;</a>

Cellular Localization      Cytoplasm

**Tissue specificity** Bcl-X(S) is expressed at high levels in cells that undergo a high rate of turnover, such as developing lymphocytes. In contrast, Bcl-X(L) is found in tissues containing long-lived postmitotic cells, such as adult brain.

**Function** Domain:The BH4 motif is required for anti-apoptotic activity. The BH1 and BH2 motifs are required for both heterodimerization with other Bcl-2 family members and for repression of cell death.,Function:Potent inhibitor of cell death. Isoform Bcl-X(L) anti-apoptotic activity is inhibited by association with SIVA isoform 1. Inhibits activation of caspases (By similarity). Appears to regulate cell death by blocking the voltage-dependent anion channel (VDAC) by binding to it and preventing the release of the caspase activator, cytochrome c, from the mitochondrial membrane. The Bcl-X(S) isoform promotes apoptosis.,ANTM:Proteolytically cleaved by caspases during apoptosis. The cleaved protein, lacking the BH4 motif, has proapoptotic activity.,similarity:Belongs to the Bcl-2 family.,subcellular location:Mitochondrial membranes and perinuclear envelope.,subunit:Bcl-X(L) forms homodimers, and heterodimers with BAX, BAK and BCL2. Heterodimerization with BAX does not seem to be required for anti-apoptotic activity. Also interacts with BAD and BBC3. Isoform Bcl-X(L) binds to Siva isoform 1. Interacts with BCL2L11 (By similarity). Interacts with BECN1 and PGAM5. Isoform Bcl-X(L) interacts with BAX isoform Sigma.,tissue specificity:Bcl-X(S) is expressed at high levels in cells that undergo a high rate of turnover, such as developing lymphocytes. In contrast, Bcl-X(L) is found in tissues containing long-lived postmitotic cells, such as adult brain.,

## Validation Data



Various whole cell lysates were separated by 4-20% SDS-PAGE, and the membrane was blotted with anti-Bcl-XL (ANT0044R) antibody. The HRPconjugated Goat anti-Rabbit IgG(H + L) antibody was used to detect the antibody. Lane 1:3T3-L1 Lane 2: C6 Lane 3: HeLa Lane 4: K562 Predicted band size: 26kDa Observed band size: 30kDa

For Research use only, not for diagnostics and clinical use  
Contact Antagene Inc Tel 1-866-964-2589 Email: [info@antageneinc.com](mailto:info@antageneinc.com)