



## Mouse Monoclonal Antibody **Cyclin D1** conjugated to Sepharose Beads

CatalogNo: **ANT8149-S**

Size 200ul

Storage Store at 4 °C for frequent use

### Description

This Antagene antibody is immobilized via covalent binding of primary amino groups to N-hydroxysuccinimide (NHS)-activated sepharose beads. It is useful for immunoprecipitation assays.

### **Cyclin D1 (ANT0038R) Rabbit mAb**

Formulation: 50% slurry in PBS pH 7.2 with 0.01mg NaN<sub>3</sub> preservative.

#### Host Species

- Rabbit
- Human, Mouse, Rat,

#### Reactivity

- WB, IHC, IF, IP, ELISA

#### Applications

#### MW

- 34kD (Calculated)
  - IgG, Kappa
- 36kD (Observed)

#### Isotype

## **Recommended Dilution Ratios**

### **IP**

## **Basic Information**

#### Clonality

Monoclonal

Clone Number      ANT0038R

## Immunogen Information Specificity

Endogenous

**Gene name**      CCND1

**Protein Name**      G1/S-specific cyclin-D1

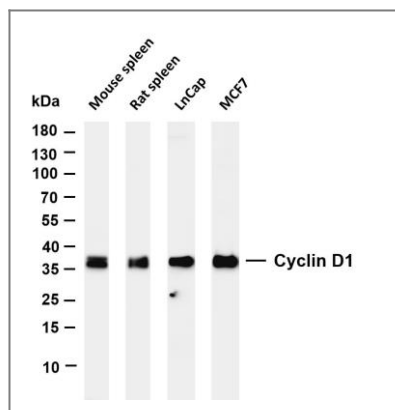
Organism	Gene ID	UniProt ID
Human	<a href="#">595;</a>	<a href="#">P24385;</a>
Mouse	<a href="#">12443;</a>	<a href="#">P25322;</a>
Rat	<a href="#">58919;</a>	<a href="#">P39948;</a>

**Cellular  
Localization**      Nucleus

**Tissue specificity** Brain,Placenta,Tongue,

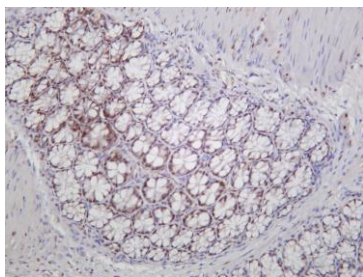
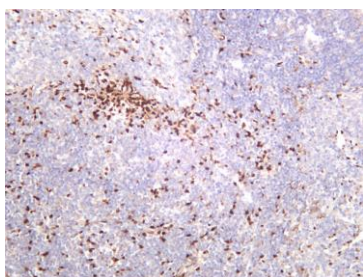
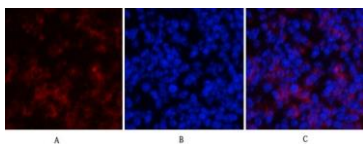
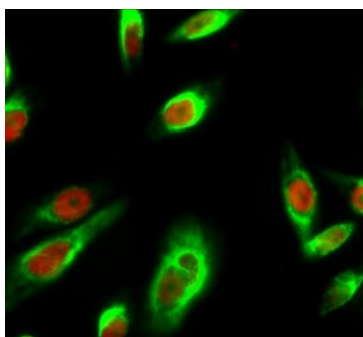
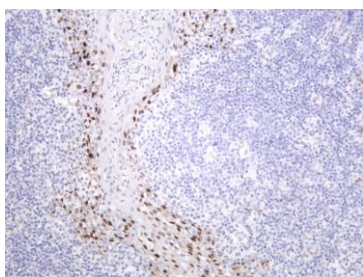
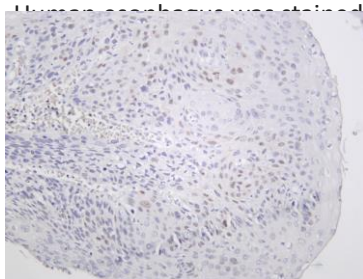
**Function**      Disease:A chromosomal aberration involving CCND1 may be a cause of B-lymphocytic malignancy, particularly mantle-cell lymphoma (MCL). Translocation t(11;14)(q13;q32) with immunoglobulin gene regions. Activation of CCND1 may be oncogenic by directly altering progression through the cell cycle.,Disease:A chromosomal aberration involving CCND1 may be a cause of multiple myeloma [MIM:254500]. Translocation t(11;14)(q13;q32) with the IgH locus.,Disease:A chromosomal aberration involving CCND1 may be a cause of parathyroid adenomas [MIM:168461]. Translocation t(11;11)(q13;p15) with the parathyroid hormone (ANTH) enhancer.,Function:Essential for the control of the cell cycle at the G1/S (start) transition.,online information:The Singapore human mutation and polymorphism database,PTM:Following DNA damage it is ubiquitinated by some SCF (SKP1-cullin-F-box) protein ligase complex containing FBXO31. Ubiquitination leads to its degradation and G1 arrest.,PTM:Phosphorylation at Thr-286 by MAP kinases is required for ubiquitination and degradation following DNA damage. It probably plays an essential role for recognition by the FBXO31 component of SCF (SKP1-cullin-F-box) protein ligase complex.,similarity:Belongs to the cyclin family.,similarity:Belongs to the cyclin family. Cyclin D subfamily.,subunit:Interacts with the CDK4 and CDK6 protein kinases to form a serine/threonine kinase holoenzyme complex. The cyclin subunit imparts substrate specificity to the complex.,

## Validation Data



Various whole cell lysates were separated by 4-20% SDS-PAGE, and the membrane was blotted with anti-Cyclin D1 (ANT0038R) antibody. The HRPconjugated Goat anti-Rabbit IgG(H + L) antibody was used to detect the antibody. Lane 1: Mouse spleen Lane 2: Rat spleen Lane 3: LnCap Lane 4: MCF7 Predicted band size: 34kDa Observed band size: 36kDa

Human esophagus stained with Anti-Cyclin D1 (ANT0038R) rabbit antibody

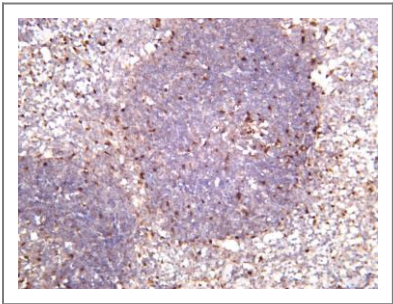


Human tonsil was stained with Anti-Cyclin D1 (ANT0038R) rabbit antibody

Immunofluorescence analysis of Hela cell. 1,Cyclin D1 Antibody(red) was diluted at 1:200(4° overnight). GAPDH Monoclonal Antibody(2B8)(green) was diluted at 1:200(4° overnight). 2, Goat Anti Rabbit Alexa Fluor 594 Catalog:RS3611 was diluted at 1:1000(room temperature, 50min). Goat Anti Mouse Alexa Fluor 488 Catalog:RS3208 was diluted at 1:1000(room temperature, 50min).

Immunofluorescence analysis of mouse-spleen tissue. 1,Cyclin D1 Antibody(red) was diluted at 1:200(4°C,overnight). 2, Cy3 labled Secondary antibody was diluted at 1:300(room temperature, 50min).3, Picture B: DAPI(blue) 10min. Picture A:Target. Picture B: DAPI. Picture C: merge of A+B

Rat spleen was stained with anti-Cyclin D1 (ANT0038R) rabbit antibody



Mouse colon was stained with anti-Cyclin D1 (ANT0038R) rabbit antibody  
spleen was stained with anti-Cyclin D1 (ANT0038R) rabbit antibody

Mouse

For Research use only, not for diagnostics and clinical use Contact Antagene Inc Tel 1-866-964-2589 Email:  
info@antageneinc.com