



## p21 (ANT0037R) Rabbit mAb

CatalogNo: ANT8148 **Recombinant** 

Formulation: PBS,50%glycerol,0.05%Proclin 300,0.05%BSA  
Quantity : 100 ug/vial

### Host Species

- Rabbit
- Human,Rat,
- WB,IHC,IF,IP,ELISA

### Reactivity

### Applications

### MW

- 18kD (Calculated)
- 18kD (Observed)

### Isotype

- IgG,Kappa

## Recommended Dilution Ratios

IHC 1:100-1:200

WB 1:1000-1:5000

IF 1:200-1:1000

ELISA 1:5000-1:20000

IP 1:50-1:200,

## Storage

**Storage\*** -15°C to -25°C/1 year(Do not lower than -25°C)

## Basic Information

**Clonality** Monoclonal

**Clone Number** ANT0037R

## Target Information

Endogenous

Gene name

CDKN1A CAP20 CDKN1 CIP1 MDA6 PIC1 SDI1 WAF1

Protein Name

p21

Organism	Gene ID	UniProt ID
Human	<a href="#">1026</a> ;	<a href="#">P38936</a> ;
Mouse	<a href="#">12575</a> ;	<a href="#">P39689</a> ;

Cellular

Nucleus

Localization

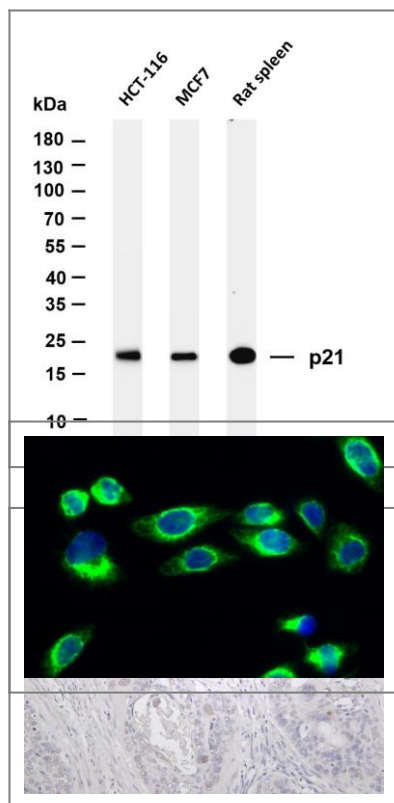
**Tissue specificity** Expressed in all adult tissues, with 5-fold lower levels observed in the brain.

Function

Function:May be the important intermediate by which p53 mediates its role as an inhibitor of cellular proliferation in response to DNA damage. Binds to and inhibits cyclin-dependent kinase activity, preventing phosphorylation of critical cyclin-dependent kinase substrates and blocking cell cycle progression.,induction:By p53, mezerein (antileukemic compound) and interferon beta.,ANTM:Phosphorylation of Thr-145 by Akt or of Ser-146 by PKC impairs binding to PCNA.,similarity:Belongs to the CDI family.,tissue specificity:Expressed in all adult human tissues, with 5-fold lower levels observed in the brain.,



## Validation Data



Various whole cell lysates were separated by 4-20% SDS-PAGE, and the membrane was blotted with anti-p21 (ANT0037R) antibody. The HRPconjugated Goat anti-Rabbit IgG(H + L) antibody was used to detect the antibody. Lane 1: HCT-116 Lane 2: MCF7 Lane 3: Rat spleen Predicted band size: 18kDa Observed band size: 18kDa

Human cervical carcinoma was stained with Anti-p21 (ANT0037R) rabbit antibody  
Immunofluorescence analysis of HeLa cell. 1, p21 Antibody(green) was diluted at 1:200(4° overnight). 2, Goat Anti Rabbit Alexa Fluor 488 Catalog:RS3211 was diluted at 1:1000(room temperature, 50min). 3 DAPI(blue) 10min.

For Research use only, not for diagnostics and clinical use  
Contact Antagene Inc Tel 1-866-964-2589 Email: [info@antageneinc.com](mailto:info@antageneinc.com)